

Statistical Comparison



The Ninety-Sixth Legislature
2021



FOREWORD

Each year the Legislative Research Council receives information requests for miscellaneous facts and figures regarding the Legislature and its committees. This document compiles some of those miscellaneous facts and figures for the Ninety-sixth Legislature and compares them with previous Legislatures.

If anyone has any suggestions on additional information that might be included in this document, please forward your comments to the Legislative Research Council.

Amanda Marsh, Anna Madsen, and Rachael Person of the Legislative Research Council staff compiled and organized the data for this document.

This document is also available on the LRC website:

https://sdlegislature.gov/Reference_Materials/stats.aspx



Table of Contents

2020 ELECTION RESULTS	1
Graph 1 Political Control of Senate 2001-2021	4
Graph 2 Political Control of House 2001-2021	5
Graph 3 Margins of Victory Legislative Campaigns	5
Graph 4 Margins of Victory Senate Campaigns	6
Graph 5 Margins of Victory House Campaigns	6
Table A Legislative Turnover	7
Table B Number of Terms Served by Incumbent Legislators Not Returning to the Legislature	7
Table C Political Control of S.D. Governorship & Legislature (1901-2021)	8
THE NINETY-SIXTH LEGISLATURE	11
AGE	13
Graph 6 Age of Legislators	13
Graph 7 Age of Senators	13
Graph 8 Age of Representatives	13
GENDER	14
Graph 9 Senators' Gender	14
Graph 10 Representatives' Gender	14
Table D Number of Women Legislators	14
EDUCATION	15
Graph 11 Education of Legislators (2021-2022)	15
Graph 12 Education of Legislators	15
Graph 13 Education of Senators	16
Graph 14 Education of Representatives	16
OCCUPATION	17
Graph 15 Occupational Makeup of Senate	17
Graph 16 Occupational Makeup of House of Representatives	17
TENURE	18
Graph 17 Legislator Tenure All Legislators	18
Table E Prior Legislative Service of Senate Members (In Years)	19
Graph 18 Legislator Tenure in Senate	19
Table F Prior Legislative Service of House Members (In Years)	20
Graph 19 Legislator Tenure in House of Representatives	20
PUBLIC SERVICE	21
Graph 20 Other Public Offices Held All Legislators	21

THE HOUSE OF REPRESENTATIVES	22
House of Representatives Leadership	22
THE SENATE	23
Senate Leadership	23
LEGISLATIVE COMMITTEES	25
Table G Total Number of Bills and Resolutions Referred to Committees for Years 2012 through 2021 Senate	28
Table H Total Number of Bills and Resolutions Referred to Committees for Years 2012 through 2021 House of Representatives	29
Graph 21 2021 Distribution of Bills to Senate Committees	30
Graph 22 2021 Senate Committee Workload Compared to Average Year	30
Graph 23 2021 Distribution of Bills to House Committees	31
Graph 24 2021 House Committee Workload Compared to Average Year	31
Table I Number of Standing Legislative Committees Each Session for Years 1891 through 2021	32
Graph 25 Senate Committees Number each Legislative Session	33
Graph 26 House of Representatives Committees Number each Legislative Session	33
DISPOSITION OF BILLS AND RESOLUTIONS	35
Table J Disposition of Senate Bills 2021	39
Graph 27 Disposition of Senate Bills 2021	39
Table K Disposition of House Bills 2021	40
Graph 28 Disposition of House Bills 2021	40
Graph 29 Disposition of Senate Bills 2011-2021	41
Graph 30 Disposition of House Bills 2011-2021	41
Table L Disposition of Senate Bills (1921-2021)	42
Table M Disposition of House Bills (1921-2021)	45
Graph 31 Disposition of Legislative Bills 2011-2021	48
Graph 32 Vetoes 1991-2021	48
Graph 33 Senate Joint Resolutions Introduced 1991-2021	49
Graph 34 House Joint Resolutions Introduced 1991-2021	49
Table N Disposition of all Legislative Bills for Years 1921 through 2021	50
Table O Bills Vetoed by the Governor for Years 1921 through 2021	52
Table P Disposition of Joint Resolutions (1921-2021)	54
Table Q Disposition of Concurrent Resolutions (1921-2021)	56
Graph 35 Senate Concurrent Resolutions Introduced 1991-2021	58
Graph 36 House Concurrent Resolutions Introduced 1991-2021	58
Graph 37 Senate Commemorations Adopted 1995-2021	59
Graph 38 House Commemorations Adopted 1995-2021	59

SPECIAL SESSIONS	61
Table R Disposition of Total Bills for All Special Sessions	63
Table S Disposition of Senate Bills for All Special Sessions	64
Table T Disposition of House Bills for All Special Sessions	65
Table U Disposition of Resolutions and Commemorations for All Special Sessions	66
GENERAL APPROPRIATIONS ACT	69
Graph 39 General Appropriations Act Funds Appropriated (FY 1998 -FY 2021)	71
Graph 40 General Appropriations Act Funds Appropriated (FY 2010-FY 2021)	71
Table V General Appropriations Act General Funds Appropriated (FY 1891- FY 1967)	72
Table W General Appropriations Act Funds Appropriated (FY 1968-FY 2019)	73

2020 ELECTION RESULTS





2020 ELECTION RESULTS

There were 25 general election contests for House seats and 25 general election contests for the Senate seats in 2020. There were also 19 primary election contests for the House and 10 primary election contests for the Senate. This compares to 34 House general election contests, 32 Senate general election contests, 13 House primary election contests, and 11 Senate primary election contests in 2018. Fifteen legislative districts had full Democratic and Republican slates for the House in the 2020 general election, 12 less than in 2018.

Of the 22 unfilled slates for the House, nine were missing one Democratic candidate and five were missing one Republican candidate. Nine House races were missing two Democratic candidates. Ten Senate races were unopposed – all with Republican candidates.

In the 2020 general election, the voters of the state elected 32 Republicans and three Democrats to the Senate, and 62 Republicans and eight Democrats to the House of Representatives. In comparison to the 2020 Legislature, the election resulted in a loss of two seats by the Democrats in the Senate and a loss of three seats by the Democrats in the House of Representatives. Table C reviews the political control of the governorship and the Legislature since 1901. Graphs 1 and 2 show the political control of the Senate and the House of Representatives since 1963.

Nine representatives were elected by five percent or less of the general election vote. No senators had a victory margin of less than five percent. Twenty-four senators were unopposed or had victory margins of more than 26 percent. Twenty-four representatives were also unopposed or had victory margins of more than 26 percent. The margins of victory for 2020 are compared with previous elections in Graphs 3 to 5. The election in 2020 resulted in a total of one senator and seven representatives being defeated for reelection. Among those defeated, Representative Brunner had 14 years of legislative service, Senator Wismer had ten years of legislative service, Representative McCleerey had 6 years of legislative service, and Representatives Post, Saba, and Sullivan had two years of legislative service. Representatives Wangsness and Hammock were seeking their first full terms after being appointed by the Governor in 2019.

Thirteen senators and 16 representatives did not run for their previous positions. Six senators and eight representatives were term limited. Of the term-limited group, three senators ran for the House

of Representatives and two were elected. Six term-limited representatives ran for the Senate, and three were elected.

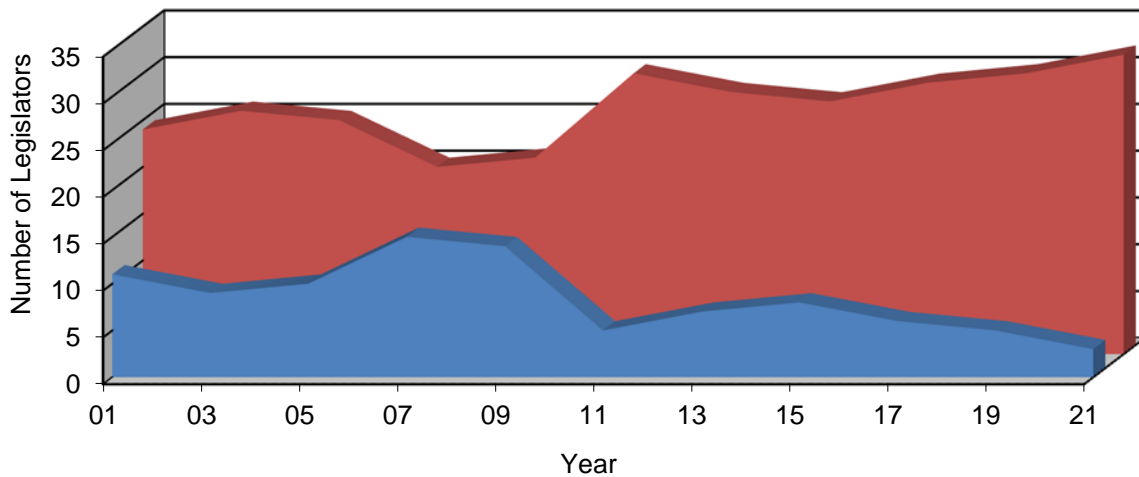
The result was a net loss of 27 legislators from the 2020 session for a legislative turnover rate of 26 percent. This data is compared with similar data from previous election years in Table A. Table B compares 2019 with other post-election years as to the amount of legislative experience lost from the previous legislative term.

Those who termed out of the Senate and did not seek reelection in the House were Senator Jim White, 10 years of legislative service; Senator Bob Ewing, eight years; and Senator Deb Soholt, eight years.

Those who termed out of the House and did not seek reelection in the Senate were Representative Tim Rounds, 16 years of legislative service; and Representative Ray Ring, eight years.

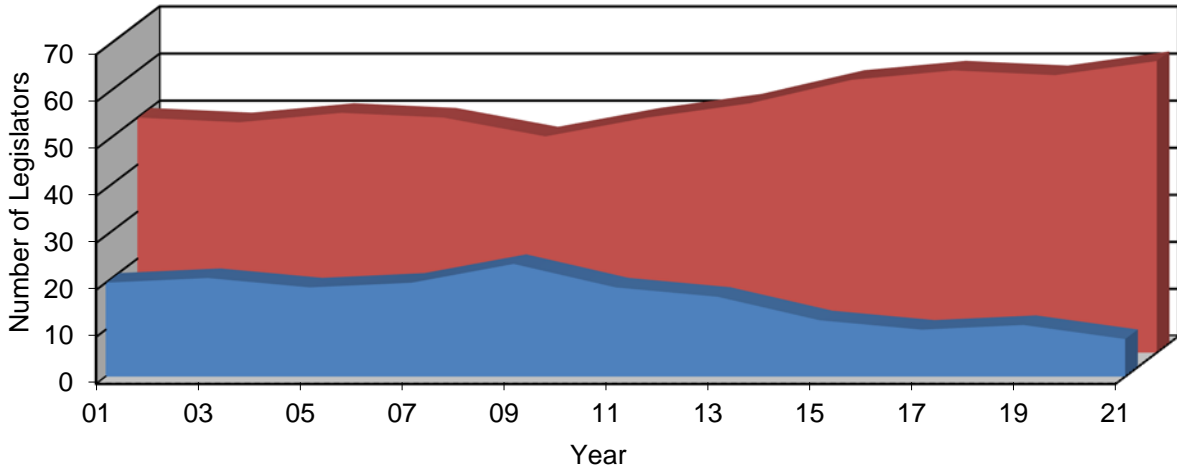
Graph 1
Political Control of Senate
2001-2021

■ Democrats ■ Republicans

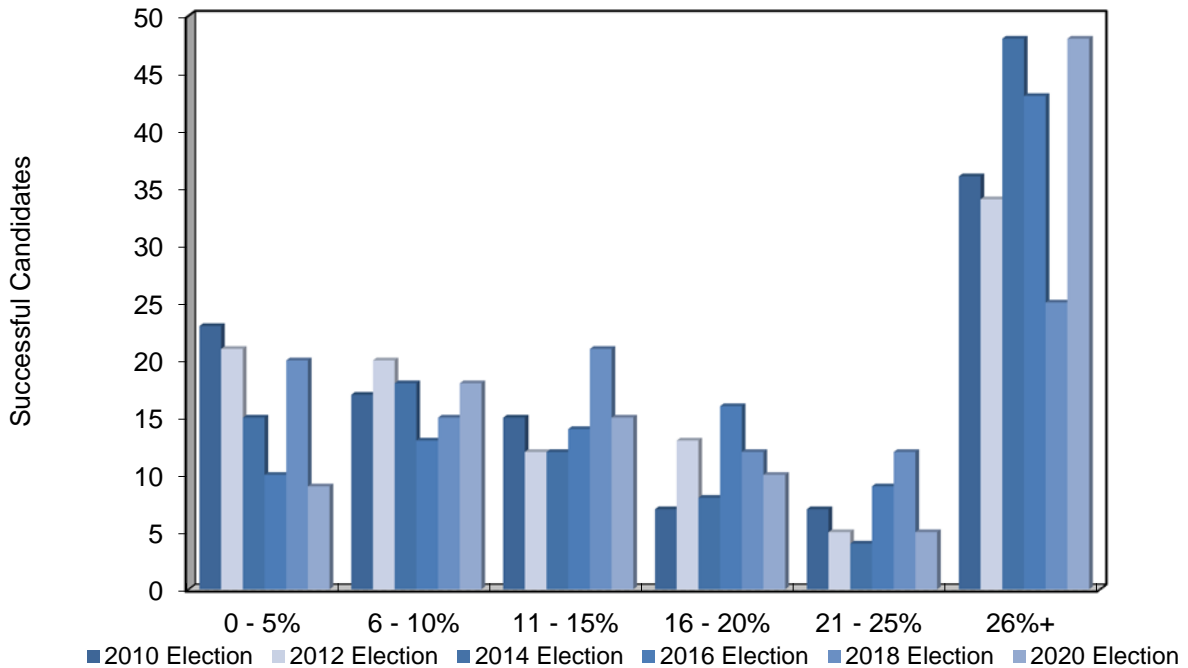


Graph 2
Political Control of House
2001-2021

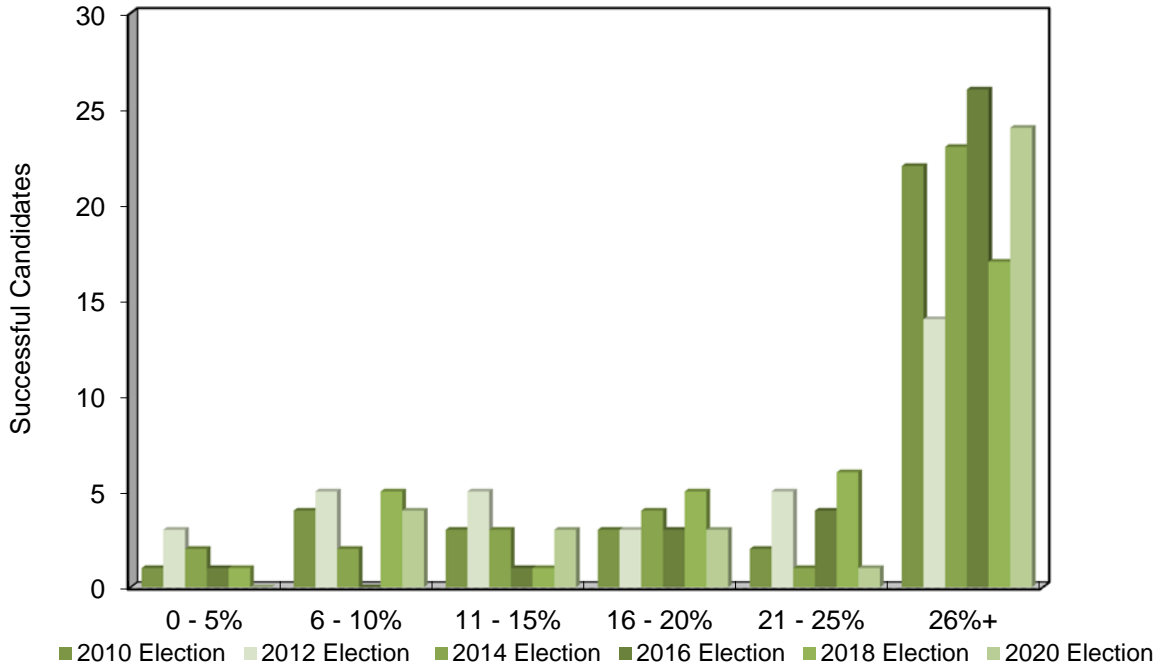
■ Democrats ■ Republicans



Graph 3
Margins of Victory
Legislative Campaigns



**Graph 4
Margins of Victory
Senate Campaigns**



**Graph 5
Margins of Victory
House Campaigns**

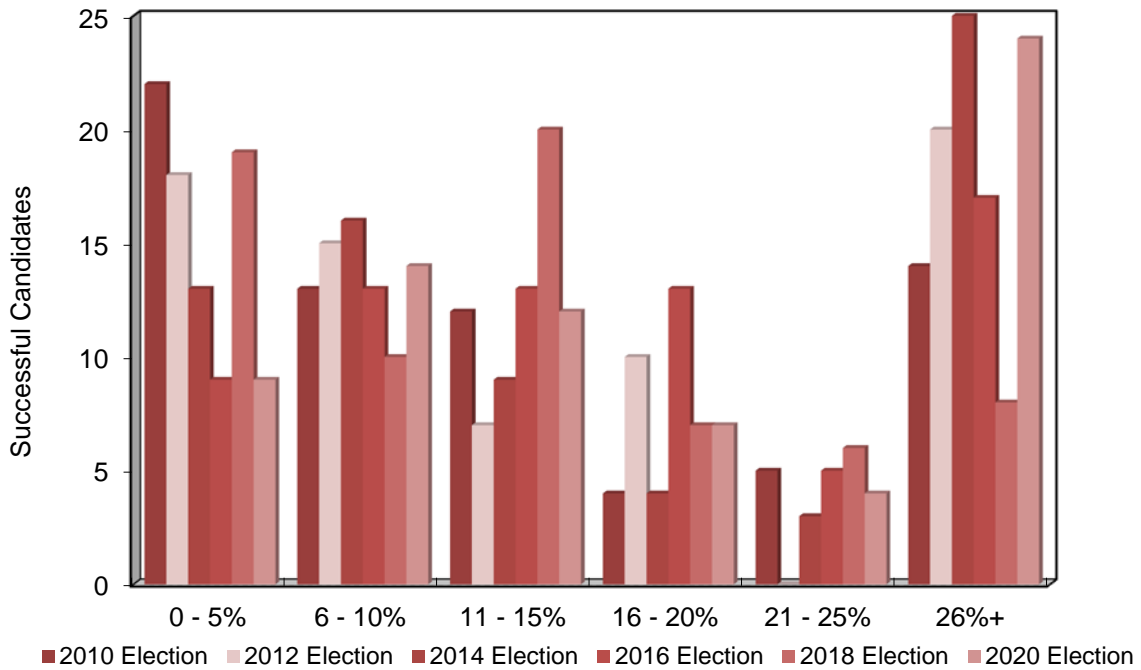


Table A
Legislative Turnover

Senate	2012	2014	2016	2018	2020
Number of senators not running for reelection	9	8	15	8	13
Average tenure in years of senators not running for reelection	10.1	9	9.5	8.75	7.9
Number of senators defeated in reelection bid	3	2	2	0	1
Average tenure in years of senators defeated in reelection bid	9.3	2	4	0	10
Total number of senators not returning	12	11	17	8	14
Average tenure of senators not returning	9.9	8.2	9	8.75	8.1
House					
Number of representatives not running for reelection	25	21	28	18	16
Average tenure in years of representatives not running for reelection	7.7	6.8	6.4	7.2	8.3
Number of representatives defeated in reelection bid	6	1	2	4	7
Average tenure in years of representatives defeated in reelection bid	3.2	2	12	4.5	4.4
Total number of representatives not returning	31	22	30	23	23
Average tenure of representatives not returning	6.8	6.4	6.8	7.2	7.1
Total Legislature					
Number of representatives elected to Senate	5	9	10	1	8
Number of senators elected to House	0	2	1	1	2
Total number of legislators not returning	38	22	36	31	27
Percent of legislative turnover	36%	21%	34%	30%	26%

Table B
Number of Terms Served by Incumbent Legislators
not Returning to the Legislature

Senate							
No. of Terms	2009	2011	2013	2015	2017	2019	2021
1	3	1	0	2	2	1	0
2	1	4	2	1	2	1	3
3	0	2	2	0	3	0	1
4	2	3	1	3	1	2	3
5	3	5	3	1	3	2	2
6	3	2	3	1	2	0	1
7	1	0	0	2	2	2	0
8	2	0	0	0	2	0	1
9	1	0	0	1	0	0	0
10	0	1	0	0	0	0	0
11	0	0	0	0	0	0	0
12	0	0	0	0	0	0	0
13	0	0	1	0	0	0	0
TOTAL	16	18	12	11	17	8	11

House							
No. of Terms	2009	2011	2013	2015	2017	2019	2021
1	4	8	9	6	6	4	5
2	7	2	7	3	6	1	2
3	9	6	3	3	1	8	1
4	10	8	5	6	12	4	4
5	1	1	2	0	2	3	1
6	0	0	1	1	1	1	0
7	0	0	0	2	1	0	0
8	1	0	1	0	0	2	2
9	1	1	1	0	0	0	0
10	0	0	1	1	1	0	0
11	0	0	1	0	0	0	0
12	0	1	0	0	0	0	0
13	0	0	0	0	0	0	0
14	0	0	0	0	0	0	0
15	0	0	0	0	0	0	0
TOTAL	34	27	31	22	30	23	15

Table C
Political Control of S.D. Governorship & Legislature
1901-2021

Year	Governor		Senate			House		
	Rep.	Dem.	Rep.	Dem.	Others	Rep.	Dem.	Others
1901	x		39	1	5	79	5	3
1903	x		41	3	1	76	6	5
1905	x		41	2	2	87	2	
1907	x		38	7		80	9	
1909	x		39	6		95	9	
1911	x		33	11	1	99	4	1
1913	x		33	11	1	88	14	1
1915	x		35	10		85	18	
1917	x		35	10		91	12	
1919	x		43	2		90	10	3
1921	x		44	1		94	4	5
1923	x		34	9	2	84	10	9
1925	x		34	10	1	85	11	7
1927		x	29	16		81	21	1
1929		x	33	12		83	20	
1931	x		31	14		79	24	
1933		x	16	29		33	70	
1935		x	14	31		40	63	
1937	x		22	23		66	37	
1939	x		30	5		62	13	

Governor			Senate			House		
Year	Rep.	Dem.	Rep.	Dem.	Others	Rep.	Dem.	Others
1941	x		31	4		65	10	
1943	x		31	4		69	6	
1945	x		35	0		72	3	
1947	x		35	0		71	4	
1949	x		27	8		64	11	
1951	x		29	6		66	9	
1953	x		35	0		73	2	
1955	x		29	6		57	18	
1957	x		18	17		48	27	
1959		x	15	20		43	32	
1961	x		23	12		57	18	
1963	x		26	9		58	17	
1965	x		18	16	1	45	30	
1967	x		29	6		64	11	
1969	x		27	8		59	16	
1971		x	24	11		46	29	
1973		x	17	18		35	35	
1975		x	16	19		37	33	
1977		x	24	11		48	22	
1979	x		24	11		48	22	
1981	x		25	10		49	21	
1983	x		26	9		54	16	
1985	x		25	10		57	13	
1987	x		24	11		48	22	
1988	x		25	10		48	22	
1989	x		20	15		46	24	
1991	x		18	17		45	25	
1993	x		15	20		42	28	
1995	x		19	16		46	24	
1997	x		22	13		48	22	
1999	x		22	13		51	19	
2001	x		24	11		50	20	
2003	x		26	9		49	21	
2005	x		25	10		51	19	
2007	x		20	15		50	20	
2009	x		21	14		46	24	
2011	x		30	5		50	19	1
2013	x		28	7		53	17	
2015	x		27	8		58	12	
2017	x		29	6		60	10	
2019	x		30	5		59	11	
2021	x		32	3		62	8	



THE NINETY-SIXTH LEGISLATURE



THE NINETY-SIXTH LEGISLATURE

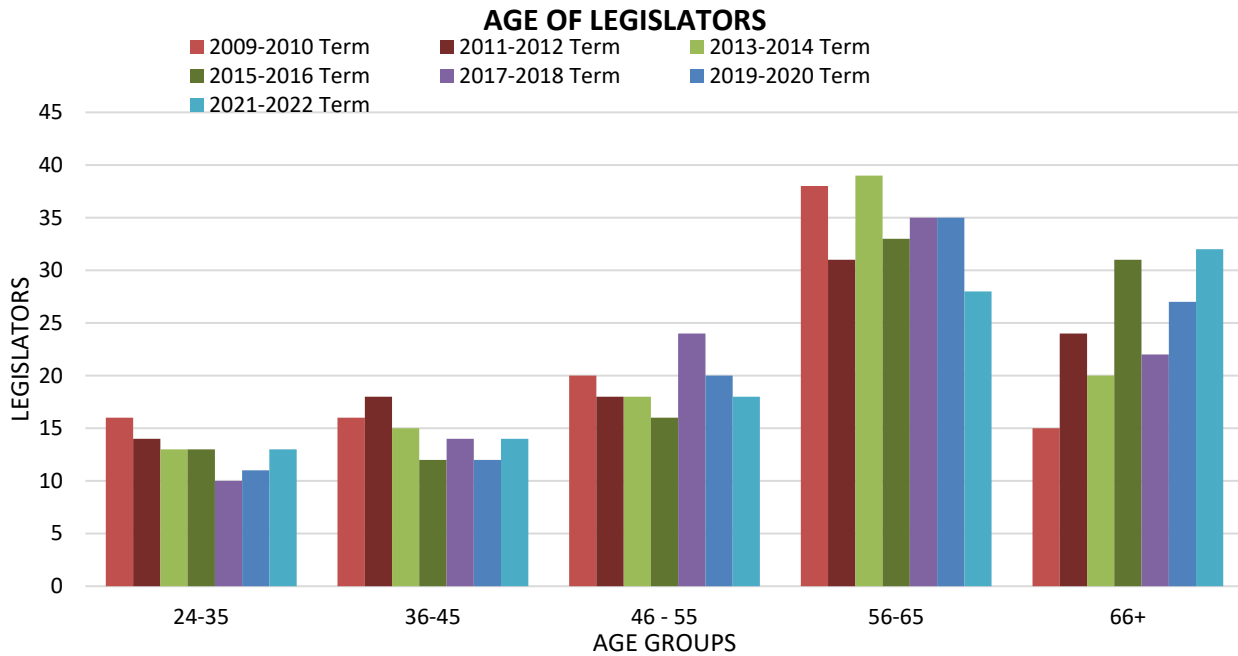
AGE

The age of legislators serving in the Ninety-Sixth Legislature was comparable to those legislators serving in the 2019-2020 legislative term. In 2021, 13 legislators (12%) were between twenty-four and thirty-five years of age; 14 legislators (13%) were thirty-six to forty-five; 18 legislators (17%) were forty-six to fifty-five; 28 legislators (27%) were fifty-six to sixty-five; and 32 legislators (31%) were sixty-six years of age or older.

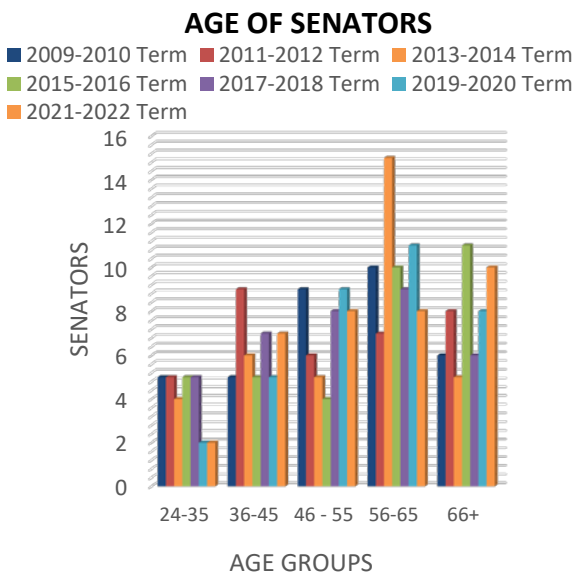
By comparison, 11 legislators of the Ninety-Fourth Legislature were between twenty-four and thirty-five years of age; 12 legislators were thirty-six to forty-five; 20 legislators were forty-six to fifty-five; 35 legislators were fifty-six to sixty-five; and 27 legislators were sixty-six years of age or older.

The Ninety-Sixth Legislature is compared to previous legislative terms in Graphs 6 to 8.

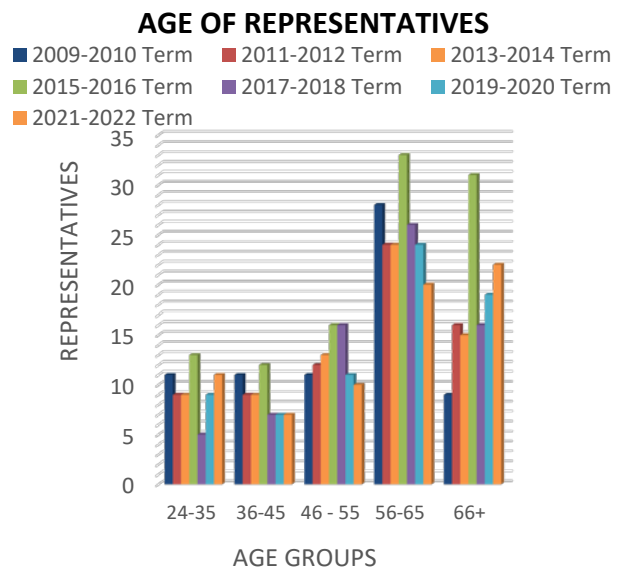
Graph 6



Graph 7



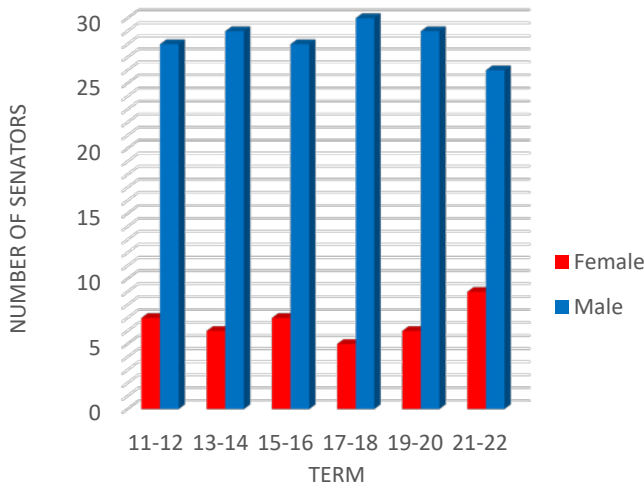
Graph 8



GENDER

Thirty women were elected to serve for the 2021-2022 legislative term, the most of any term of the Legislature. Twenty-one women were elected to the House and 9 women to the Senate, making up 28.6 percent of the total Legislature. Across the United States in 2021, 30.9 percent of state lawmakers were women. Table D shows the number of women that have served in the Legislature since 1923.

Graph 9
SENATORS' GENDER



Graph 10
REPRESENTATIVES' GENDER

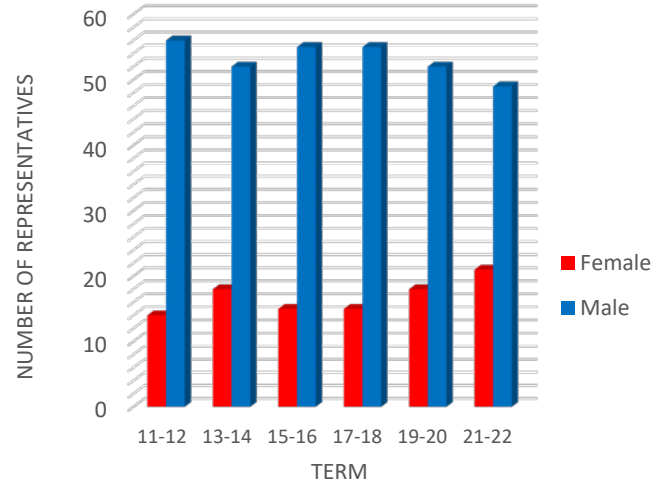


Table D
NUMBER OF WOMEN LEGISLATORS

Year	House	Senate
1923	1	0
1925	4	0
1927	1	0
1929	0	0
1931	0	0
1933	1	0
1935	0	0
1937	0	1
1939	1	0
1941	0	0
1943	0	0
1945	0	0
1947	0	0
1949	0	0
1951	1	0
1953	3	0
1955	2	0
1957	1	0
1959	2	0
1961	3	0
1963	2	0

Year	House	Senate
1964	2	0
1965	3	0
1967-68	2	0
1969-70	2	0
1971-72	3	0
1973-74	4	1
1975-76	7	5
1977-78	8	2
1979-80	6	3
1981-82	8	3
1983-84	12	3
1985-86	11	4
1987	16	5
1988	17	5
1989	13	8
1990	13	7
1991-92	15	11
1993-94	14	7
1995	14	5
1996	14	6
1997-98	13	5

Year	House	Senate
1999	9	5
2000	10	5
2001	11	5
2002	11	6
2003-04	13	4
2005-06	14	3
2007-08	13	5
2009	13	7
2010	14	7
2011-12	14	7
2013-14	18	6
2015-16	15	7
2017	15	5
2018	16	5
2019	19	6
2020	19	7
2021	21	9

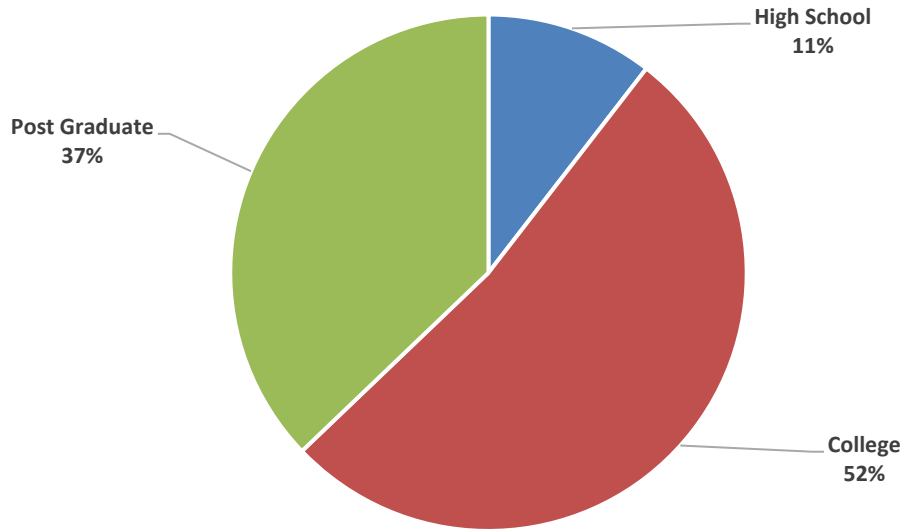
NOTE:

First woman legislator: Representative Gladys Pyle (Beadle) (1923)
First woman senator: Senator Jessie Sanders (Pennington) (1937)

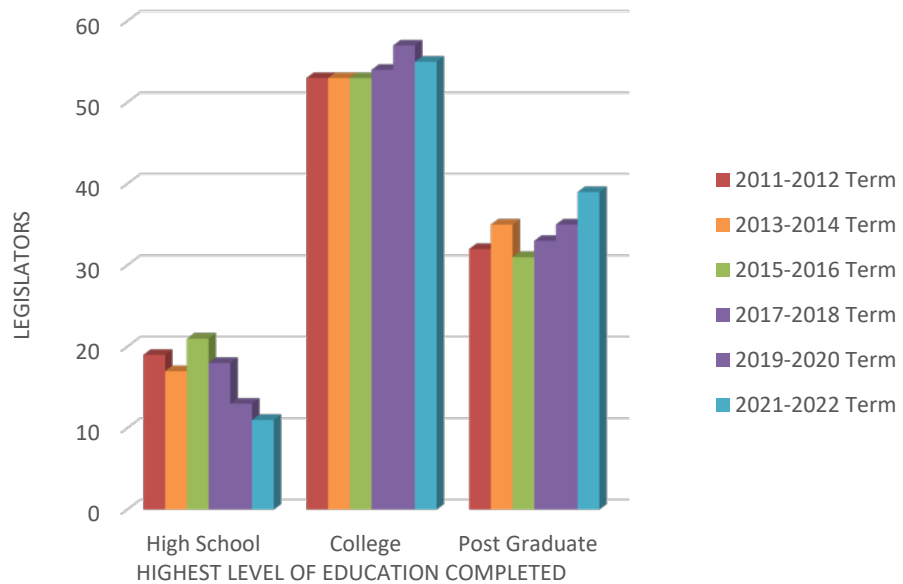
EDUCATION

The educational background of the Ninety-Sixth Legislature is displayed and compared to previous legislative terms in the following graphs.

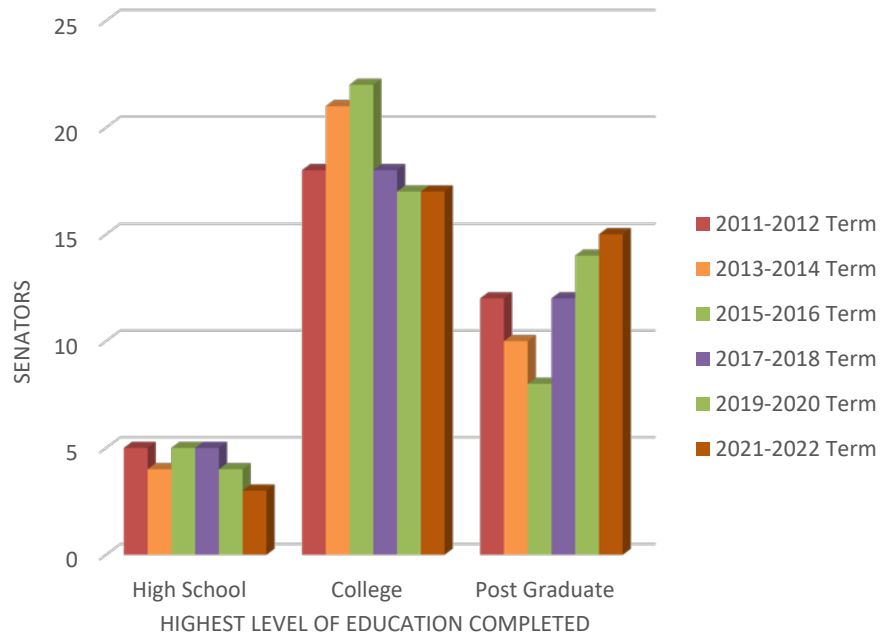
Graph 11
EDUCATION OF LEGISLATORS
2021-2022 TERM



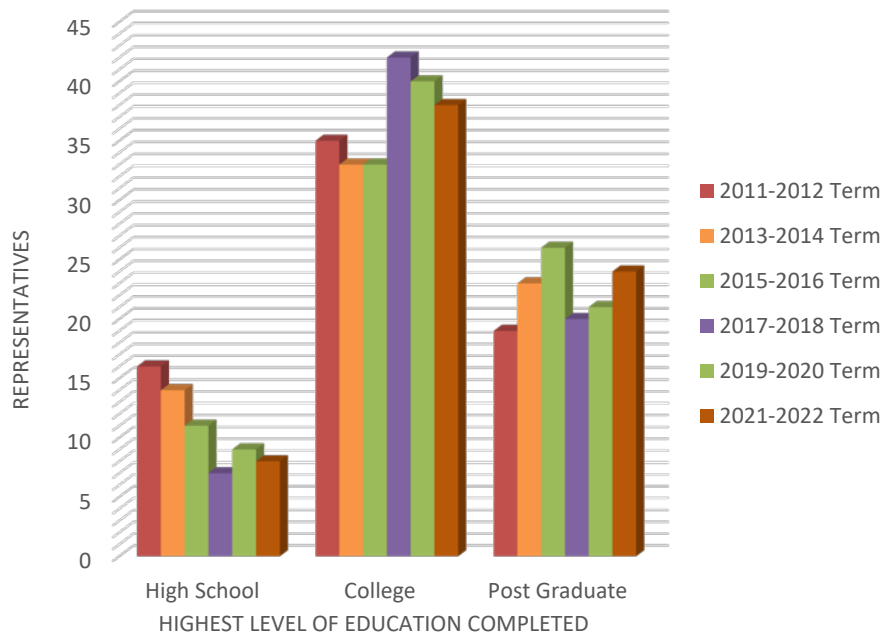
Graph 12
EDUCATION OF LEGISLATORS



Graph 13
EDUCATION OF SENATORS



Graph 14
EDUCATION OF REPRESENTATIVES

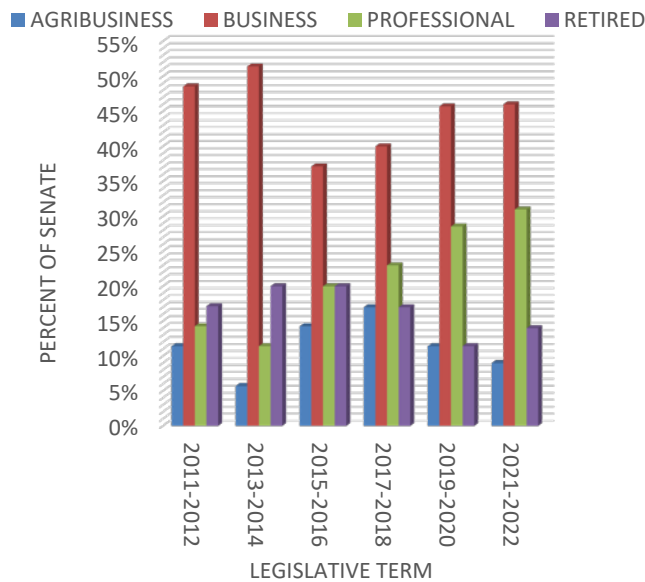


OCCUPATION

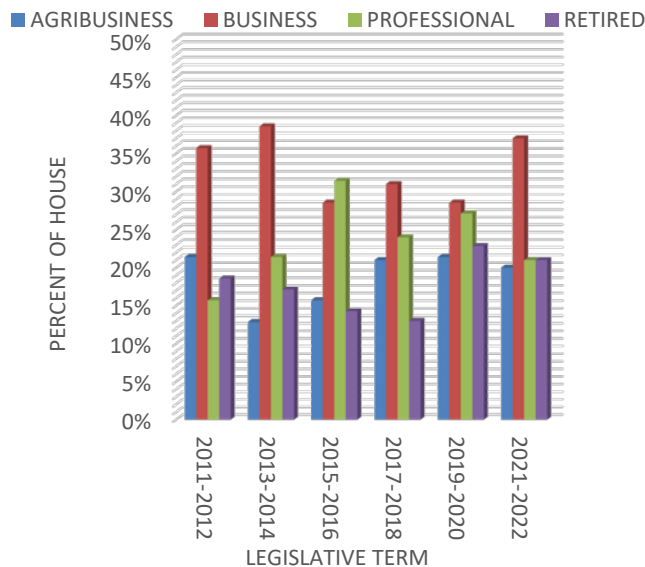
Three (9%) of the senators in the 2021 Senate were primarily engaged in farming, ranching, or another form of agribusiness. Sixteen (46%) of the senators were primarily engaged in business and 11 (31%) of the senators were engaged in professions. Five (14%) of the senators were retired or semi-retired from their occupations. This occupational data is compared with previous years in Graph 15.

Fourteen (20%) of the representatives in the 2021 House of Representatives were primarily engaged in farming, ranching, or another form of agribusiness. Twenty-six (37%) of the representatives were primarily engaged in business, and 15 (21%) of the representatives were engaged in professions. Fifteen (21%) of the House members were retired or semi-retired from their occupations. The occupational data is compared with previous years in Graph 16.

Graph 15
OCCUPATIONAL MAKEUP OF SENATE



Graph 16
OCCUPATIONAL MAKEUP OF HOUSE OF REPRESENTATIVES

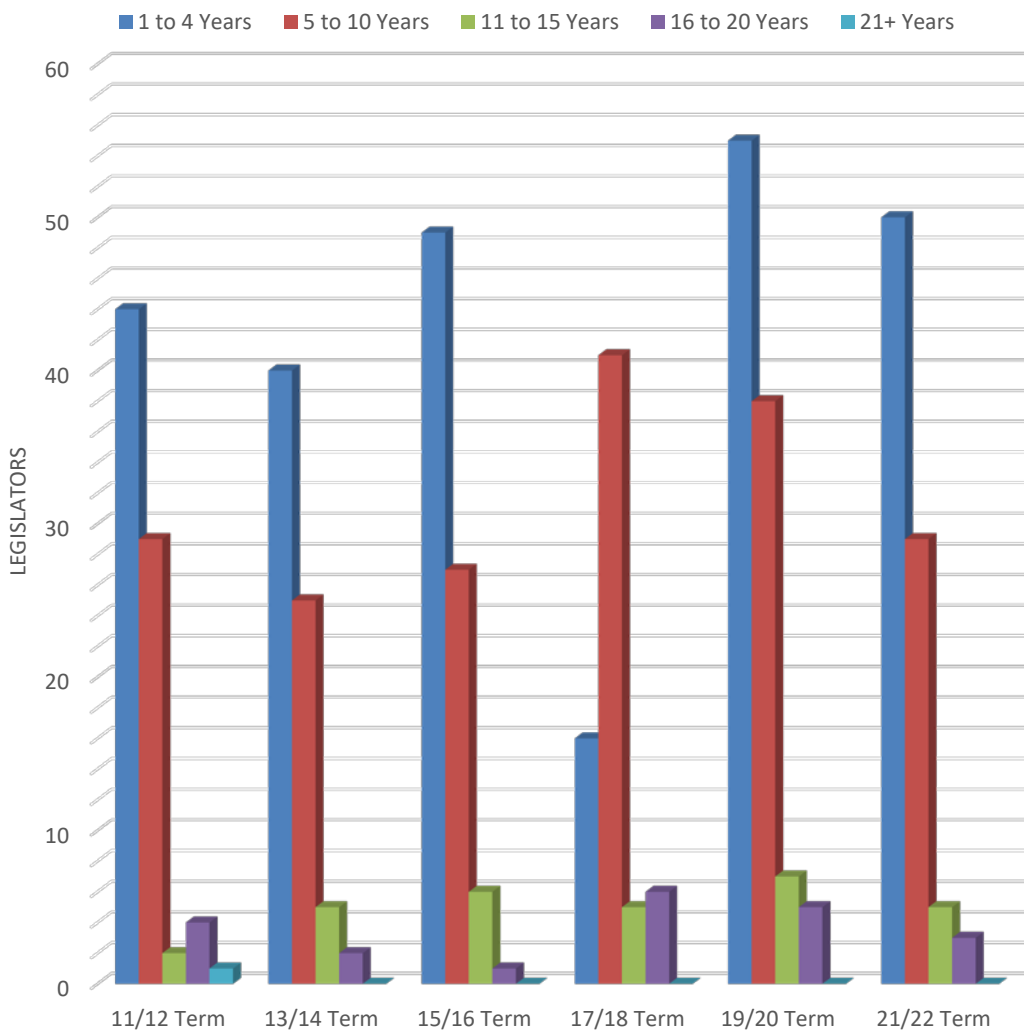


TENURE

The 2021 Senate included seventeen new senators. Nine of the new members had previous legislative experience. Eight of these new Senate members were representatives in 2020. The new senators comprised 49 percent of the entire Senate membership.

Twenty-six new representatives served in the 2021 House of Representatives. For 16, it was their first experience as legislators. Ten had served in the Legislature in the past. These new representatives comprised 37 percent of the entire House of Representatives membership.

Graph 17
LEGISLATOR TENURE
ALL LEGISLATORS

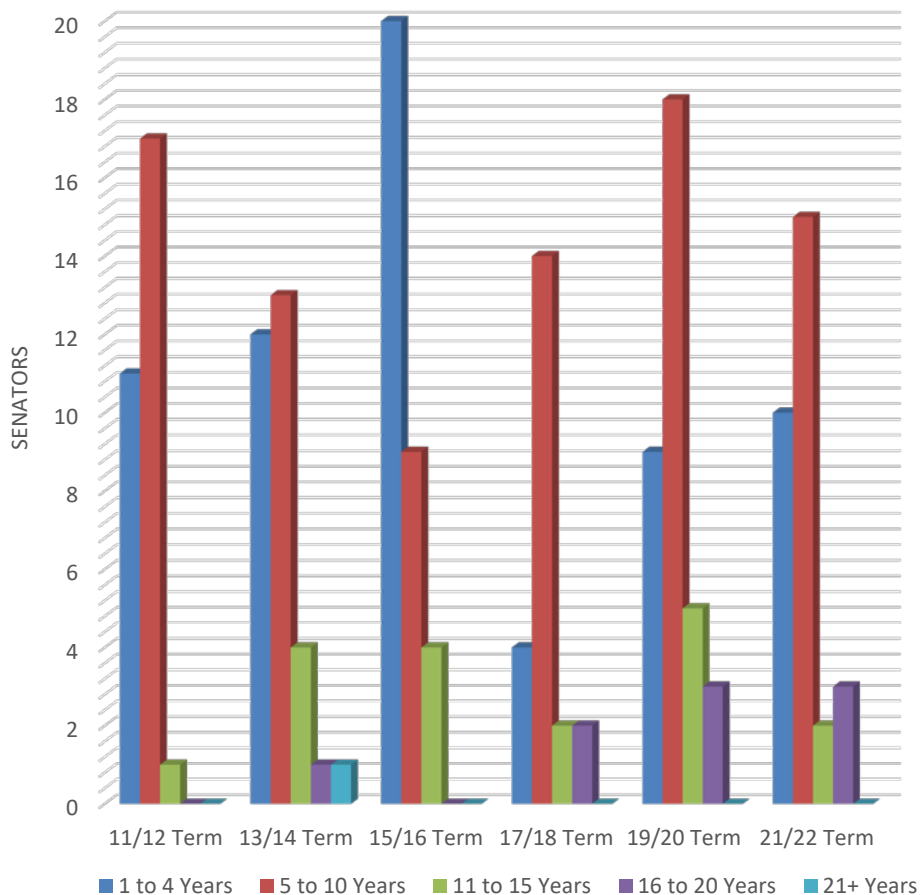


The average length of legislative service prior to 2021 by all senators was 6.4 years. The Republicans had an average of 8.5 years of prior legislative service, and the Democrats' average prior legislative service was 5.6 years. The greatest length of prior legislative service by a senator was 20 years. This data is compared with data from previous legislative terms in Table E and Graph 18.

Table E
PRIOR LEGISLATIVE SERVICE OF SENATE MEMBERS
(in years)

	2005-2006	2007-2008	2009-2010	2011-2012	2013-2014	2015-2016	2017-2018	2019-2020	2021-2022
Average prior legislative service per senator	6.3	6.2	5.7	5.8	5.7	5.8	8.6	8.1	6.4
Senate Democrats average prior legislative service	6.8	5.3	6.6	4.4	5.4	6.2	8	5.6	4.7
Senate Republicans average prior legislative service	6.1	6.8	5.0	6.1	5.8	5.6	8.7	8.5	6.6
Greatest length of prior legislative service	14	16	18	23	16	14	18	20	20

Graph 18
LEGISLATOR TENURE IN SENATE

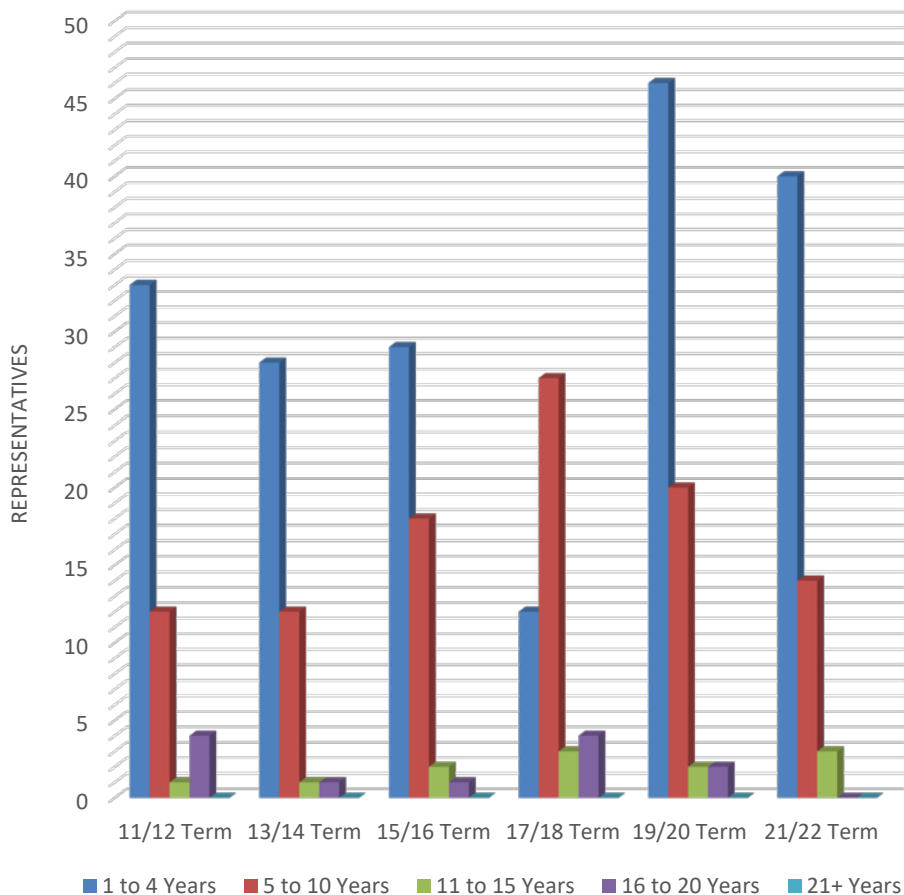


The average length of prior legislative service of all House members was 4.9 years. The Democrats had an average of 2.8 years of prior legislative service, and the Republicans' average prior legislative service was 3.6 years. The greatest length of prior legislative service by a representative was 14 years. This data is compared with data from previous legislative terms in Table F and Graph 19.

Table F
PRIOR LEGISLATIVE SERVICE OF HOUSE MEMBERS
(in years)

	2005-2006	2007-2008	2009-2010	2011-2012	2013-2014	2015-2016	2017-2018	2019-2020	2021-2022
Average prior legislative service per representative	3.7	4.2	3.3	3.7	2.9	3.3	7	4.9	3.5
House Democrats average prior legislative service	4.5	5.3	3.3	5.4	3.9	4.7	8	3.6	2.8
House Republicans average prior legislative service	3.3	3.8	3.2	3.1	2.6	3	6.5	5.2	3.6
Greatest length of prior legislative service	26	28	21	20	16	16	18	20	14

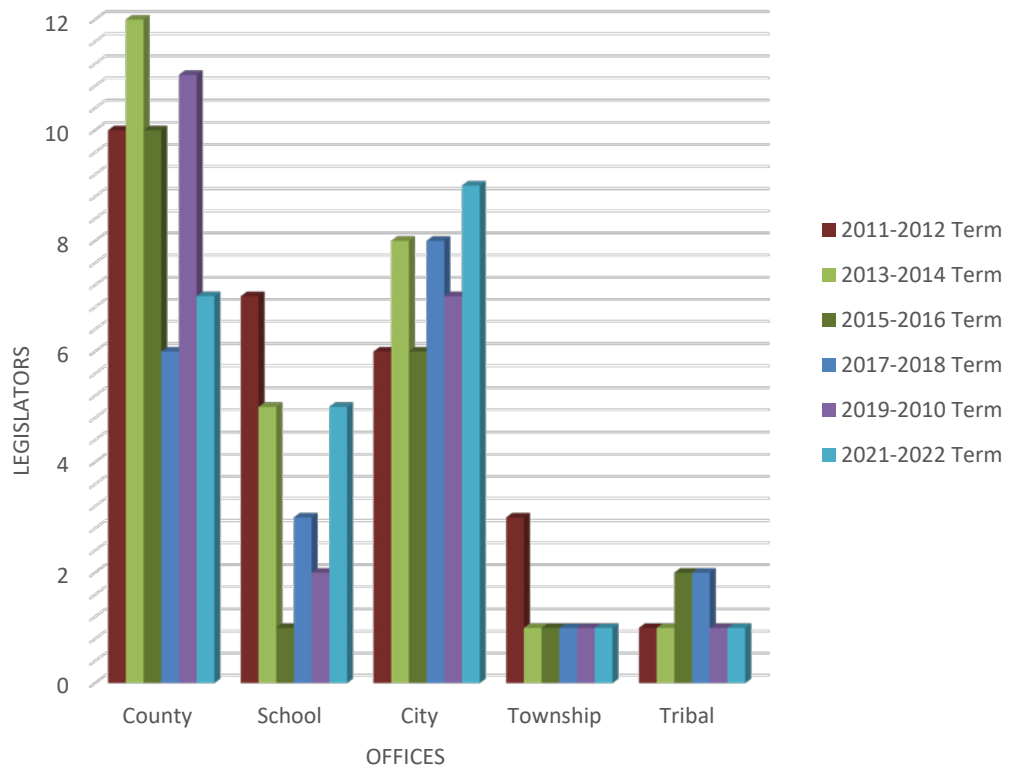
Graph 19
LEGISLATOR TENURE IN HOUSE OF REPRESENTATIVES



PUBLIC SERVICE

In the 2021 Legislature, twenty-three members held at least one other public office before serving in the Legislature. Five legislators had been school board members, and seven legislators previously held county positions. Nine legislators had been city officials, one had been a township official, and one had held a tribal office. This data is compared with data from previous legislative terms in the following graph.

Graph 20
OTHER PUBLIC OFFICES HELD
ALL LEGISLATORS



THE HOUSE OF REPRESENTATIVES

House of Representatives Leadership

House of Representatives leadership for the Ninety-Sixth Legislature was as follows:

Speaker:

Spencer Gosch, Glenham

Speaker Pro Tempore:

Jon Hansen, Dell Rapids

Majority Leader:

Kent Peterson, Salem

Minority Leader:

Jamie Smith, Sioux Falls

Assistant Majority Leader:

Chris Johnson, Rapid City

Assistant Minority Leader:

Oren Lesmeister, Parade

Majority Whips:

Kirk Chaffee, Whitewood

Tim Goodwin, Rapid City

Kevin D. Jensen, Canton

Rebecca Reimer, Chamberlain

Marli Wiese, Madison

Minority Whips:

Shawn Bordeaux, Mission

Erin Healy, Sioux Falls



THE SENATE

Senate Leadership

The Senate leadership for the Ninety-Sixth Legislature was as follows:

President:

Lt. Governor, Larry Rhoden, Union Center

President Pro Tempore:

Lee Schoenbeck, Watertown

Majority Leader:

Gary Cammack, Union Center

Minority Leader

Troy Heinert, Mission

Assistant Majority Leader:

Michael Diedrich, Rapid City

Assistant Minority Leader:

Red Dawn Foster, Pine Ridge

Majority Whips:

Jim Bolin, Canton

Casey Crabtree, Madison

Helene Duhamel, Rapid City

Kyle Schoenfish, Scotland

Minority Whips:

Reynold Nesiba, Sioux Falls





LEGISLATIVE COMMITTEES



THE LEGISLATIVE COMMITTEES

The 2021 Legislature was divided into 14 standing committees in each house and 1 joint committee that consisted of the Senate and House Committees on Appropriations. The committees and their membership were as follows:

	Senate	House	Joint
1. Agriculture and Natural Resources	7	13	
2. Appropriations	9	9	18
3. Commerce and Energy	9	13	
4. Education	7	15	
5. Government Operations and Audit	5	5	
6. Health and Human Services	7	13	
7. Judiciary	7	13	
8. Legislative Procedure	7	7	
9. Local Government	7	13	
10. Military and Veteran Affairs	5	13	
11. Retirement Laws	5	5	
12. State Affairs	9	13	
13. Taxation	7	13	
14. Transportation	7	13	

The workload of the various committees in 2021 and over the past 9 years is summarized in Table G and H on pages 28 and 29.

The number of standing committees each legislative session since 1891 is summarized in Table I on page 32.

Table G
Total Number of Bills and Resolutions Referred to Committees
For Years 2012 through 2021
Senate

COMMITTEE	2012	2013	2014	2015	2016	2017	2018	2019	2020	2021
AGRICULTURE & NATURAL RESOURCES	27	51	22	24	21	18	35	25	29	34
APPROPRIATIONS	46	51	57	65	76*	53*	86*	63*	58*	87*
COMMERCE & ENERGY	48	47	49	44	33	38	54	46	40	48
EDUCATION	27	28	33	33	24	25	32	21	24	23
HEALTH & HUMAN SERVICES	35	31	25	21	26	28	29	33	30	37
GOVERNMENT OPERATIONS & AUDIT	0	0	3	0	0	0	0	0	0	0
JUDICIARY	59	36	44	46	62	53	67	50	57	56
LEGISLATIVE PROCEDURE	0	0	0	0	0	0	0	0	0	0
LOCAL GOVERNMENT	34	33	28	30	31	29	37	27	30	30
MILITARY & VETERAN AFFAIRS	0	0	0	0	0	0	8	10	12	11
RETIREMENT LAWS	3	4	4	0	3	4	5	5	6	4
STATE AFFAIRS	50	70	59	61	44	49	72	54	44	53
TAXATION	24	22	21	17	20	15	14	21	29	14
TRANSPORTATION	24	30	30	22	21	23	34	17	23	21
TOTAL By Year	377	403	375	363	361	335	473	372	382	382

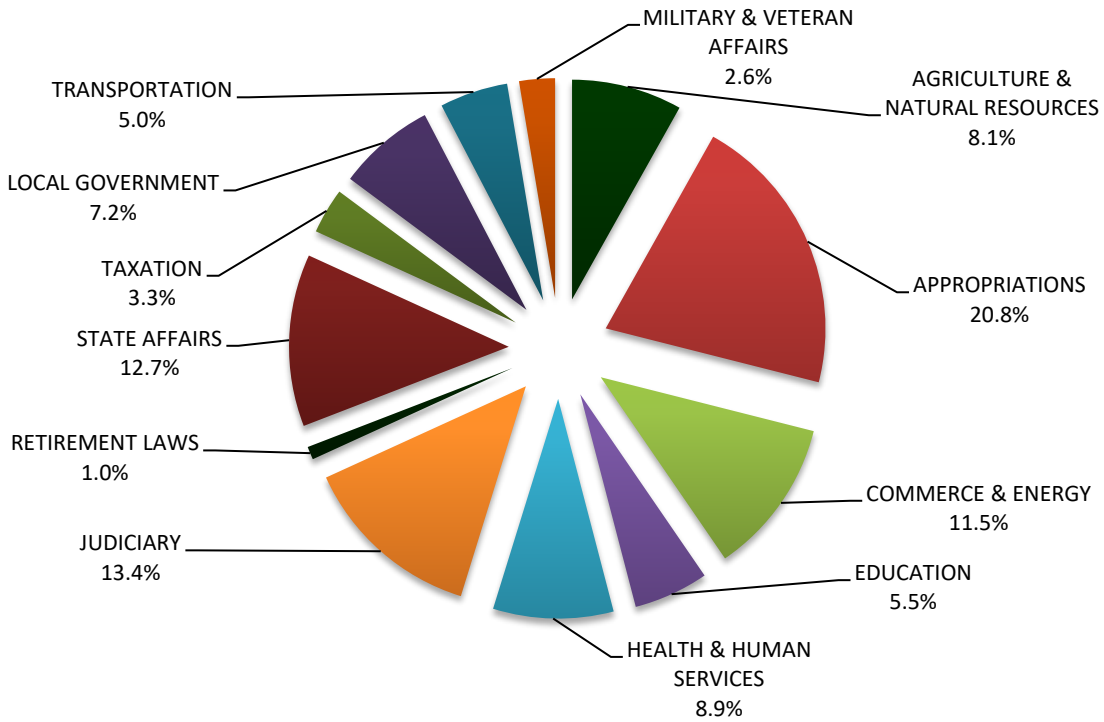
* FY16, FY 17, FY 18, FY 19, FY 20, and FY 21 Appropriations includes all bills referred to the Joint Committee on Appropriations.

Table H
Total Number of Bills and Resolutions Referred to Committees
For Years 2012 through 2021
House of Representatives

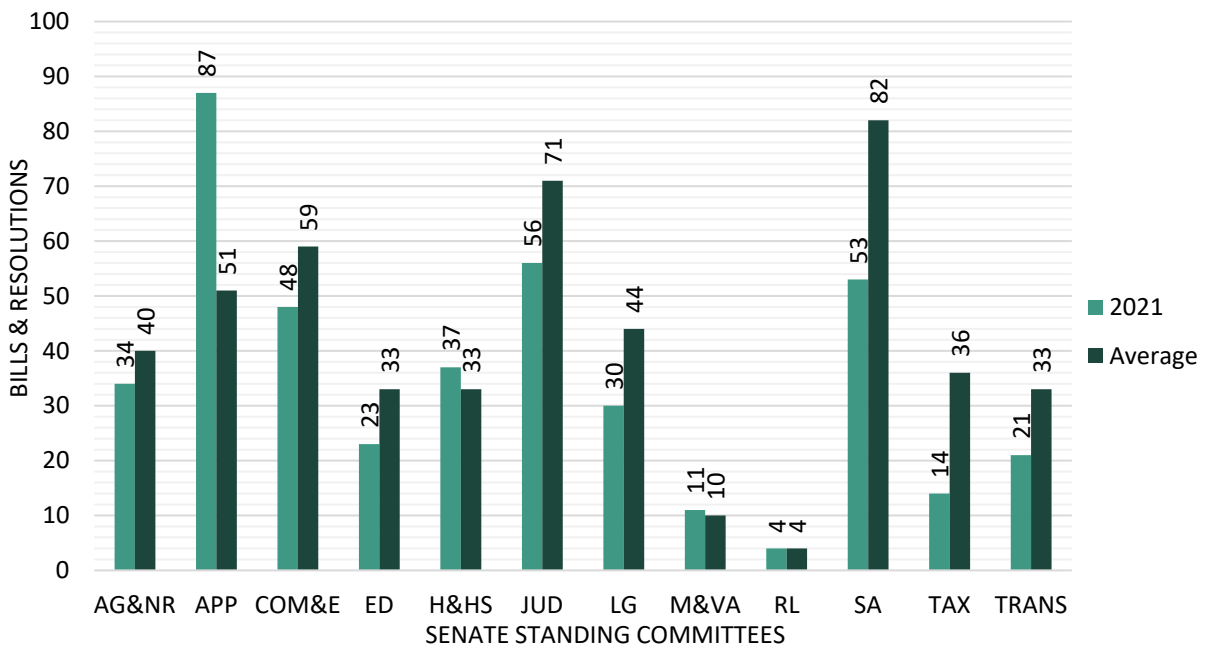
COMMITTEE	2012	2013	2014	2015	2016	2017	2018	2019	2020	2021
AGRICULTURE & NATURAL RESOURCES	36	43	27	18	30	18	28	30	32	39
APPROPRIATIONS	50	32	60	56	78	62	83	59	63	104
COMMERCE & ENERGY	46	45	43	51	38	39	53	55	45	48
EDUCATION	27	30	29	31	26	15	33	42	40	26
HEALTH & HUMAN SERVICES	31	29	28	22	27	35	24	36	36	40
GOVERNMENT OPERATIONS & AUDIT	0	0	1	0	0	0	5	2	1	0
JUDICIARY	76	61	69	55	56	65	83	64	73	60
LEGISLATIVE PROCEDURE	0	0	0	0	0	0	0	0	0	0
LOCAL GOVERNMENT	38	34	27	31	41	19	27	17	26	38
MILITARY & VETERANS AFFAIRS	0	0	0	0	0	0	0	11	4	10
RETIREMENT LAWS	3	4	4	5	3	4	4	3	4	5
STATE AFFAIRS	75	74	68	91	62	66	108	82	57	74
TAXATION	27	18	25	29	24	13	16	19	20	19
TRANSPORTATION	26	29	35	13	15	25	40	17	31	28
TOTAL By Year	435	399	416	402	400	361	504	437	432	491

*FY16, FY 17, FY 18, FY 19, FY 20, and FY 21 Appropriations includes all bills referred to the Joint Committee on Appropriations.

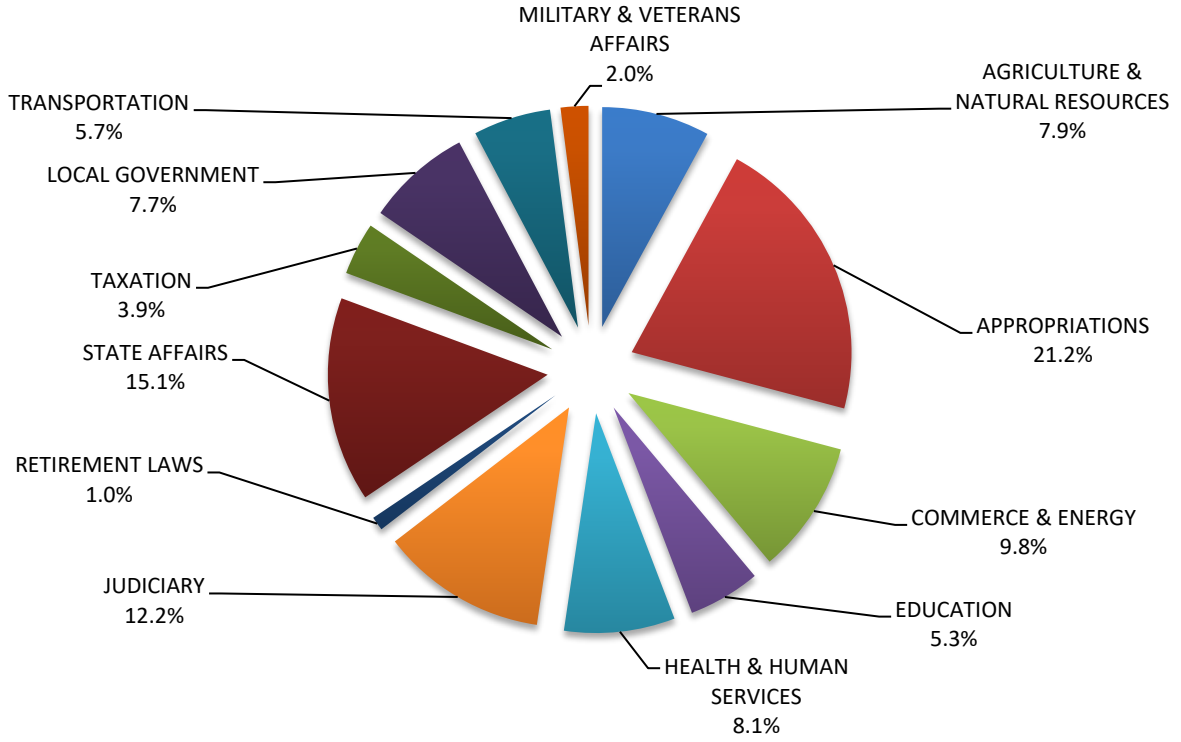
Graph 21
2021 Distribution of Bills
To Senate Committees



Graph 22
2021 Senate Committee Workload
Compared to Average Year



Graph 23
2021 Distribution of Bills
To House Committees



Graph 24
2021 House Committee Workload
Compared to Average Year

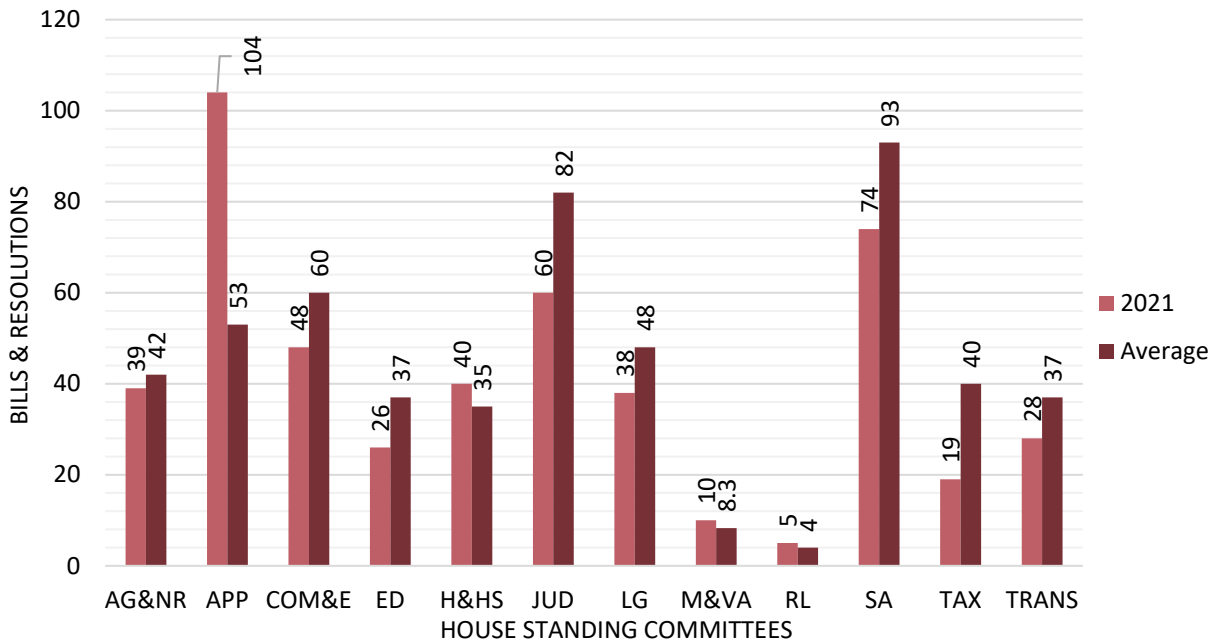
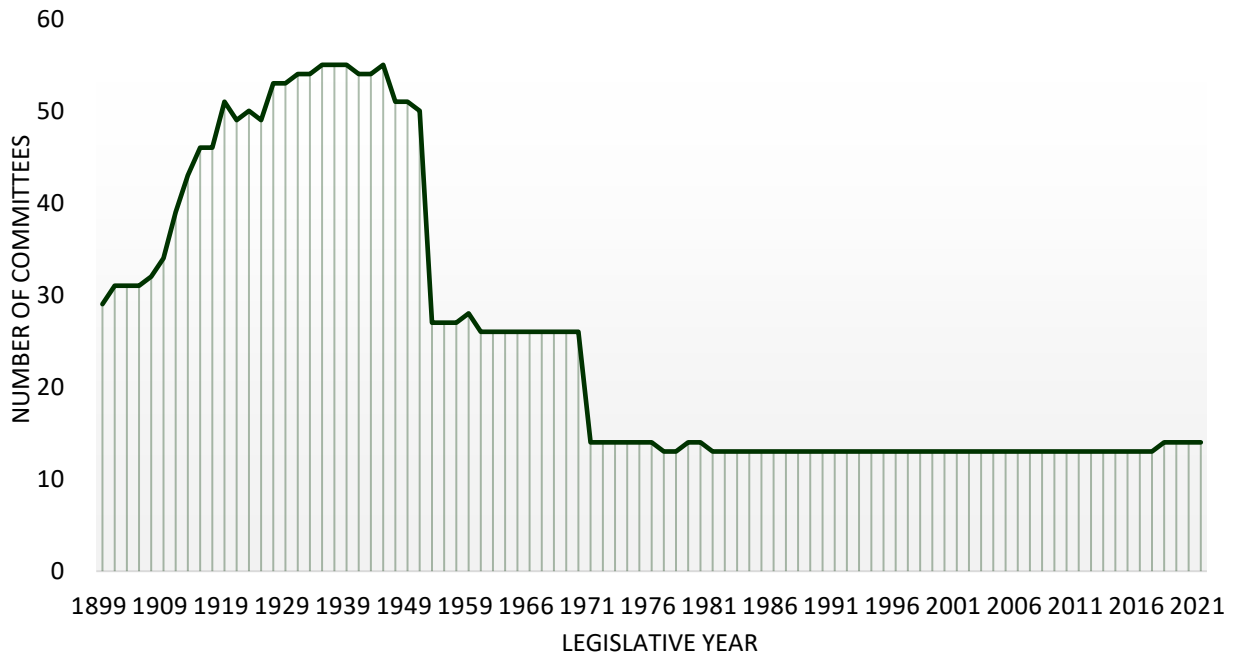


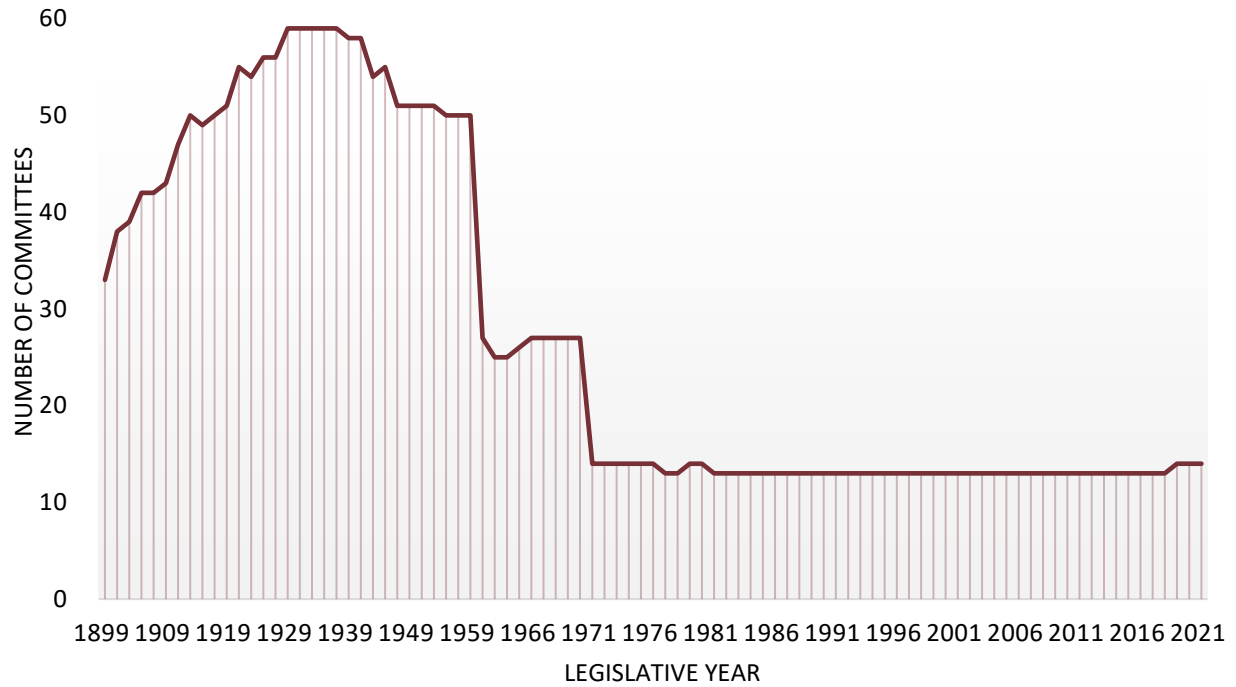
Table I
Number of Standing Legislative Committees Each Session
For Years 1891 through 2021

Year	Senate	House	Year	Senate	House	Year	Senate	House	Joint
1891	34	34	1966	26	27	2005	13	13	
1893	36	32	1967	26	27	2006	13	13	
1895	34	35	1968	26	27	2007	13	13	
1897	26	33	1969	26	27	2008	13	13	
1899	29	33	1970	26	27	2009	13	13	
1901	31	38	1971	14	14	2010	13	13	
1903	31	39	1972	14	14	2011	13	13	
1905	31	42	1973	14	14	2012	13	13	
1907	32	42	1974	14	14	2013	13	13	
1909	34	43	1975	14	14	2014	13	13	
1911	39	47	1976	14	14	2015	13	13	
1913	43	50	1977	13	13	2016	13	13	1
1915	46	49	1978	13	13	2017	13	13	1
1917	46	50	1979	14	14	2018	14	13	1
1919	51	51	1980	14	14	2019	14	14	1
1921	49	55	1981	13	13	2020	14	14	1
1923	50	54	1982	13	13	2021	14	14	1
1925	49	56	1983	13	13				
1927	53	56	1984	13	13				
1929	53	59	1985	13	13				
1931	54	59	1986	13	13				
1933	54	59	1987	13	13				
1935	55	59	1988	13	13				
1937	55	59	1989	13	13				
1939	55	58	1990	13	13				
1941	54	58	1991	13	13				
1943	54	54	1992	13	13				
1945	55	55	1993	13	13				
1947	51	51	1994	13	13				
1949	51	51	1995	13	13				
1951	50	51	1996	13	13				
1953	27	51	1997	13	13				
1955	27	50	1998	13	13				
1957	27	50	1999	13	13				
1959	28	50	2000	13	13				
1961	26	27	2001	13	13				
1963	26	25	2002	13	13				
1964	26	25	2003	13	13				
1965	26	26	2004	13	13				

Graph 25
Senate Committees
Number Each Legislative Session



Graph 26
House of Representatives Committees
Number Each Legislative Session



DISPOSITION OF BILLS AND RESOLUTIONS



2021 DISPOSITION OF BILLS AND RESOLUTIONS

During the 2021 Legislative Session, 478 bills were introduced. This number was 14 less than in 2020 and was 64 fewer than the average number of bills previously introduced in a 40-day session. The lowest number of bills ever introduced in a legislative session was in 2017 when 390 bills were introduced. The highest number of bills ever introduced in a legislative session was in 1957 when 929 bills were introduced.

There were 195 Senate bills introduced. The number of Senate bills introduced was one more than in 2020 and was 38 fewer than the average number of Senate bills previously introduced in a 40-day session. The record for the highest number of Senate bills introduced in a legislative session is 405, that was set in 1913. The record for the fewest Senate bills was set in 2016 when only 172 Senate bills were introduced.

There were 283 House bills introduced. The number of House bills was 15 less than in 2020 and was 26 less than the average number of bills previously introduced in a 40-day session. The record for the highest number of House bills introduced in a legislative session occurred in 1957 when 576 were introduced. The fewest number of House bills ever introduced occurred in 1905 when only 212 were introduced.

Of all the bills introduced in 2021, 247 passed both houses of the Legislature and were delivered to the Governor. One bill was returned by the Governor for style and form changes and those changes were not approved by the Legislature. The 246 bills that became law were 51 fewer than the average number of bills previously enacted in a 40-day session and were four more than became law in 2020. The most bills ever enacted in a single session occurred in 1957 when 505 bills were enacted. The fewest bills were enacted in 1897 when only 104 bills became law.

In 2021, 51.7 percent of the bills introduced were enacted. This was slightly higher than in 2020 when 48.8 percent were enacted. The highest percentage of bills ever enacted in a single session occurred in 1947 when 73.1 percent of that year's bills were enacted. The lowest percentage of bills ever enacted in a single session occurred in 1897 when only 18.6 percent of the bills were enacted. In 2021, 42 percent of the House bills introduced were enacted. The previous average percentage of House bills enacted in a 40-day session was 54.7 percent. 65.6 percent of the Senate bills introduced were enacted. This was above the previous average percentage of Senate bills enacted in a 40-day session of 55.6 percent.

The number of bills vetoed in 2021 (1) was six fewer than the average number of bills vetoed each year. Only in the years 1933 and 1955 were no bills vetoed by the Governor. The most bills vetoed occurred in 1980 when 30 bills were vetoed.

The number of concurrent resolutions introduced in both houses in 2021 was 23. This was six less than was introduced in 2020. Fourteen of the concurrent resolutions introduced in 2021 were adopted.

There were five House joint resolutions and two Senate joint resolutions introduced in 2021. The number of joint resolutions introduced was one more than introduced in 2020. One of the joint resolutions introduced in 2021 was adopted.

There was one House resolution and two Senate resolutions introduced in 2021. Two of the resolutions introduced in 2021 were adopted.

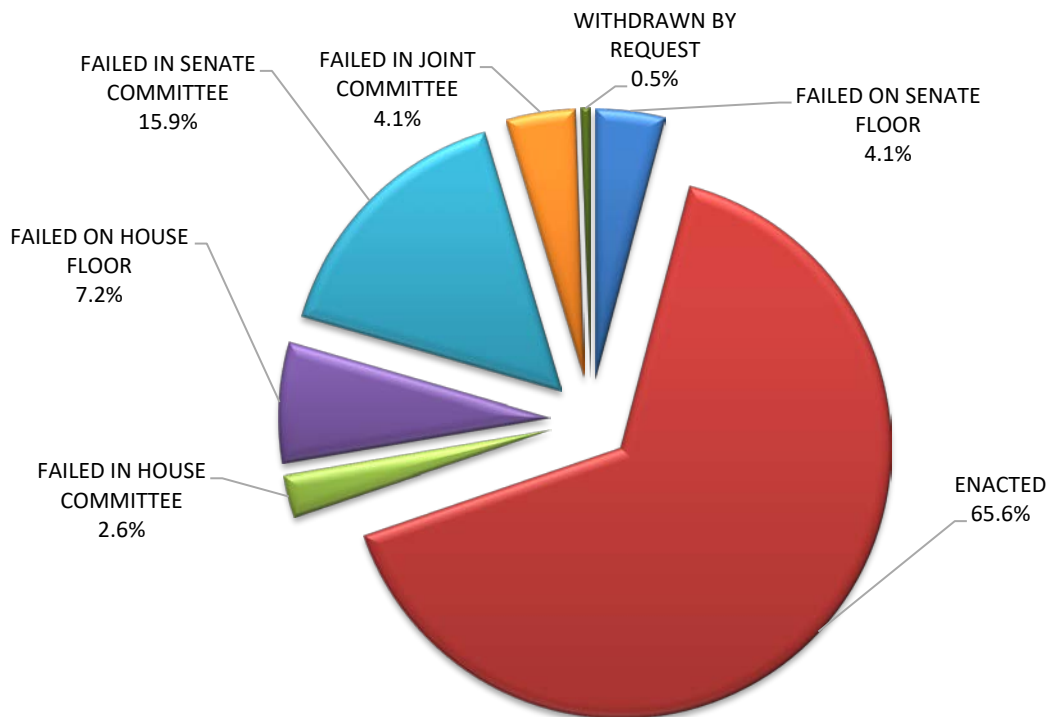
There was one Senate resolution of disapproval introduced in 2021. It was not adopted.

There were 14 House commemorations and 25 Senate commemorations introduced in the 2021 Legislature. The number of commemorations introduced was 26 less than introduced in 2020. The highest number of commemorations introduced in a legislative session occurred in 2013 with 132 commemorations introduced.

**Table J
Disposition of Senate Bills
2021**

Failed in Senate committee	31
Failed on Senate floor	8
Failed in House committee	5
Failed on House floor	14
Failed in Joint committee	8
Failed to Concur	0
Vetoed	0
Withdrawn	1
Enacted	128
Total	<hr/> 195

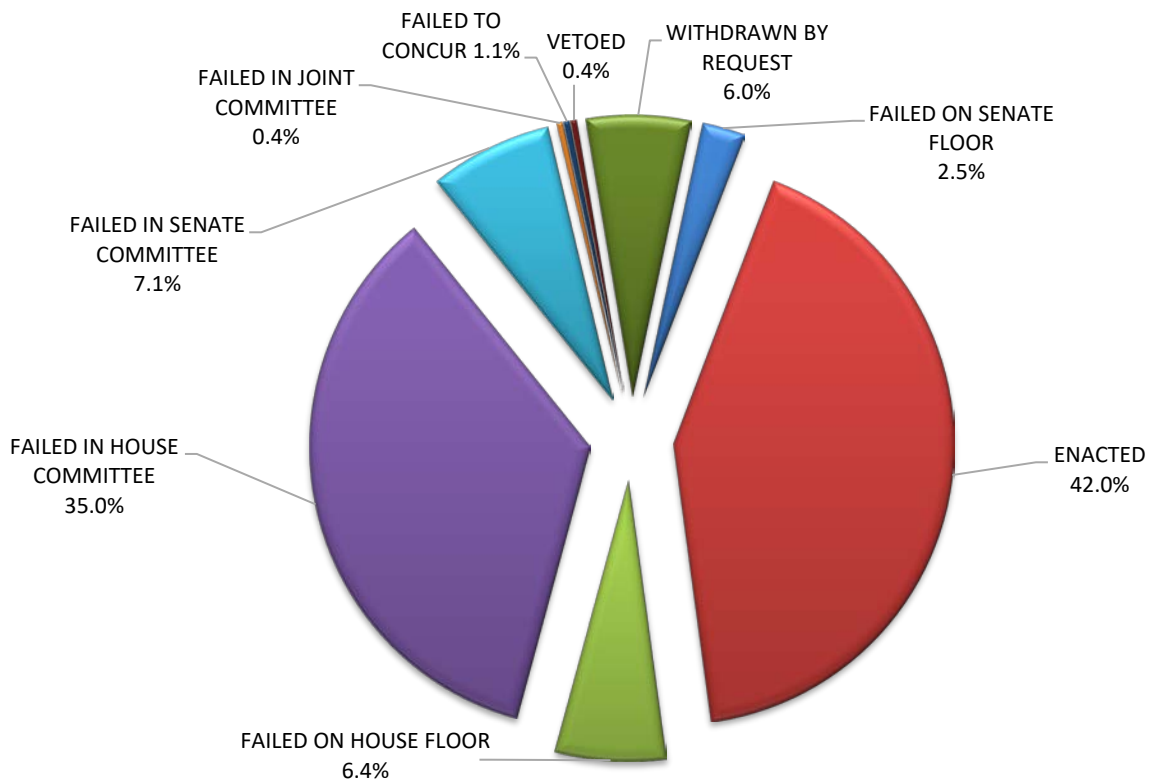
**Graph 27
Disposition of Senate Bills
2021**



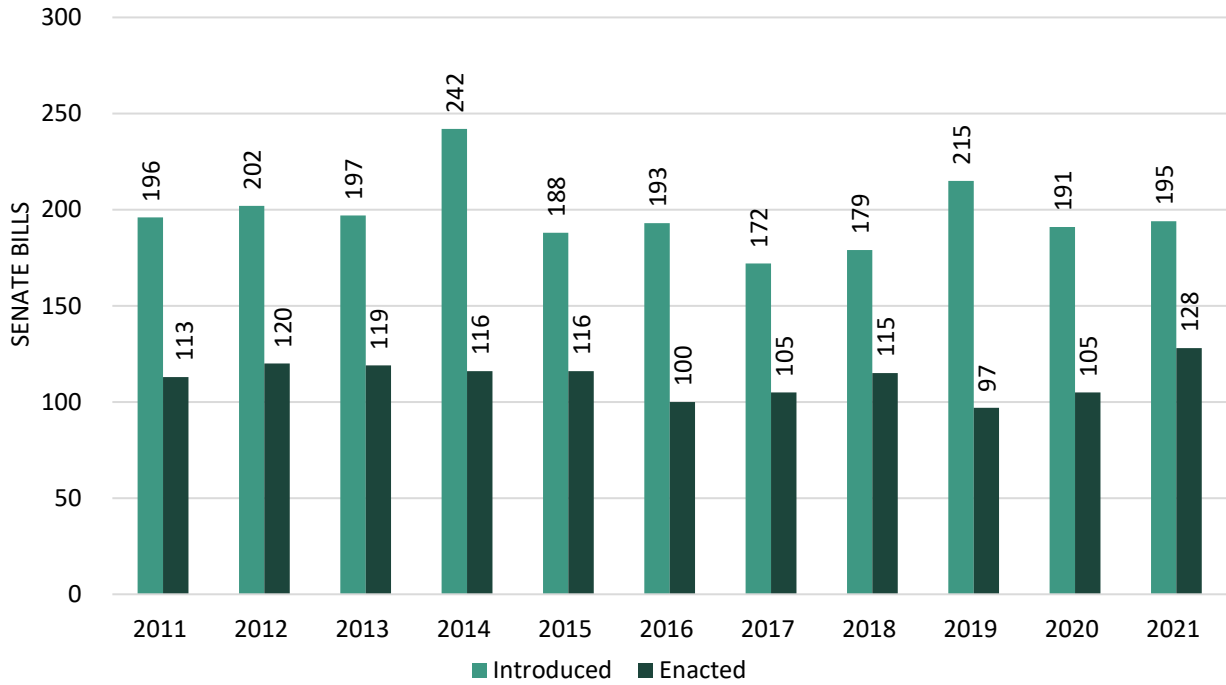
**Table K
Disposition of House Bills
2021**

Failed in House committee	99
Failed on House floor	18
Failed in Senate committee	20
Failed on Senate floor	7
Failed in Joint committee	1
Failed to Concur	1
Withdrawn	17
Vetoed	1
Enacted	119
Total	<hr/> 283

**Graph 28
Disposition of House Bills
2021**



Graph 29
Disposition of Senate Bills
2011-2021



Graph 30
Disposition of House Bills
2011-2021

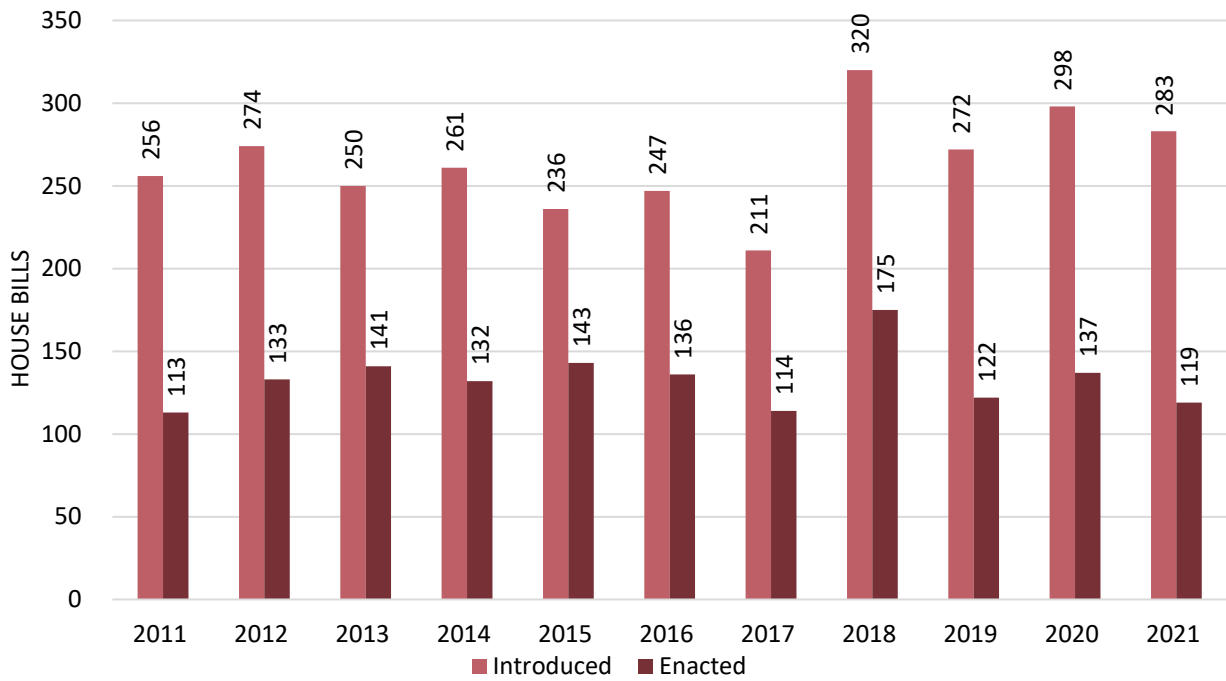


Table L
Disposition of Senate Bills
(1921-2021)

SESSION	LENGTH	INTRODUCED	DELIVERED	ENACTED	% ENACTED
1921	60	348	216	209	60.1%
1923	60	335	153	151	45.1%
1925	60	319	179	178	55.8%
1927	60	268	106	101	37.7%
1929	60	231	118	115	49.8%
1931	60	241	129	128	53.1%
1933	60	215	98	98	45.6%
1935	60	222	119	117	52.7%
1937	60	283	134	131	46.3%
1939	60	322	126	124	38.5%
1941	60	377	194	191	50.7%
1943	60	235	154	151	64.3%
1945	60	299	217	217	72.6%
1947	60	267	215	214	80.1%
1949	60	292	217	216	74.0%
1951	60	326	234	232	71.2%
1953	60	351	231	228	65.0%
1955	60	393	221	221	56.2%
1957	60	353	165	164	46.5%
1959	60	386	204	199	51.6%
1961	60	372	227	220	59.1%
1963	45	371	222	218	58.8%
1964	30	193	111	110	57.0%
1965	45	251	132	131	52.2%
1966	30	200	104	103	51.5%
1967	45	256	141	140	54.7%
1968	30	213	117	114	53.5%
1969	45	240	125	121	50.4%
1970	30	220	113	110	50.0%
1971	45	250	120	115	46.0%
1972	30	278	123	120	43.2%
1973	45	239	117	117	49.0%
1974	30	263	154	154	58.6%
1975	45	333	176	175	52.6%
1976	30	274	130	125	45.6%
1977	45	291	151	149	51.2%
1978	30	343	165	159	46.4%
1979	45	272	161	155	57.0%
1980	30	256	153	141	55.1%
1981	40	248	146	136	54.8%

SESSION	LENGTH	INTRODUCED	DELIVERED	ENACTED	% ENACTED
1982	35	245	159	152	62.0%
1983	40	257	162	159	61.9%
1984	35	223	134	128	57.4%
1985	39	311	189	186	59.8%
1986	35	293	184	179	61.1%
1987	40	285	160	152	53.3%
1988	35	348	211	204	58.6%
1989	40	328	196	194	59.1%
1990	35	342	181	179	52.3%
1991	40	268	167	163	60.8%
1992	35	273	169	166	60.8%
1993	40	312	176	173	55.4%
1994	35	269	149	146	54.3%
1995	40	242	124	120	49.6%
1996	35	287	147	142	49.5%
1997	40	272	153	149	54.8%
1998	34	242	139	135	55.8%
1999	39	252	125	119	47.2%
2000	34	209	109	109	52.2%
2001	40	255	137	132	51.8%
2002	35	187	102	100	53.5%
2003	40	226	125	123	54.4%
2004	35	218	138	136	62.4%
2005	40	225	132	130	57.8%
2006	35	210	121	121	57.6%
2007	40	219	118	115	52.5%
2008	35	203	110	109	53.7%
2009	40	203	120	120	59.1%
2010	39	196	110	108	55.1%
2011	38	202	115	113	55.9%
2012	33	197	121	120	60.9%
2013	38	242	120	119	49.2%
2014	38	188	117	116	61.7%
2015	39	193	118	116	60.1%
2016	38	172	105	100	58.1%
2017	38	179	107	105	58.7%
2018	38	215	116	115	53.5%
2019	40	191	98	97	50.8%
2020	37	194	105	105	54.1%
2021	37	195	128	128	65.6%

AVERAGES		INTRODUCED	DELIVERED	ENACTED	% ENACTED
60-DAY BIENNIAL		301	146	143	47.5%
45-DAY SESSIONS		278	149	147	52.8%
30-DAY SESSIONS		249	130	126	50.7%
40-DAY SESSIONS	*	233	133	131	55.9%
35-DAY SESSIONS	**	250	145	142	56.8%

*Includes 39-Day Session in 1985, 2010, & 2015, 38-Day Session in 2011, 2013, 2014, 2016, 2017, & 2018, and 37-Day Session in 2020 & 2021

**Includes 34-Day Session in 1998 & 2000 And 33-Day Session in 2012

Table M
Disposition of House Bills
(1921-2021)

SESSION	LENGTH	INTRODUCED	DELIVERED	ENACTED	% ENACTED
1921	60	370	214	209	56.5%
1923	60	334	160	159	47.6%
1925	60	287	124	123	42.9%
1927	60	271	129	122	45.0%
1929	60	292	135	133	45.5%
1931	60	328	144	141	43.0%
1933	60	314	107	107	34.1%
1935	60	225	93	91	40.4%
1937	60	262	131	128	48.9%
1939	60	318	173	171	53.8%
1941	60	389	184	179	46.0%
1943	60	248	168	166	66.9%
1945	60	218	141	139	63.8%
1947	60	310	212	208	67.1%
1949	60	353	230	226	64.0%
1951	60	365	239	237	64.9%
1953	60	444	268	267	60.1%
1955	60	422	221	221	52.4%
1957	60	576	343	341	59.2%
1959	60	526	268	260	49.4%
1961	60	496	257	247	49.8%
1963	45	469	253	252	53.7%
1964	30	239	123	118	49.4%
1965	45	399	186	182	45.6%
1966	30	353	165	164	46.5%
1967	45	394	218	214	54.3%
1968	30	350	166	161	46.0%
1969	45	394	171	167	42.4%
1970	30	367	195	194	52.9%
1971	45	380	193	188	49.5%
1972	30	373	175	172	46.1%
1973	45	410	238	237	57.8%
1974	30	391	229	224	57.3%
1975	45	342	175	172	50.3%
1976	30	388	203	196	50.5%
1977	45	448	270	260	58.0%
1978	30	365	215	204	55.9%
1979	45	343	201	191	55.7%
1980	30	372	228	215	57.8%
1981	40	383	245	237	61.9%

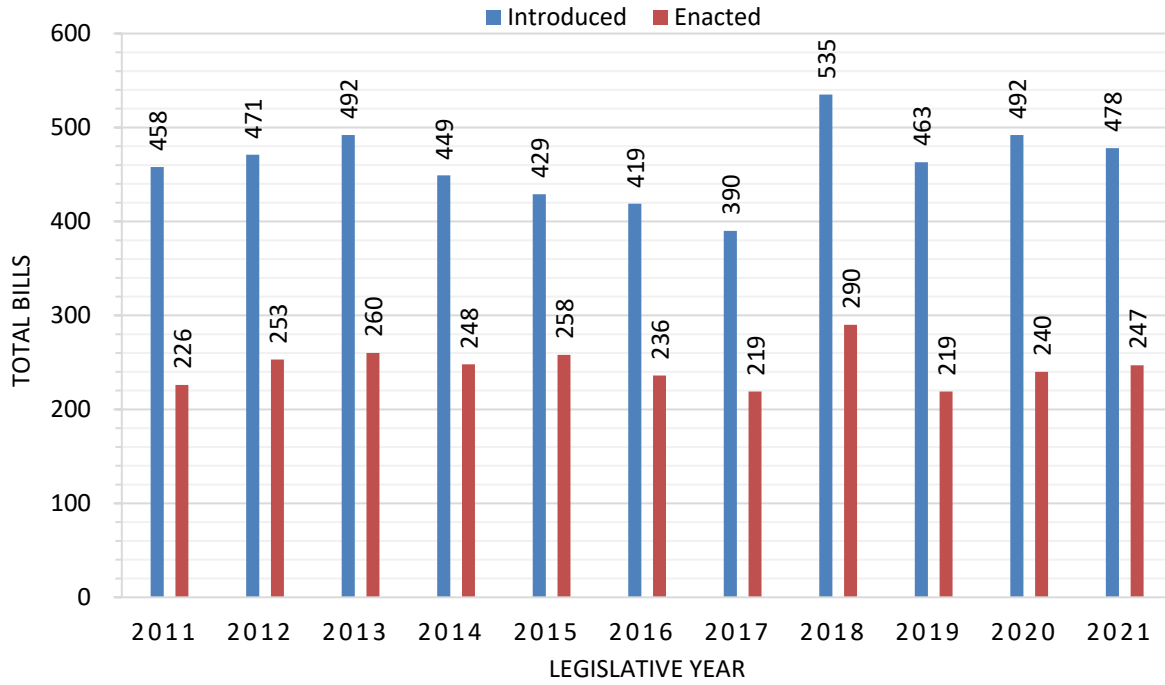
1982	35	333	222	218	65.5%
1983	40	368	239	228	62.0%
1984	35	358	218	210	58.7%
1985	39	373	213	207	55.5%
1986	35	391	250	245	62.7%
1987	40	371	238	235	63.3%
1988	35	349	213	209	59.9%
1989	40	433	256	256	59.1%
1990	35	388	235	235	60.6%
1991	40	417	258	254	60.9%
1992	35	350	203	199	56.9%
1993	40	356	212	206	57.9%
1994	35	395	254	254	64.3%
1995	40	360	185	178	49.4%
1996	35	364	168	164	45.1%
1997	40	285	159	151	53.0%
1998	34	330	165	162	49.1%
1999	39	304	142	141	46.4%
2000	34	318	148	144	45.3%
2001	40	298	166	160	53.7%
2002	35	305	145	142	46.6%
2003	40	284	136	135	47.5%
2004	35	312	178	175	56.1%
2005	40	266	158	154	57.9%
2006	35	248	151	149	60.1%
2007	40	312	186	184	59.0%
2008	35	321	170	166	51.7%
2009	40	301	155	154	51.2%
2010	39	278	141	139	50.0%
2011	38	256	113	113	44.1%
2012	33	274	135	133	48.5%
2013	38	250	141	141	56.4%
2014	38	261	132	132	50.6%
2015	39	236	143	143	60.6%
2016	38	247	137	136	55.1%
2017	38	211	117	114	54.0%
2018	38	320	177	175	54.7%
2019	40	272	123	122	44.9%
2020	37	298	139	137	46.0%
2021	37	283	120	119	42.0%

AVERAGES		INTRODUCED	DELIVERED	ENACTED	% ENACTED
60-DAY BIENNIAL		345	158	155	45.1%
45-DAY SESSIONS		398	212	207	52.1%
30-DAY SESSIONS		355	189	183	51.5%
40-DAY SESSIONS	*	309	170	167	54.2%
35-DAY SESSIONS	**	336	190	187	55.7%

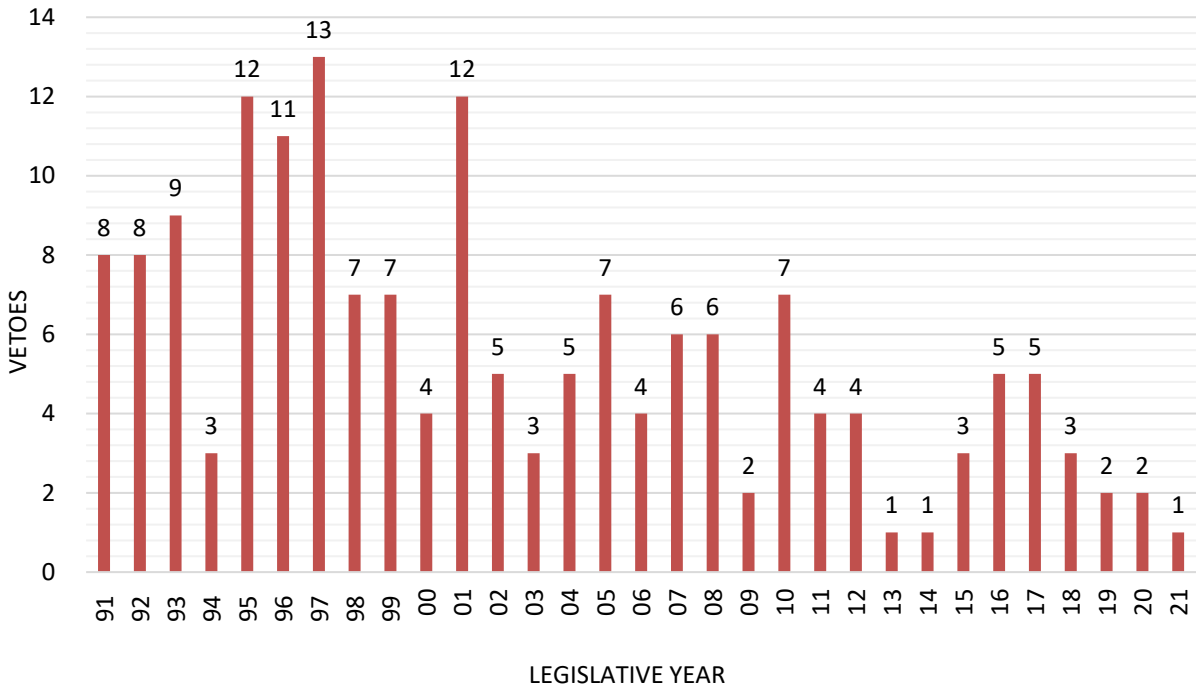
*Includes 39-Day Session in 1985, 1999, 2010, & 2015, 38-Day Session in 2011, 2013, 2014, 2016, 2017, & 2018 and 37-Day Session in 2020 & 2021

**Includes 34-Day Session in 1998 & 2000 And 33-Day Session in 2012

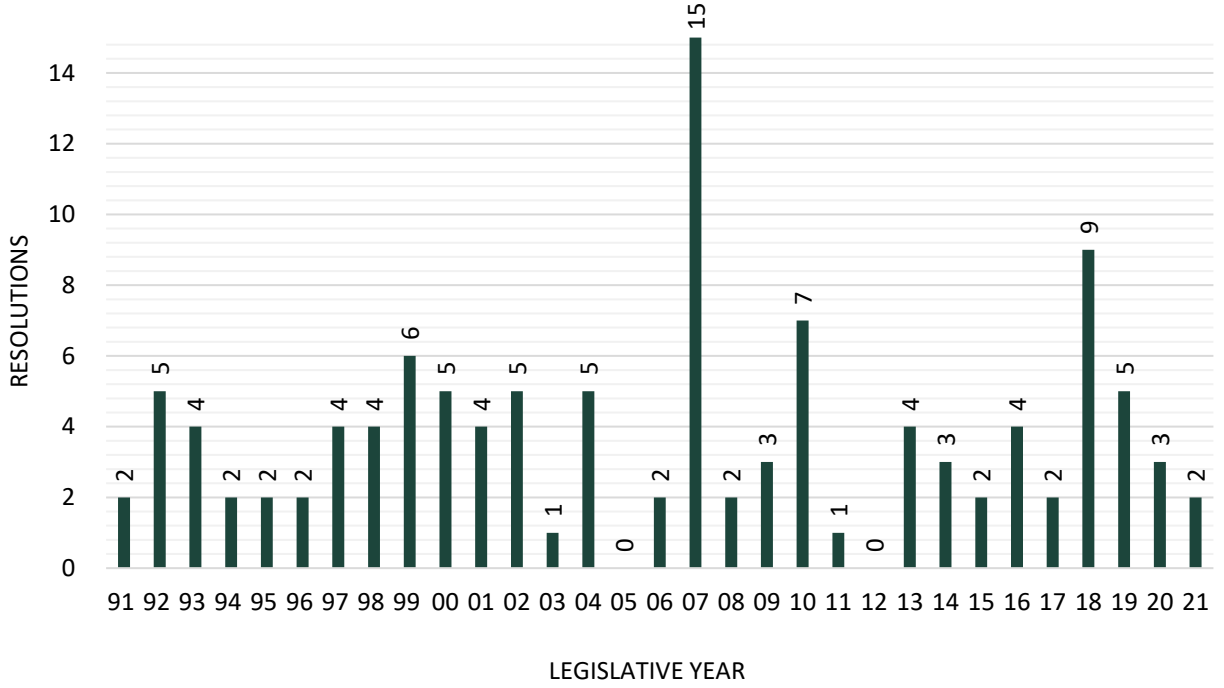
Graph 31
Disposition of Legislative Bills
2011-2021



Graph 32
Vetoes
1991-2021



Graph 33
Senate Joint Resolutions
Introduced 1991-2021



Graph 34
House Joint Resolutions
Introduced 1991-2021

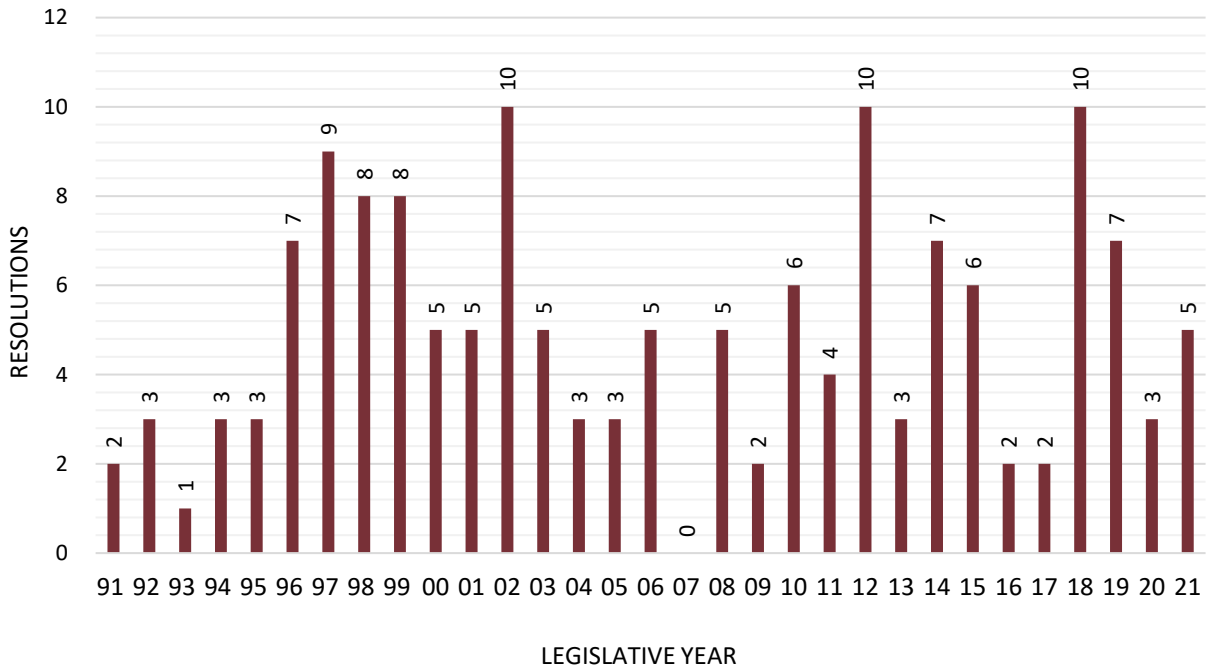


Table N
Disposition of all Legislative Bills for Years 1921 through 2021

SESSION	LENGTH	INTRODUCED	DELIVERED	ENACTED	% ENACTED
1921	60	718	430	418	58.2%
1923	60	669	313	310	46.3%
1925	60	606	303	301	49.7%
1927	60	539	235	223	41.4%
1929	60	523	253	248	47.4%
1931	60	569	273	269	47.3%
1933	60	529	205	205	38.8%
1935	60	447	212	208	46.5%
1937	60	545	265	259	47.5%
1939	60	640	299	295	46.1%
1941	60	766	378	370	48.3%
1943	60	483	322	317	65.6%
1945	60	517	358	356	68.9%
1947	60	577	427	422	73.1%
1949	60	645	447	442	68.5%
1951	60	691	473	469	67.9%
1953	60	795	499	495	62.3%
1955	60	815	442	442	54.2%
1957	60	929	508	505	54.4%
1959	60	912	472	459	50.3%
1961	60	868	484	467	53.8%
1963	45	840	475	470	56.0%
1964	30	432	234	228	52.8%
1965	45	650	318	313	48.2%
1966	30	553	269	267	48.3%
1967	45	650	359	354	54.5%
1968	30	563	283	275	48.8%
1969	45	634	296	288	45.4%
1970	30	587	308	304	51.8%
1971	45	630	313	303	48.1%
1972	30	651	298	292	44.9%
1973	45	649	355	354	54.5%
1974	30	654	383	378	57.8%
1975	45	675	351	347	51.4%
1976	30	662	333	321	48.5%
1977	45	739	421	409	55.3%
1978	30	708	380	363	51.3%
1979	45	615	362	346	56.3%
1980	30	628	381	356	56.7%
1981	40	631	391	373	59.1%
1982	35	578	381	370	64.0%
1983	40	625	401	387	61.9%
1984	35	581	352	338	58.2%
1985	39	684	402	393	57.5%
1986	35	684	434	424	62.0%
1987	40	656	398	387	59.0%
1988	35	697	424	413	59.3%
1989	40	761	452	450	59.1%

1990	35	730	416	414	56.7%
1991	40	685	425	417	60.9%
1992	35	623	372	365	58.6%
1993	40	668	388	379	56.7%
1994	35	664	403	400	60.2%
1995	40	602	309	298	49.5%
1996	35	651	315	306	47.0%
1997	40	557	312	300	53.9%
1998	34	572	304	297	51.9%
1999	39	556	267	260	46.8%
2000	34	527	257	253	48.0%
2001	40	553	303	292	52.8%
2002	35	492	247	242	49.2%
2003	40	510	261	258	50.6%
2004	35	530	316	311	58.7%
2005	40	491	290	284	57.8%
2006	35	458	272	270	59.0%
2007	40	531	304	299	56.3%
2008	35	524	280	275	52.5%
2009	40	504	275	274	54.4%
2010	39	474	251	247	52.1%
2011	38	458	228	226	49.3%
2012	33	471	256	253	53.7%
2013	38	492	261	260	52.8%
2014	38	449	249	248	55.2%
2015	39	429	260	258	60.1%
2016	38	419	242	236	56.3%
2017	38	390	224	219	56.2%
2018	38	535	293	290	54.2%
2019	40	463	221	219	47.3%
2020	37	492	244	242	48.8%
2021	37	478	248	247	51.7%

AVERAGES		INTRODUCED	DELIVERED	ENACTED	% ENACTED
60-DAY BIENNIAL		646	305	299	46.2%
45-DAY SESSIONS		676	361	354	52.4%
30-DAY SESSIONS		604	319	309	51.2%
40-DAY SESSIONS	*	542	304	298	54.9%
35-DAY SESSIONS	**	585	335	329	56.1%

*Includes 39-Day Session in 1985, 1999, 2010, & 2015, 38-Day Session in 2011, 2013, 2014, 2016, 2017, & 2018 and 37-Day Session in 2020 & 2021

**Includes 34-Day Session in 1998 & 2000 And 33-Day Session in 2012

Table O
Bills Vetoed by the Governor for Years 1921 through 2021

Session	Total Bills Vetoed^a	House Bills Vetoed	Senate Bills Vetoed^b	Veto Overridden	Line Item Vetoed in General Appropriations Bill
1921	12	5	7	---	0
1923	3	1	2	---	0
1925	2	1	1	---	2
1927	12	7	5	---	16 ^d
1929	5	2	3	---	1
1931	4	3	1	---	0
1933	0	0	0	---	0
1935	4	2	2	---	0
1937	6	3	3	---	0
1939	4	2	2	---	0
1941	8	5	3	---	0
1943	5	2	3	---	0
1945	3	3	0	---	0
1947	5	4	1	---	0
1949	5	4	1	---	0
1951	4	2	2	---	0
1953	4	1	3	---	0
1955	0	0	0	---	0
1957	3	2	1	---	0
1959	13	8	5	---	0
1961	17 ^c	10 ^c	7	---	0
1963	5	1	4	0	0
1964	6	5	1	0	0
1965	5	4	1	0	0
1966	2	1	1	0	0
1967	6	4	2	0	0
1968	8	5	3	0	1
1969	8	4	4	0	0
1970	4	1	3	0	0
1971	10	5	5	0	2
1972	6	3	3	0	2
1973	1	1	0	0	0
1974	5	5	0	0	1
1975	4	3	1	0	0
1976	12	7	5	0	0
1977	28	17	11	16	0
1978	18	12	6	1	0
1979	18	11	7	2	0
1980	31 ^c	16 ^c	15	6	1
1981	20	8	12	2	0
1982	11	4	7	0	0
1983	16	12	4	2	0
1984	15	9	6	2 ^e	1
1985	9	6	3	0	0
1986	13	6	7	3	0
1987	11 ^c	3	8 ^c	0	0

Session	Total Bills Vetoed ^a	House Bills Vetoed	Senate Bills Vetoed ^b	Veto Overridden	Line Item Vetoed in General Appropriations Bill
1988	14	5	9	3	15
1989	2	0	2	0	0
1990	2	0	2	0	0
1991	8	4	4	0	0
1992	8	4	4	1	5
1993	9	6	3	0	0
1994	3	0	3	0	0
1995	12 ^c	7	5	1	0
1996	11	4	7	2	2
1997	13	9	4	1	0
1998	7	3	4	0	0
1999	7	1	6	1 ^f	0
2000	4	4	0	0	0 ^g
2001	12	7	5	1	0
2002	5	3	2	0	0
2003	3	1	2	1 ^h	2 ^g
2004	5 ^c	2	3 ^c	0	0
2005	7	5	2	1	2 ^g
2006	4	4	0	2	0 ^g
2007	6	3	3	1	0
2008	6	5	1	1	2
2009	2	2	0	1	0
2010	7	4	3	3	0
2011	4	2	2 ^c	2	0
2012	4	3	1	1	0 ^g
2013	1	0	1	0	1 ^g
2014	1	0	1	0	0
2015	3	0	3	1	0
2016	5	1	4	0	0
2017	5	3	2	0	0
2018	3	2	1	0	0
2019	2	1	1	0	0
2020	2	2	0	0	0
2021	1 ^c	1	0	0	0

a- Doesn't include line item vetoes of general appropriations bill

b- Data on veto overrides incomplete prior to 1963

c- Includes one bill returned for style and form changes but not approved by the Legislature

d- General appropriations bill not passed during regular session but was passed in a special legislative session held prior to the beginning of the fiscal year

e- Includes override of line item veto

f- Override of style and form veto

g- Doesn't include a line item veto of special appropriations bill

h- Override of line item veto of special appropriations bill

Table P
Disposition of Joint Resolutions
(1921-2021)

Session	House Joint Resolutions		Senate Joint Resolutions	
	(Introduced)	(Adopted)	(Introduced)	(Adopted)
1921	7	2	11	5
1923	9	2	9	2
1925	5	0	9	2
1927	3	0	7	0
1929	6	3	7	3
1931	11	2	6	0
1933	11	1	5	2
1935	11	3	8	3
1937	9	2	13	3
1939	15	4	11	1
1941	10	3	9	2
1943	7	1	2	1
1945	10	3	2	1
1947	8	4	4	1
1949	6	4	6	2
1951	2	1	4	3
1953	3	3	5	2
1955	5	1	8	1
1957	6	2	9	3
1959	8	3	13	3
1961	6	1	9	3
1963	8	1	6	3
1964	9	2	7	0
1965	8	1	7	1
1966	8	1	7	1
1967	11	0	9	2
1968	24	2	9	2
1969	7	3	6	0
1970	14	4	12	4
1971	5	1	7	1
1972	18	4	8	1
1973	2	0	3	1
1974	7	2	1	0
1975	5	1	6	3
1976	13	3	3	0
1977	20	14	5	0
1978	8	5	9	3
1979	6	1	5	3
1980	8	4	0	0
1981	4	0	5	0

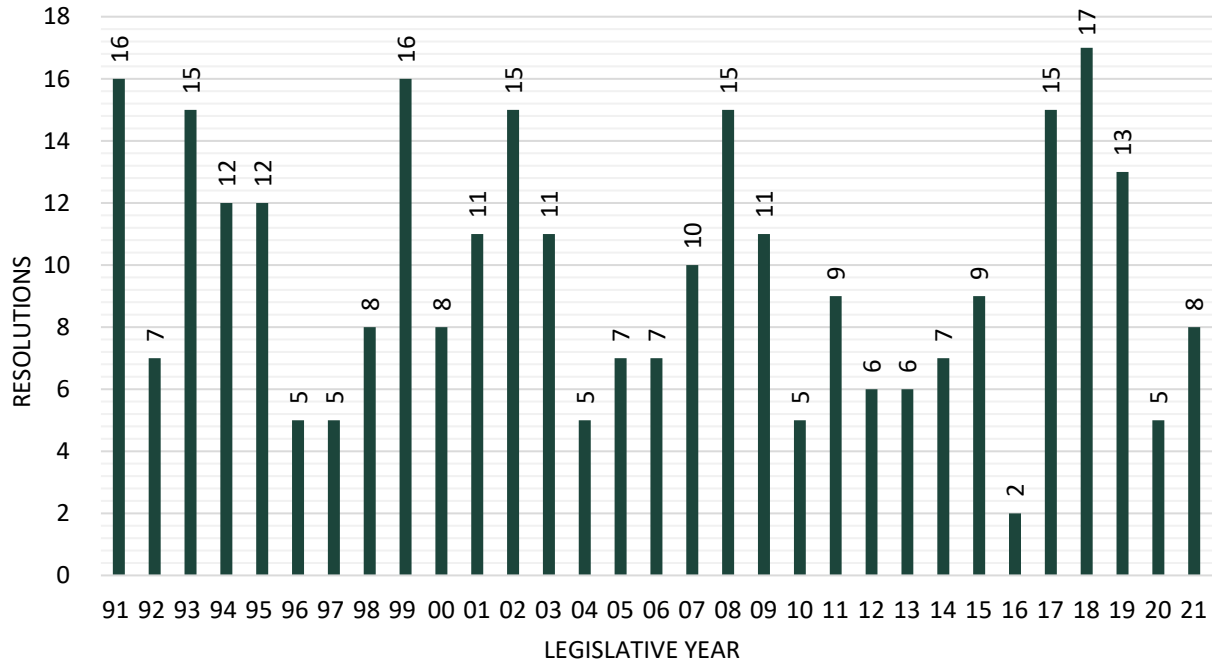
Session	House Joint Resolutions		Senate Joint Resolutions	
	(Introduced)	(Adopted)	(Introduced)	(Adopted)
1982	4	2	3	2
1983	0	0	0	0
1984	5	4	4	0
1985	6	4	3	1
1986	4	2	7	2
1987	2	1	1	0
1988	5	4	1	0
1989	4	1	3	2
1990	4	3	3	1
1991	2	0	2	0
1992	3	0	5	0
1993	1	1	4	3
1994	3	1	2	0
1995	3	2	2	0
1996	7	1	2	1
1997	9	3	4	0
1998	8	2	4	1
1999	8	2	6	0
2000	5	0	5	1
2001	5	0	4	1
2002	10	3	5	0
2003	5	1	1	0
2004	3	1	5	0
2005	3	1	0	0
2006	5	1	2	0
2007	0	0	15	0
2008	5	3	2	1
2009	2	0	3	0
2010	6	1	7	1
2011	4	0	1	0
2012	10	4	0	0
2013	3	0	4	0
2014	7	1	3	1
2015	6	4	2	0
2016	2	0	4	0
2017	2	0	2	0
2018	10	2	9	1
2019	7	1	5	0
2020	3	0	3	1
2021	5	1	2	0

Table Q
Disposition of Concurrent Resolutions
(1921-2021)

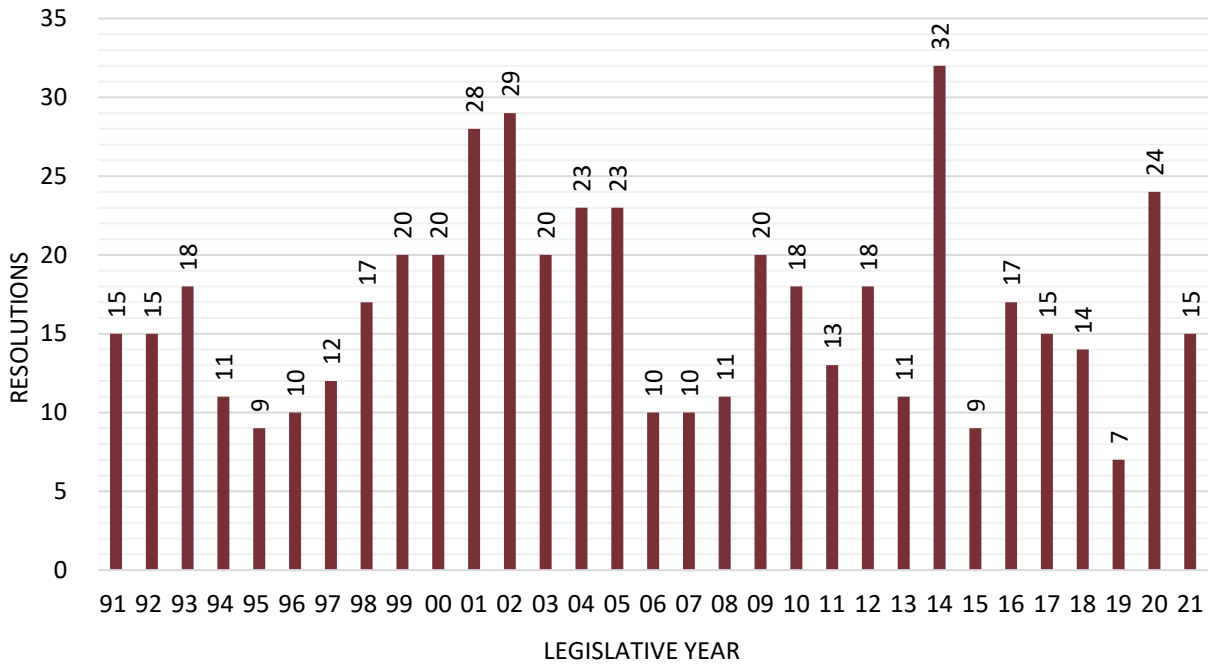
Session	House Concurrent Resolutions		Senate Concurrent Resolutions	
	(Introduced)	(Adopted)	(Introduced)	(Adopted)
1921	16	N/A	12	N/A
1923	29	10	29	10
1925	11	9	16	14
1927	4	4	23	14
1929	12	9	12	9
1931	23	9	20	15
1933	13	5	5	5
1935	16	8	12	5
1937	14	13	13	10
1939	15	12	12	9
1941	14	9	13	8
1943	9	6	12	6
1945	8	4	5	2
1947	7	6	7	6
1949	7	6	13	12
1951	13	11	15	8
1953	10	5	20	10
1955	13	1	6	2
1957	8	4	11	7
1959	9	2	15	2
1961	21	15	16	11
1963	18	12	14	9
1964	6	3	9	5
1965	26	15	13	8
1966	9	6	7	4
1967	12	10	17	13
1968	8	6	14	10
1969	24	18	11	8
1970	25	12	15	6
1971	30	23	17	11
1972	29	23	9	9
1973	33	28	9	6
1974	24	24	17	11
1975	20	17	20	15
1976	21	15	26	24
1977	21	18	18	15
1978	20	19	24	18
1979	19	17	27	22
1980	34	31	18	16
1981	33	28	31	28
1982	43	39	20	16
1983	58	56	34	27
1984	47	45	42	41
1985	37	33	23	21
1986	40	40	44	43
1987	55	52	50	46

Session	House Concurrent Resolutions		Senate Concurrent Resolutions	
	(Introduced)	(Adopted)	(Introduced)	(Adopted)
1988	36	35	31	29
1989	12	9	18	15
1990	7	6	16	13
1991	15	12	16	12
1992	15	12	7	6
1993	18	15	15	8
1994	11	9	12	8
1995	9	7	12	12
1996	10	7	5	1
1997	12	8	5	4
1998	17	13	8	5
1999	20	13	16	13
2000	20	15	8	6
2001	28	13	11	9
2002	29	20	15	15
2003	20	16	11	9
2004	23	17	5	3
2005	23	18	7	7
2006	10	10	7	5
2007	10	8	10	7
2008	11	11	15	11
2009	20	16	11	9
2010	18	14	5	5
2011	13	10	9	5
2012	18	12	6	6
2013	11	11	6	4
2014	32	19	7	6
2015	9	7	8	8
2016	17	14	2	1
2017	15	11	15	9
2018	14	8	17	13
2019	7	3	13	7
2020	24	18	5	3
2021	15	7	8	7

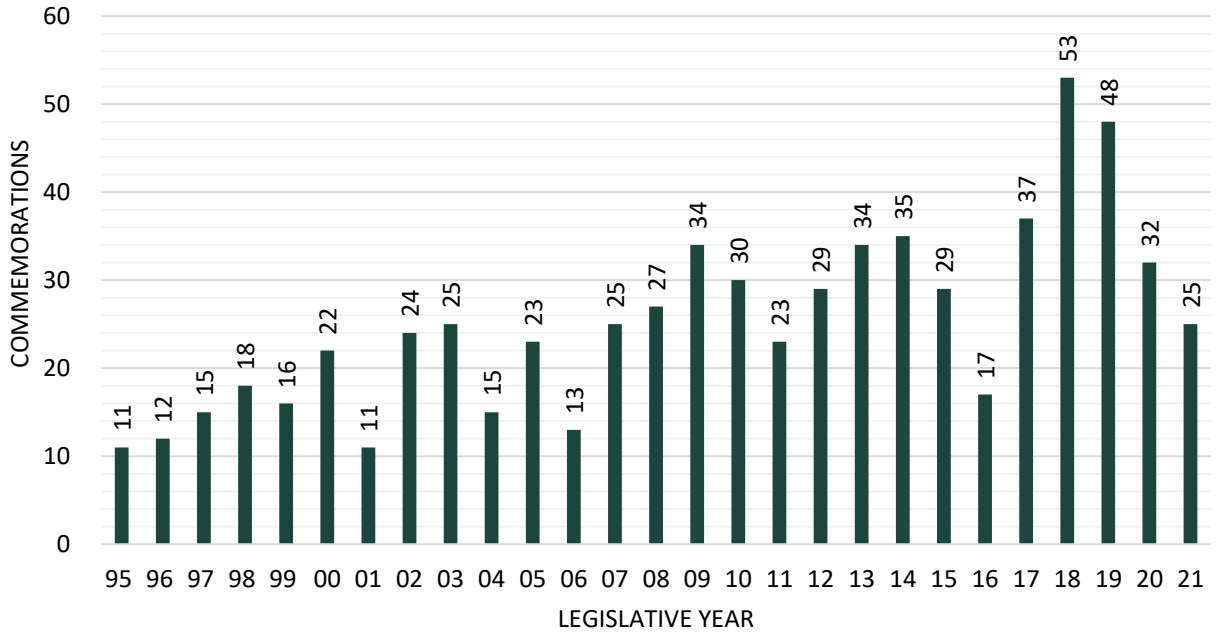
Graph 35
Senate Concurrent Resolutions
Introduced 1991-2021



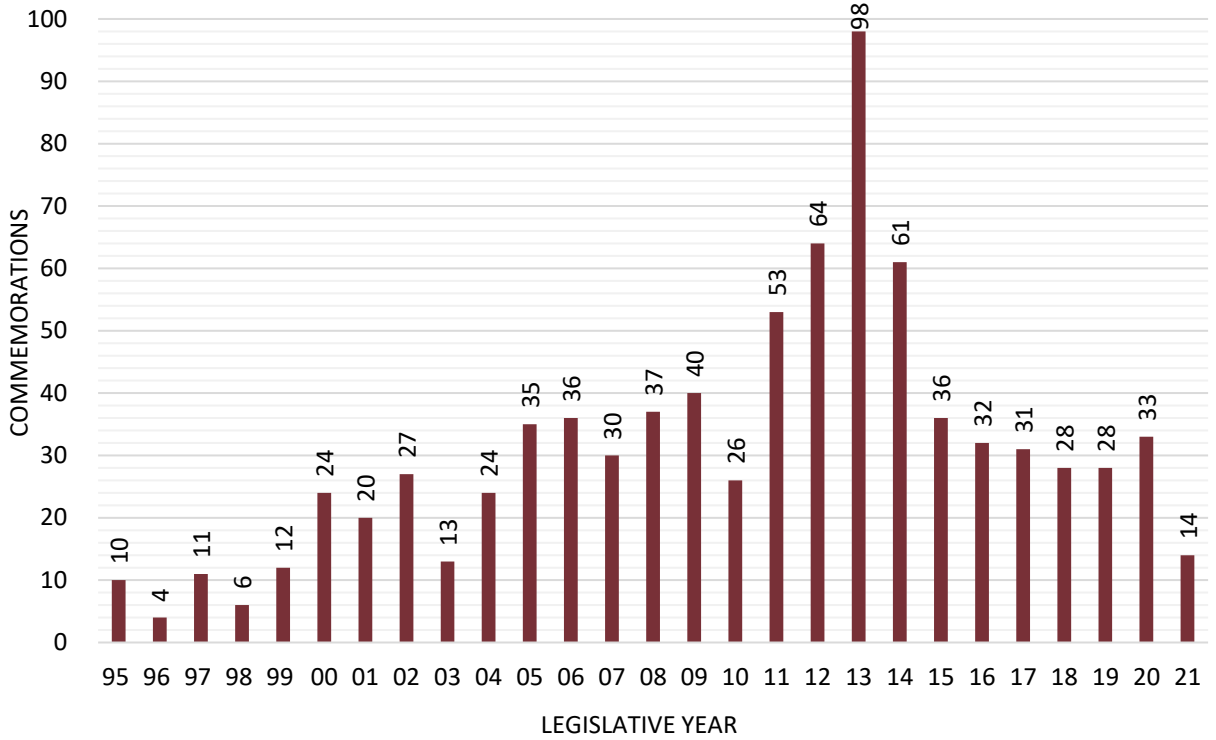
Graph 36
House Concurrent Resolutions
Introduced 1991-2021



Graph 37
Senate Commemorations
Adopted 1995-2021



Graph 38
House Commemorations
Adopted 1995-2021



SPECIAL SESSIONS



SPECIAL SESSIONS

On October 15-17, 1889, the South Dakota Legislature met for the first time in Special Session to organize and elect officers. No bills or resolutions were addressed at that Special Session. Since then the Legislature has met in Special Session 27 times. The most recent Special Session was October 5, 2020. A summary of the number of bills, resolutions, and commemorations addressed by these Special Sessions follows.

Table R
Disposition of Total Bills for All Special Sessions

Session	Introduced	Delivered	Enacted	Percent Enacted
February 8-11, 1916	6	3	3	50.0%
March 18-23, 1918	68	58	58	85.3%
December 2-4, 1919	0	0	0	0.0%
June 21-29, 1920	132	88	88	66.7%
June 22-July 1, 1927	40	21	21	52.5%
July 31-August 5, 1933	59	20	20	33.9%
December 21-24, 1936	14	3	3	21.4%
July 10-12, 1944	7	5	5	71.4%
February 6-16, 1950	40	21	21	52.5%
May 18, 1981	5	1	1	20.0%
September 23-24, 1981	8	4	4	50.0%
May 2-3, 1984	2	1	1	50.0%
July 16, 1987	3	3	3	100.0%
October 3, 1991	6	2	2	33.3%
November 26, 1991	2	2	2	100.0%
May 25, 1993	5	4	4	80.0%
July 11-12, 1994	12	4	4	33.3%
September 9, 1994	25	18	16	64.0%
April 14, 1997	2	1	1	50.0%
December 28-29, 2000	4	3	3	75.0%
October 23-24, 2001	2	2	2	100.0%
June 26-27, 2003	5	3	3	60.0%
October 14, 2005	1	1	1	100.0%
October 24, 2011	2	2	2	100.0%
June 12, 2017	1	1	1	100.0%
September 12, 2018	3	3	3	100.0%
October 5, 2020	1	1	1	100.0%
TOTAL BILLS	455	275	273	60.0%

Table S
Disposition of Senate Bills for All Special Sessions

Session	Introduced	Delivered	Enacted	Percent Enacted
February 8-11, 1916	2	2	2	100.00%
March 18-23, 1918	37	35	35	94.59%
December 2-4, 1919	0	0	0	0.00%
June 21-29, 1920	71	45	45	63.38%
June 22-July 1, 1927	24	15	15	62.50%
July 31-August 5, 1933	22	9	9	40.91%
December 21-24, 1936	5	2	2	40.00%
July 10-12, 1944	4	3	3	75.00%
February 6-16, 1950	12	10	10	83.33%
May 18, 1981	2	1	1	50.00%
September 23-24, 1981	4	1	1	25.00%
May 2-3, 1984	1	1	1	100.00%
July 16, 1987	2	2	2	100.00%
October 3, 1991	3	2	2	66.67%
November 26, 1991	2	2	2	100.00%
May 25, 1993	3	3	3	100.00%
July 11-12, 1994	3	1	1	33.33%
September 9, 1994	22	18	16	72.73%
April 14, 1997	1	0	0	0.00%
December 28-29, 2000	3	3	3	100.00%
October 23-24, 2001	1	1	1	100.00%
June 26-27, 2003	3	2	2	66.67%
October 14, 2005	0	0	0	0.00%
October 24, 2011	0	0	0	0.00%
June 12, 2017	0	0	0	0.00%
September 12, 2018	2	2	2	100.00%
October 5, 2020	0	0	0	0.00%
TOTAL BILLS	229	160	158	69.00%

Table T
Disposition of House Bills for All Special Sessions

Session	Introduced	Delivered	Enacted	Percent Enacted
February 8-11, 1916	4	1	1	25.00%
March 18-23, 1918	31	23	23	74.19%
December 2-4, 1919	0	0	0	0.00%
June 21-29, 1920	61	43	43	70.49%
June 22-July 1, 1927	16	6	6	37.50%
July 31-August 5, 1933	37	11	11	29.73%
December 21-24, 1936	9	1	1	11.11%
July 10-12, 1944	3	2	2	66.67%
February 6-16, 1950	28	11	11	39.29%
May 18, 1981	3	0	0	0.00%
September 23-24, 1981	4	3	3	75.00%
May 2-3, 1984	1	0	0	0.00%
July 16, 1987	1	1	1	100.00%
October 3, 1991	3	0	0	0.00%
November 26, 1991	0	0	0	0.00%
May 25, 1993	2	1	1	50.00%
July 11-12, 1994	9	3	3	33.33%
September 9, 1994	3	0	0	0.00%
April 14, 1997	1	1	1	100.00%
December 28-29, 2000	1	0	0	0.00%
October 23-24, 2001	1	1	1	100.00%
June 26-27, 2003	2	1	1	50.00%
October 14, 2005	1	1	1	100.00%
October 24, 2011	2	2	2	100.00%
June 12, 2017	1	1	1	100.00%
September 12, 2018	1	1	1	100.00%
October 5, 2020	1	1	1	100.00%
TOTAL BILLS	226	115	115	50.88%

Table U
Disposition of Resolutions and Commemorations for All Special Sessions

Session	House Joint Resolutions		Senate Joint Resolutions	
	(Introduced)	(Adopted)	(Introduced)	(Adopted)
February 8-11, 1916	1	0	2	0
March 18-23, 1918	2	2	7	6
December 2-4, 1919	1	1	0	0
June 21-29, 1920	2	1	3	2
June 22-July 1, 1927	0	0	1	1
July 31-August 5, 1933	2	0	0	0
December 21-24, 1936	1	0	0	0
July 10-12, 1944	0	0	0	0
February 6-16, 1950	0	0	1	1
May 18, 198	0	0	0	0
September 23-24, 1981	0	0	0	0
May 2-3, 1984	0	0	0	0
July 16, 1987	0	0	0	0
October 3, 1991	0	0	0	0
November 26, 1991	0	0	0	0
May 25, 1993	0	0	0	0
July 11-12, 1994	1	0	5	1
September 9, 1994	0	0	0	0
April 14, 1997	0	0	0	0
December 28-29, 2000	1	0	1	1
October 23-24, 2001	0	0	0	0
June 26-27, 2003	0	0	0	0
October 14, 2005	0	0	0	0
October 24, 2011	0	0	0	0
June 12, 2017	0	0	0	0
September 12, 2018	0	0	0	0
October 5, 2020	0	0	0	0

Session	House Concurrent Resolutions		Senate Concurrent Resolutions	
	(Introduced)	(Adopted)	(Introduced)	(Adopted)
February 8-11, 1916	0	0	0	0
March 18-23, 1918	1	1	0	0
December 2-4, 1919	0	0	0	0
June 21-29, 1920	0	0	0	0
June 22-July 1, 1927	3	2	5	4
July 31-August 5, 1933	2	1	7	4
December 21-24, 1936	1	1	1	1
July 10-12, 1944	1	1	0	0
February 6-16, 1950	0	0	2	2
May 18, 198	0	0	1	0
September 23-24, 1981	0	0	0	0
May 2-3, 1984	0	0	0	0

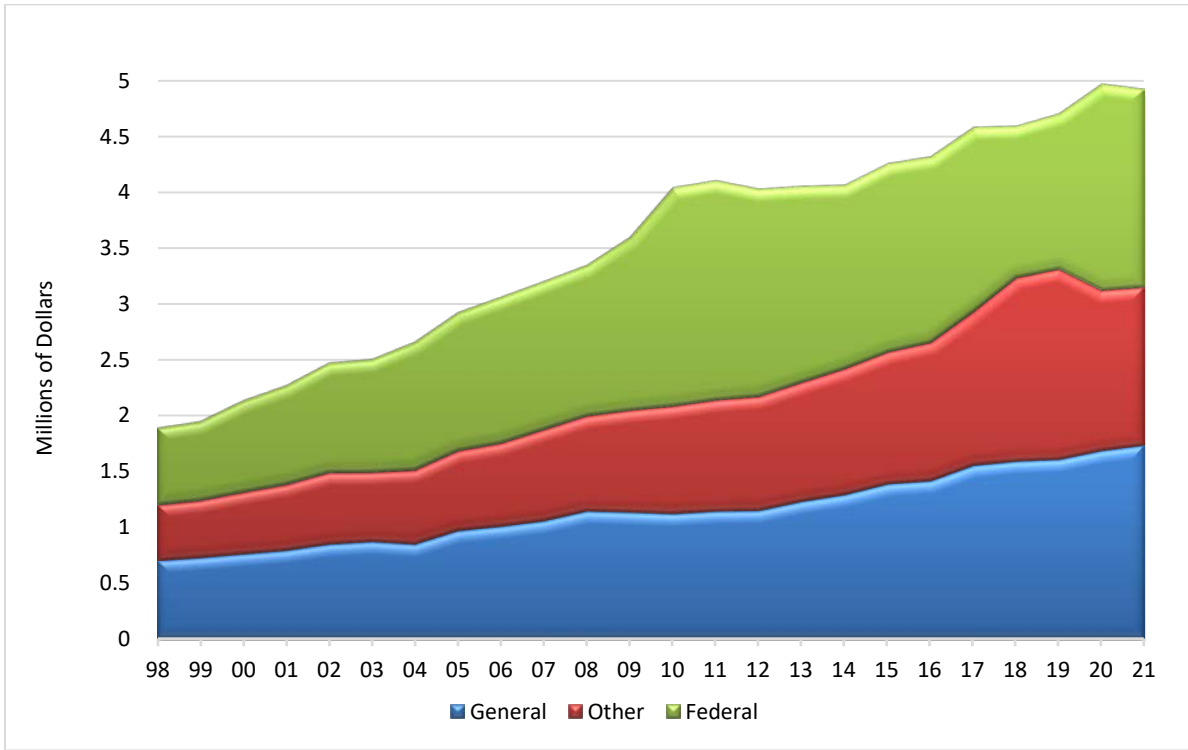
July 16, 1987	0	0	1	0
October 3, 1991	0	0	0	0
November 26, 1991	0	0	0	0
May 25, 1993	1	1	1	1
July 11-12, 1994	1	0	2	0
September 9, 1994	0	0	0	0
April 14, 1997	0	0	2	2
December 28-29, 2000	0	0	0	0
October 23-24, 2001	0	0	0	0
June 26-27, 2003	0	0	0	0
October 14, 2005	0	0	0	0
October 24, 2011	0	0	0	0
June 12, 2017	1	0	1	0
September 12, 2018	0	0	0	0
October 5, 2020	0	0	1	1

Session	House Commemorations		Senate Commemorations	
	(Introduced)	(Adopted)	(Introduced)	(Adopted)
May 25, 1993	1	1	8	8

GENERAL APPROPRIATIONS ACT



Graph 39
General Appropriations Act
Funds Appropriated (FY 1998-FY 2021)



Graph 40
General Appropriations Act
Funds Appropriated (FY 2010-FY 2021)

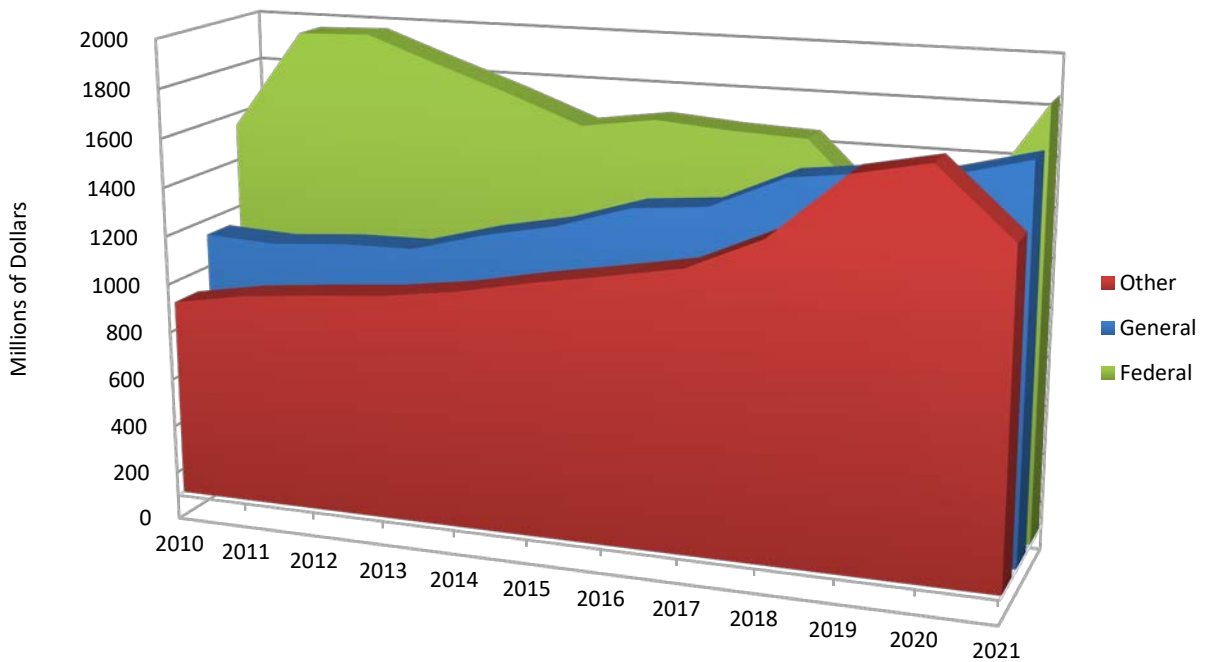


Table V
General Appropriations Act
General Funds Appropriated (FY 1891-FY 1967)

Fiscal Year	General Fund Appropriations	Fiscal Year	General Fund Appropriations
-1891	\$438,708	1930-1931	\$7,290,854
1892-1893	745,059	1932-1933	6,851,843
1894-1895	834,469	1934-1935	5,044,013
1896-1897	744,262	1936-1937	5,102,501
1898-1899	763,882	1938-1939	5,596,817
1900-1901	879,650	1940-1941	5,670,070
1902-1903	1,017,170	1942-1943	6,039,180
1904-1905	1,265,450	1944-1945	7,020,940
1906-1907	1,050,575	1946-1947	7,901,170
1908-1909	1,639,344	1948-1949	10,335,475
1910-1911	1,906,314	1950-1951	14,440,615
1912-1913	2,199,597	1952-1953	17,972,740
1914-1915	2,753,410	1954-1955	21,479,406
1918-1919	3,400,300	1956-1957	24,924,600
1920-1921	5,100,976	1958-1959	33,163,627
1922-1923	6,394,929	1960-1961	33,594,102
1924-1925	7,110,522	1962-1963	40,889,600
1926-1927	7,953,925	1964-1965	49,588,678
1928-1929	6,776,270	1966-1967	108,858,642

Table W
General Appropriations Act
Funds Appropriated (FY 1968-FY 2021)

Fiscal Year	General Funds	Federal Funds	Other Funds ^a	Total
1968	\$52,318,612		\$42,818,964	\$95,137,576
1969	56,553,197		42,670,524	99,223,721
1970	75,377,063		49,483,418	124,860,481
1971	85,410,636		54,137,622	139,548,258
1972	100,987,933		46,774,067	147,762,000
1973	94,217,112		63,790,619	158,007,731
1974	105,404,780		71,055,716	176,460,496
1975	130,101,700		93,082,400	223,184,100
1976	148,747,700		125,828,300	274,576,000
1977	163,685,800		154,329,400	318,015,200
1978	153,862,799	\$191,925,281	111,177,955	456,966,035
1979	176,299,795	240,039,748	145,566,581	561,906,124
1980	147,504,470	253,637,640	170,063,909	571,206,019
1981	161,579,669	273,438,254	197,037,538	632,055,461
1982	172,055,756	324,559,669	208,445,374	705,060,799
1983	174,377,043	295,722,215	221,118,937	691,218,195
1984	178,149,248	308,617,414	222,855,037	709,621,699
1985	203,429,282	338,965,476	212,456,096	754,850,854
1986	218,843,480	377,829,496	223,998,297	820,671,273
1987	232,845,386	381,152,332	228,240,097	842,237,815
1988	235,122,964	396,346,231	238,721,107	870,190,302
1989	341,853,799	441,632,933	259,720,365	1,043,207,097
1990	400,539,825	456,939,983	300,891,200	1,158,371,008
1991	436,265,445	495,258,267	308,111,741	1,239,635,453
1992	497,950,803	549,288,025	340,385,723	1,387,624,551
1993	541,403,005	592,713,816	368,246,018	1,502,362,839
1994	574,337,802	655,065,237	399,060,914	1,628,463,953
1995	580,668,969	683,964,694	464,718,521	1,729,352,184
1996	596,260,942	713,544,777	483,608,506	1,793,414,225
1997	639,791,721	667,483,365	507,367,301	1,814,642,387
1998	703,876,993	688,495,268	502,892,326	1,895,264,587
1999	731,018,441	707,629,986	515,827,961	1,954,476,388
2000 ^b	764,532,081	819,370,030	556,321,464	2,140,223,575
2001 ^c	795,761,825	885,378,868	594,092,873	2,275,233,566
2002 ^d	850,885,481	982,560,790	644,360,962	2,477,807,233
2003	875,000,575	1,011,530,371	622,670,776	2,509,201,722
2004 ^e	851,277,150	1,146,903,515	667,333,054	2,665,513,719
2005 ^f	971,660,743	1,237,233,507	719,318,733	2,928,212,983
2006 ^g	1,009,980,027	1,307,008,887	748,493,050	3,065,481,964
2007 ^h	1,059,223,960	1,327,151,561	820,045,557	3,206,421,078
2008 ⁱ	1,146,522,479	1,349,933,464	855,452,511	3,351,908,454
2009 ^j	1,136,187,623	1,548,760,210	915,205,715	3,600,153,548
2010 ^k	1,122,304,350	1,953,994,975	967,541,956	4,043,841,281

Fiscal Year	General Funds	Federal Funds	Other Funds ^a	Total
2011 ^l	\$1,145,662,738	\$1,963,509,180	\$998,519,418	\$4,107,691,336
2012 ^m	1,150,867,146	1,857,203,151	1,024,674,756	4,032,745,053
2013 ⁿ	1,232,361,618	1,754,950,330	1,068,340,191	4,055,652,139
2014 ^o	1,293,068,278	1,643,807,414	1,130,054,687	4,066,930,379
2015 ^p	1,372,395,933	1,679,576,551	1,225,264,238	4,277,236,722
2016 ^q	1,417,040,757	1,663,511,772	1,240,272,297	4,320,824,826
2017 ^r	1,554,021,368	1,651,067,371	1,377,780,256	4,582,868,995
2018 ^s	1,591,226,544	1,643,804,785	1,357,707,611	4,592,738,940
2019 ^t	1,607,249,152	1,705,999,448	1,390,009,997	4,703,258,597
2020 ^u	1,686,448,082	1,847,335,160	1,437,019,922	4,970,803,164
2021 ^v	1,734,513,310	1,769,897,110	1,419,515,498	4,923,925,918
2022 ^w	1,630,524,943	1,821,381,713	1,438,901,483	4,890,808,139

- a. Includes federal funds in FY 1968 through FY 1977
- b. FY 2000 General Appropriations Act was amended by the 2000 Legislature to increase General Funds from \$750,858,528 to \$764,532,081, an increase of \$13,673,553.
- c. FY 2001 General Appropriations Act was amended by the 2001 Legislature to increase General Funds by \$1,351,120 from \$794,410,705 to \$795,761,825 and to increase Other Funds by \$2,600,000 from \$591,492,873 to \$594,092,873
- d. FY 2002 General Appropriations Act was amended by the 2002 Legislature to increase General Funds by \$1,487,000 from \$849,398,481 to \$850,885,481, to increase Other Funds by \$1,122,447 from \$643,238,515 to \$644,360,962, and to increase Federal Funds by \$587,000 from \$981,973,790 to \$982,560,790.
- e. FY 2004 General Appropriations Act was amended by the 2003 Legislature during its Special Session to increase appropriations by \$5,516,355 from all funds. This included \$500,000 from General Funds, \$500,000 from Other Funds, and \$4,515,355 from Federal Funds. The 2004 Legislature further amended the FY2004 General Appropriations Act by reducing appropriations by a net \$28,385,663 from all funds. This included a reduction of \$52,484,358 from General Funds and an increase of \$24,098,695 from Federal Funds.
- f. FY 2005 General Appropriations Act was amended by the 2005 Legislature by increasing appropriations by a net \$17,421,607 from all funds. This included \$633,125 from the General Funds, \$3,258,732 from Federal Funds, and \$13,529,750 from Other Funds. A total of \$3,105,043 from all funds was reappropriated from FY 2004 to FY 2005.
- g. FY 2006 General Appropriations Act was amended by the 2006 Legislature by increasing appropriations by \$9,562,768 from all funds. This included \$1,208,296 from General Funds, \$4,708,072 from Federal Funds, and \$3,646,400 from Other Funds.
- h. FY 2007 General Appropriations Act was amended by the 2007 Legislature by increasing appropriations by \$19,551,896 from all funds. This included \$1,114,638 from General Funds, \$2,017,458 from Federal Funds, and \$16,419,800 from Other Funds.
- i. FY 2008 General Appropriations Act was amended by the 2008 Legislature by increasing appropriations by \$11,824,064 from all funds. This included an increase of \$8,807,605 from General Funds, \$3,820,000 from Federal Funds, and a decrease of \$803,541 in Other Funds.
- j. FY 2009 General Appropriations Act was amended by the 2009 Legislature by increasing appropriations by \$51,445,062 from all funds. This included an increase of \$117,910,306 from federal stimulus funding, an increase of \$125,000 from non-stimulus federal funding; an increase of \$5,007,393 from Other Funds; and a decrease of \$71,597,637 from General Funds.
- k. FY2010 General Appropriations Act was amended in 2010 with an increase of \$124,278,690 from all funds. This included a decrease of \$5,515,119 from General Funds, an increase of \$100,921,999 from Federal Funds, and an increase of \$28,871,810 from Other Funds.
- l. FY 2011 General Appropriations Act was amended in 2011 with an increase of \$43,617,148 from all funds. This included a decrease of \$5,743,913 from General Funds, an increase of \$32,774,232 from Federal Funds, and an increase of \$26,586,829 from Other Funds.
- m. FY 2012 General Appropriations Act was amended in 2012 by two separate pieces of legislation, SB 48 and HB 1137 appropriated an additional \$30,779,066 in General Funds, \$7,568,280 in Federal Funds, and \$25,016,351 in Other Funds. Additionally, the Legislature approved a transfer of \$1,000,000 from the General Fund to the Cement Plant Retirement Fund and transfer of \$5,000,000 from the General Fund to the Railroad Trust Fund.
- n. FY 2013 General Appropriations Act was amended in 2013 by two separate pieces of legislation. SB 90 and HB 1060 appropriated an additional \$23,311,489 in General Funds, \$4,610,380 in Federal Funds, and \$21,444,473 in Other Funds. Additionally, the Legislature approved transfers from the General Fund of \$2,000,000 to the South Dakota Cement Plant Retirement Fund, \$500,000 for Research Commerce Grants, \$2,000,000 for Future Fund Grants, and \$1,000,000 to the Tobacco Reduction and Prevention Fund.
- o. FY 2014 General Appropriations Act was amended in 2014 by HB 1040 which reduced the General Fund appropriation by \$19,515,229 reduced the Federal Fund appropriation by \$34,287,743 and increased the other fund spending authority by \$13,718,844. The reductions were the result of lower Medicaid numbers, lower state aid to education figures, and the establishment of a contingency fund for the Medicaid program (SB 177).

- p. FY 2015 General Appropriations Act was amended in 2015 by SB 55 which reduced the General Fund appropriation by \$16,560,657, reduced the Federal Fund appropriation by \$ 3,872,289, and increased the other fund spending authority by \$38,977,625.
- q. FY 2016 General Appropriations Act was amended in 2016 by SB48 which reduced the General Fund appropriation by \$12,949,699, reduced the Federal fund appropriation by \$3,435,906, and increased the other fund spending authority by \$6,747,644.
- r. FY 2017 General Appropriations Act was amended in 2017 by SB32 which reduced the General Fund appropriation by \$40,961,553, reduced the Federal fund appropriation by \$4,268,346, and increased the other fund spending authority by \$7,596,525.
- s. FY 2018 General Appropriations Act was amended in 2018 by HB 1044 which increased the General Fund appropriations by \$6,112,918, increased the Federal Fund appropriations by \$9,530,782 and increased the other fund spending authority by \$19,894,371. Additionally, the FY 2018 General appropriations Act included a transfer from the State General Fund for \$1,615,000 to the State Animal Disease Research and Diagnostic Laboratory Bond Redemption and Operations Fund. FY 2018 General Appropriations Act also includes two transfers out of the State General Fund: 1) \$3,350,000 to the State Animal Disease Research and Diagnostic Laboratory Bond Redemption and Operations Fund; and 2) \$900,000 to the Precision Agriculture Fund.
- t. FY 2019 General Appropriations Act was amended in 2019 by SB 180 which includes two transfers out of the State General Fund: 1) \$5,000,000 to the Rural Broadband Fund; and 2) \$4,620,920 to the Radio Communication Fund.
- u. FY 2020 General Appropriations Act was amended in 2020 by SB 193, which revises SB 38, an act to revise the General Appropriations Act for fiscal year 2020. SB 38, previously enacted by the 2020 Legislature, amended the FY 2020 General Appropriations Act and FY 2020 General Fund receipts as approved by the 2019 Legislature. For FY 2020, the enrolled version of SB 193 creates an increase of \$89,644,852 in Federal Fund authority.
- v. FY 2021 General Appropriations Act was amended in 2021 by SB 64.
- w. FY 2022 General Appropriations Act was enacted in 2021 by SB 195.

**This book was printed by the
Legislative Research Council at the cost of \$7.25 per book.**

Legislative Research Council
500 E Capitol Avenue
Pierre, SD 57501
605-773-3251
Website: SDLegislature.gov

