

JOINT COMMITTEE ON APPROPRIATIONS

FY26 BUDGET HEARING



BLACK HILLS

STATE UNIVERSITY

BHSU STUDENT PROFILE

- 3,346 Students
- 67% Students are from South Dakota
- 1,200 Students are from West River
- 32% Students are Pell Eligible



PREPARING STUDENTS FOR THE WORKFORCE

- Placement Rates
- Internships & Undergraduate Research
- FY24 Graduates

PLACEMENT RATE

Grad Date	Placement Rate
Spring 2023	90%
Fall 2023	92%
Spring 2024	94%

INTERNSHIP NUMBERS

346 Internships were completed in FY24

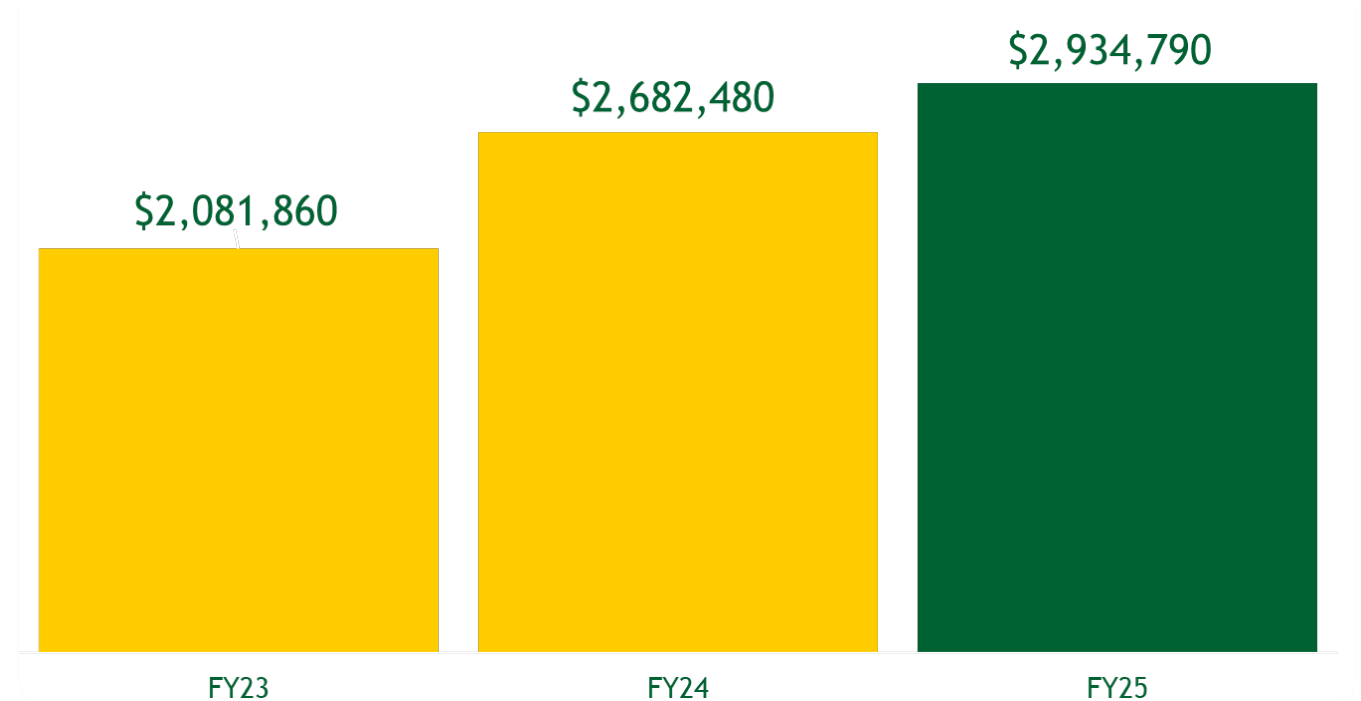
FY24 GRADUATES

Degree	Count	% of Total Grads
Business	96	22%
Teacher Education	83	19%
Biomedical Sciences	42	10%



AFFORDABILITY

**Increased Foundation
Scholarship Awards**



(+ Affordable Tuition = Decreased Debt Load for Graduates)

INSTITUTIONAL EFFECTIVENESS

- Strategic Enrollment Planning
- Academic Program Alignment
- Operational Efficiencies



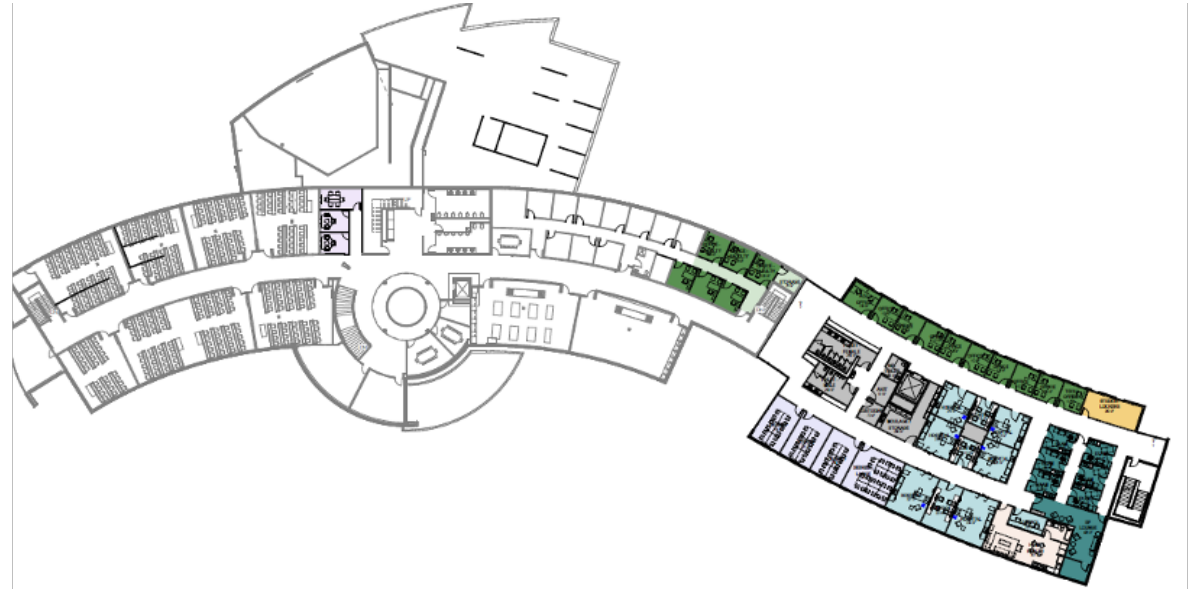
REGIONAL PARTNERSHIPS



BHSU – Rapid City

Monument West River Health Science Center Addition & Renovation

- BHSU & SDSU Partnership in Rapid City (Consolidates all West River Nursing)
- \$16.6 Million; 30,000 GSF Addition (Completion planned for Fall 2025)



CENTER FOR CIVIC ENGAGEMENT

The Center for Civic Engagement will:

- Develop and Provide Curricula and Programs
- Sponsor and Host Civic-Focused Events
- Provide Experiential Learning Opportunities
- Provide Civic Programming

Activities to Date:

- Hired Consultant and Director of the Center for Civic Engagement
- Hosted inaugural Center for Civic Engagement events at BHSU & SDSU
- Developed a civics graduation requirement
- Showcased the statewide "We the People" civics event
- Developed the [BHSU Civics Website](#)



THANK YOU



BLACK HILLS
STATE UNIVERSITY