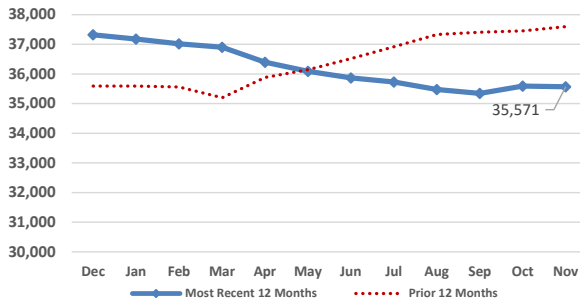


# Medical Services Data and Trends

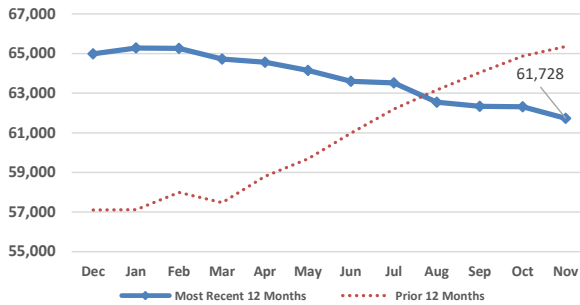
November 2025



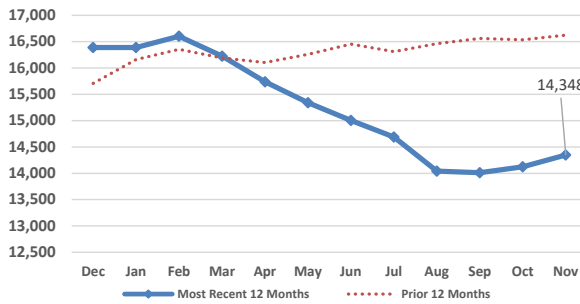
Adult Base Medicaid Enrollment



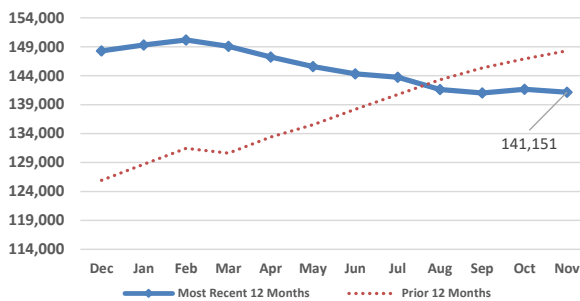
Child Medicaid Enrollment



CHIP Enrollment



Total Medical Services Enrollment



Monthly Enrollment Data

| Eligibility Category      | Enrollees      | Monthly Change | Yearly Change  |
|---------------------------|----------------|----------------|----------------|
| Aged Adults               | 10,209         | 6              | 872            |
| Disabled/Blind Adults     | 12,837         | 2              | (959)          |
| Pregnant Women            | 2,637          | 14             | (120)          |
| Parents/Caretaker/Other   | 9,888          | (45)           | (1,819)        |
| Medicaid Expansion Adults | 29,504         | (121)          | 778            |
| Medicaid Children         | 61,728         | (582)          | (3,628)        |
| CHIP Children             | 14,348         | 223            | (2,276)        |
| <b>Total Enrollees</b>    | <b>141,151</b> | <b>(503)</b>   | <b>(7,152)</b> |

Monthly Expenditure Data

|                                 | Medicaid      | CHIP        | Total         |
|---------------------------------|---------------|-------------|---------------|
| Enrollees                       | 97,299        | 14,348      | 111,647       |
| Accessed Care*                  | 50,653        | 6,333       | 56,986        |
| Accessed Care as % of Enrollees | 52%           | 44%         | 51%           |
| Expenditures**                  | \$112,813,279 | \$4,233,233 | \$117,046,512 |
| Expenditures per Enrollee       | \$1,159       | \$295       | \$1,048       |
| Expenditures per Access         | \$2,227       | \$668       | \$2,054       |

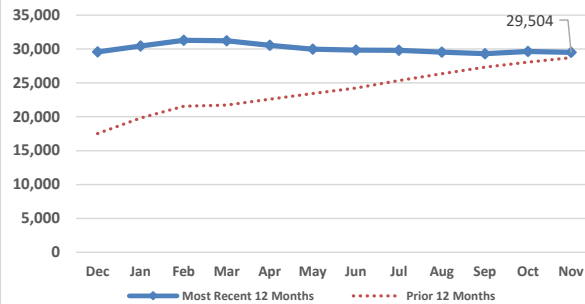
\*The number of enrollees who accessed care while enrolled in Medicaid.

\*\* Does not include premiums for Medicare Part A, Part B, and Part D.

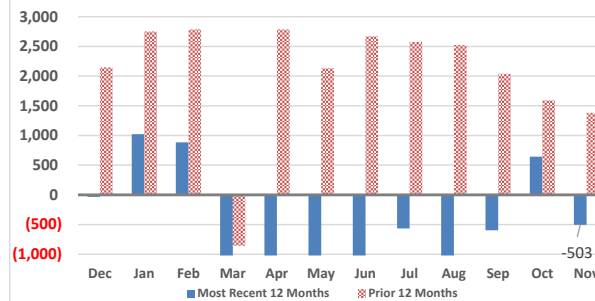
Payments for Medicare Part A, B, & D Premiums

|                            | Part A    | Part B      | Part D      |
|----------------------------|-----------|-------------|-------------|
| Persons                    | 1,666     | 17,003      | 12,054      |
| Payment                    | \$816,275 | \$3,368,106 | \$2,710,328 |
| Average Payment per Person | \$490     | \$198       | \$225       |

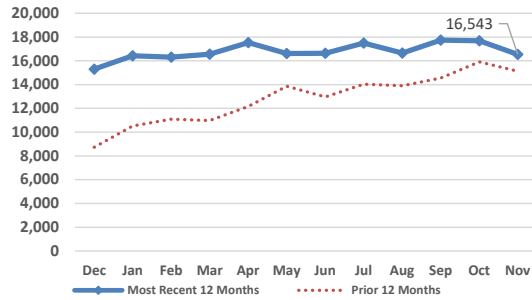
Medicaid Expansion Enrollment



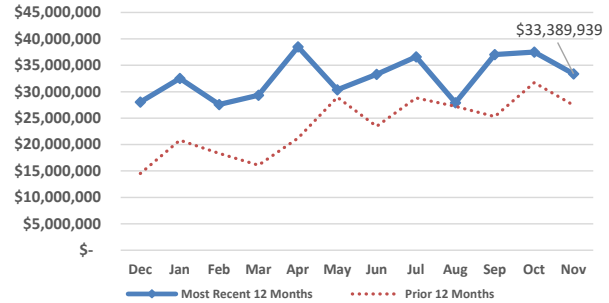
Change in Medical Services Enrollees



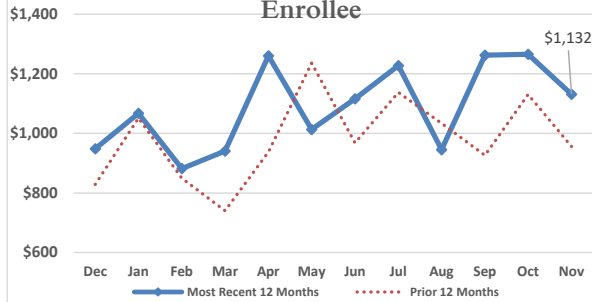
### Medicaid Expansion Access



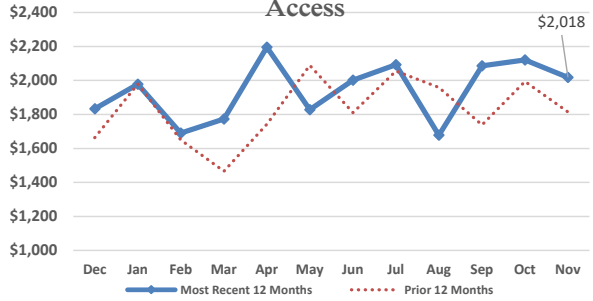
### Medicaid Expansion Expenditures



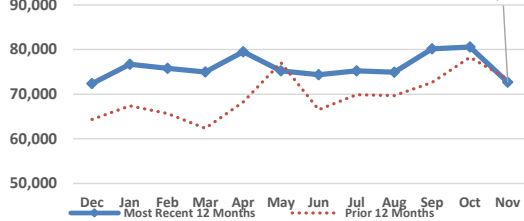
### Medicaid Expansion Expenditures per Enrollee



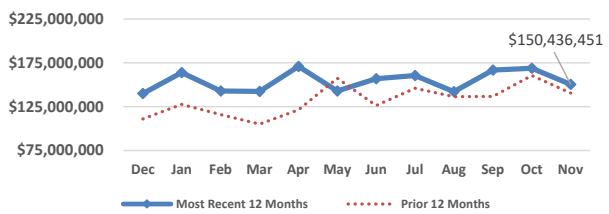
### Medicaid Expansion Expenditures per Access



### Total Medical Services Access



### Total Medical Services Expenditures



### Medicaid Budget

| SFY         | State         | Federal         | Total           |
|-------------|---------------|-----------------|-----------------|
| 2024 Actual | \$465,784,896 | \$1,037,527,352 | \$1,503,312,248 |
| 2025 Actual | \$579,182,019 | \$1,247,901,726 | \$1,827,083,745 |
| 2026 Budget | \$714,669,301 | \$1,337,654,530 | \$2,052,323,831 |

### CHIP Budget

| SFY         | State        | Federal      | Total        |
|-------------|--------------|--------------|--------------|
| 2024 Actual | \$15,275,322 | \$34,118,608 | \$49,393,930 |
| 2025 Actual | \$17,956,127 | \$36,967,285 | \$54,923,412 |
| 2026 Budget | \$17,712,258 | \$34,490,096 | \$52,202,354 |

### Total Medical Services Budget

| SFY         | State         | Federal         | Total           |
|-------------|---------------|-----------------|-----------------|
| 2024 Actual | \$481,060,218 | \$1,071,645,960 | \$1,552,706,178 |
| 2025 Actual | \$597,138,146 | \$1,284,869,011 | \$1,882,007,157 |
| 2026 Budget | \$732,381,559 | \$1,372,144,626 | \$2,104,526,185 |

### Federal Medical Assistance Percentage

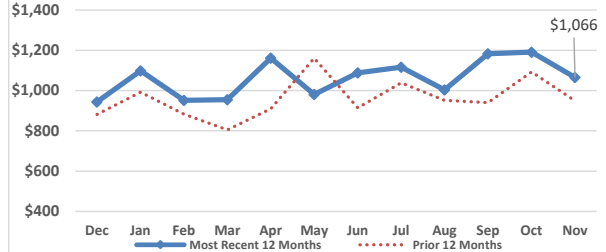
#### Regular FMAP

|         | SFY2024 | SFY2025 | SFY2026 |
|---------|---------|---------|---------|
| Federal | 55.42%  | 53.55%  | 51.53%  |
| State   | 44.58%  | 46.45%  | 48.47%  |

#### CHIP FMAP

|         | SFY2024 | SFY2025 | SFY2026 |
|---------|---------|---------|---------|
| Federal | 68.80%  | 67.15%  | 66.07%  |
| State   | 31.20%  | 32.85%  | 33.93%  |

### Total Expenditures per Enrollee



### Total Expenditures per Access

