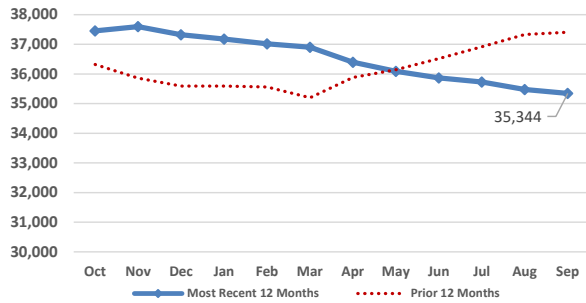


Medical Services Data and Trends

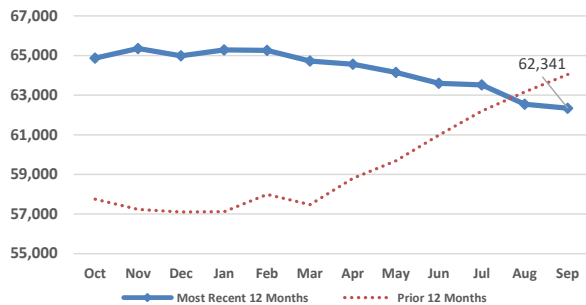
September 2025



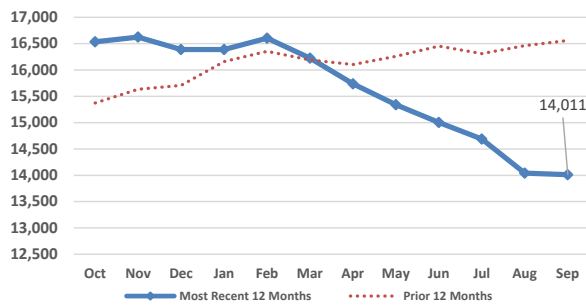
Adult Base Medicaid Enrollment



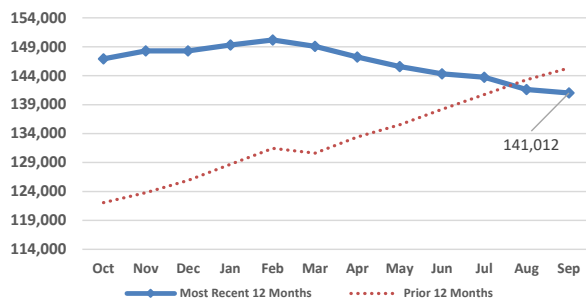
Child Medicaid Enrollment



CHIP Enrollment



Total Medical Services Enrollment



Monthly Enrollment Data

Eligibility Category	Enrollees	Monthly Change	Yearly Change
Aged Adults	10,163	20	966
Disabled/Blind Adults	12,804	(63)	(955)
Pregnant Women	2,565	59	(53)
Parents/Caretaker/Other	9,812	(151)	(2,022)
Medicaid Expansion Adults	29,316	(228)	2,000
Medicaid Children	62,341	(202)	(1,704)
CHIP Children	14,011	(30)	(2,549)
Total Enrollees	141,012	(595)	(4,317)

Monthly Expenditure Data

	Medicaid	CHIP	Total
Enrollees	97,685	14,011	111,696
Accessed Care*	56,099	7,282	63,381
Accessed Care as % of Enrollees	57%	52%	57%
Expenditures**	\$124,459,542	\$5,352,491	\$129,812,033
Expenditures per Enrollee	\$1,274	\$382	\$1,162
Expenditures per Access	\$2,219	\$735	\$2,048

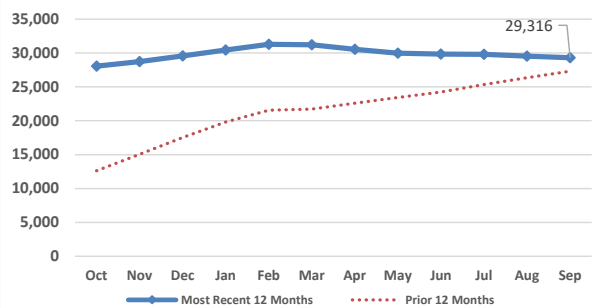
*The number of enrollees who accessed care while enrolled in Medicaid.

** Does not include premiums for Medicare Part A, Part B, and Part D.

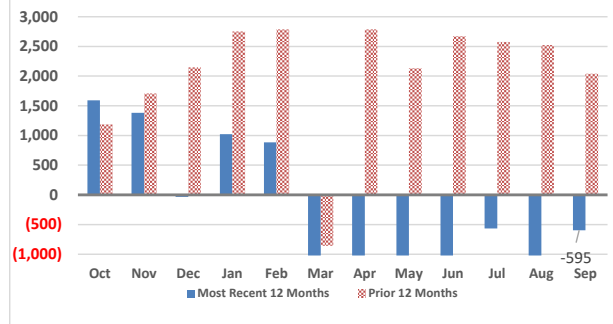
Payments for Medicare Part A, B, & D Premiums

	Part A	Part B	Part D
Persons	1,676	16,948	11,786
Payment	\$843,707	\$3,304,192	\$2,655,139
Average Payment per Person	\$503	\$195	\$225

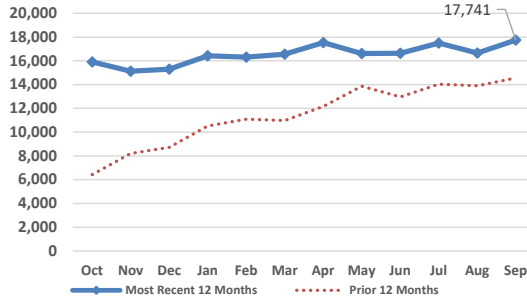
Medicaid Expansion Enrollment



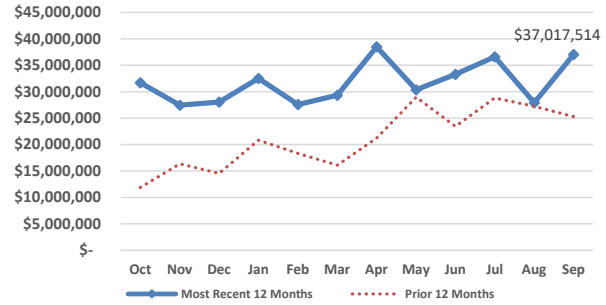
Change in Medical Services Enrollees



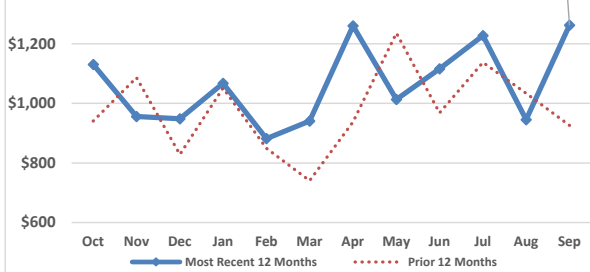
Medicaid Expansion Access



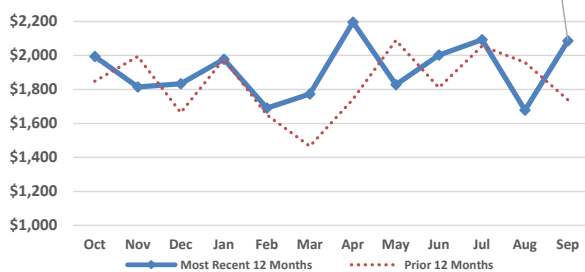
Medicaid Expansion Expenditures



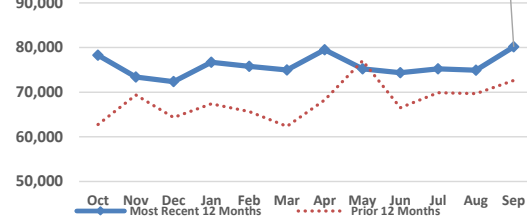
Medicaid Expansion Expenditures per Enrollee



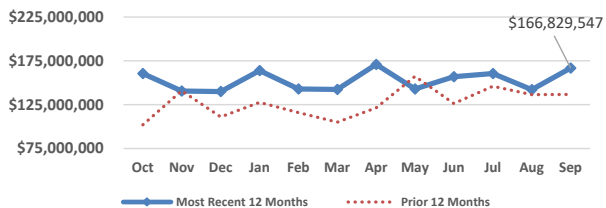
Medicaid Expansion Expenditures per Access



Total Medical Services Access



Total Medical Services Expenditures



Medicaid Budget

SFY	State	Federal	Total
2024 Actual	\$465,784,896	\$1,037,527,352	\$1,503,312,248
2025 Actual	\$579,182,019	\$1,247,901,726	\$1,827,083,745
2026 Budget	\$714,669,301	\$1,337,654,530	\$2,052,323,831

CHIP Budget

SFY	State	Federal	Total
2024 Actual	\$15,275,322	\$34,118,608	\$49,393,930
2025 Actual	\$17,956,127	\$36,967,285	\$54,923,412
2026 Budget	\$17,712,258	\$34,490,096	\$52,202,354

Total Medical Services Budget

SFY	State	Federal	Total
2024 Actual	\$481,060,218	\$1,071,645,960	\$1,552,706,178
2025 Actual	\$597,138,146	\$1,284,869,011	\$1,882,007,157
2026 Budget	\$732,381,559	\$1,372,144,626	\$2,104,526,185

Federal Medical Assistance Percentage

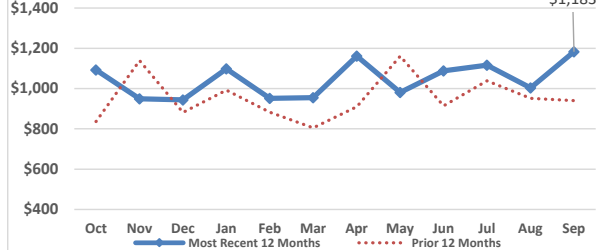
Regular FMAP

	SFY2024	SFY2025	SFY2026
Federal	55.42%	53.55%	51.53%
State	44.58%	46.45%	48.47%

CHIP FMAP

	SFY2024	SFY2025	SFY2026
Federal	68.80%	67.15%	66.07%
State	31.20%	32.85%	33.93%

Total Expenditures per Enrollee



Total Expenditures per Access

