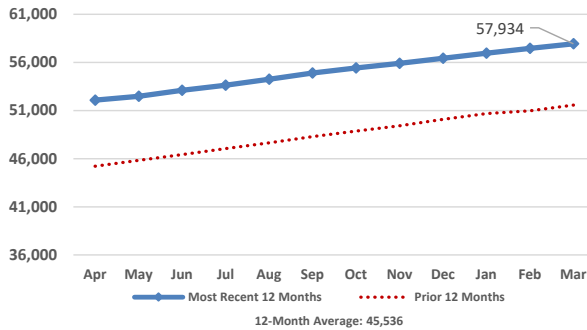


Medical Services Data and Trends

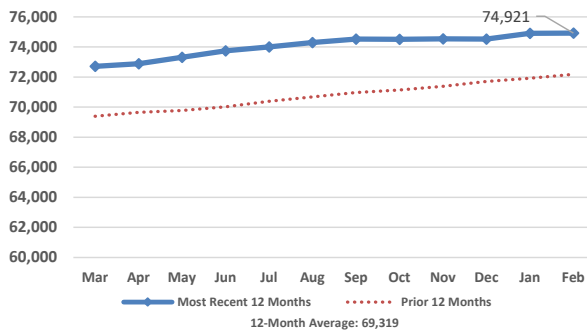
February 2023



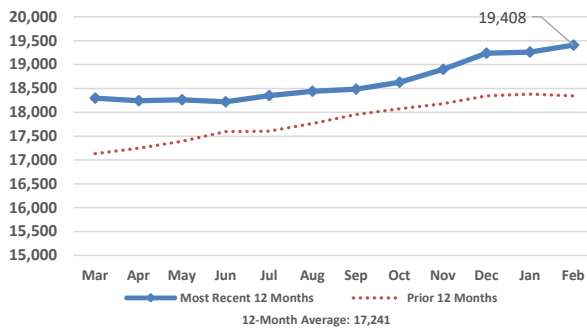
Adult Medicaid Enrollment



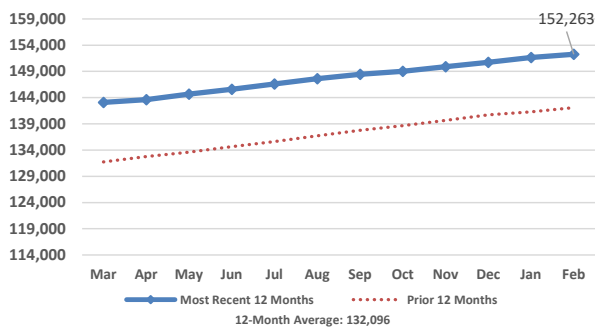
Child Medicaid Enrollment



CHIP Enrollment



Total Medical Services Enrollment



Monthly Enrollment Data

Eligibility Category	Enrollees	Monthly Change	Yearly Change
Aged/Blind Adults	7,692	(1)	268
Disabled Adults	17,041	20	183
Pregnant Women	1,071	21	236
Parents/Caretaker Relatives	25,150	234	3,115
Other Adults	6,980	194	2,565
Medicaid Children	74,921	7	2,739
CHIP Children	19,408	148	1,065
Total Enrollees	152,263	623	10,171

Children who moved from CHIP to Medicaid this month: 322
Children who moved from Medicaid to CHIP this month: 509

Monthly Expenditure Data

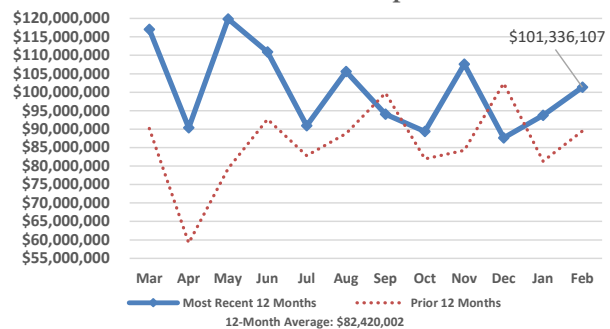
	Medicaid	CHIP	Total
Enrollees	132,855	19,408	152,263
Recipients*	61,499	7,338	68,837
Recipients as % of Enrollees	46%	38%	45%
Expenditures**	\$97,387,459	\$3,948,648	\$101,336,107
Expenditures per Enrollee	\$733	\$203	\$666
Expenditures per Recipient	\$1,584	\$538	\$1,472

*Recipient is an enrolled individual that had at least one medical service paid for during the month.
** Does not include premiums for Medicare Part A, Part B, and Part D.

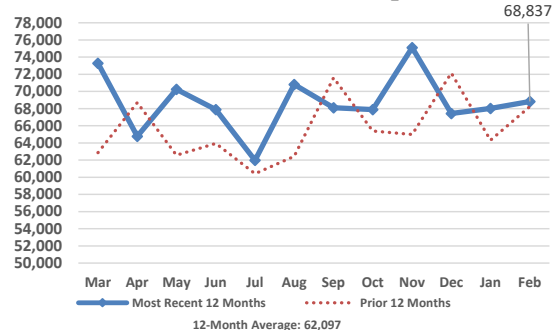
Payments for Medicare Part A, B, & D Premiums

	Part A	Part B	Part D
Persons	1,534	19,464	12,896
Payment	\$748,060	\$3,200,820	\$1,956,380
Average Payment per Person	\$488	\$164	\$152

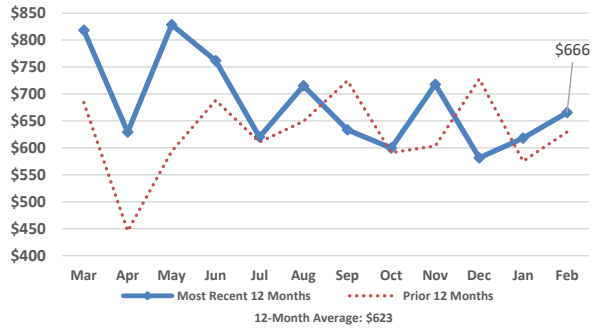
Total Medical Services Expenditures



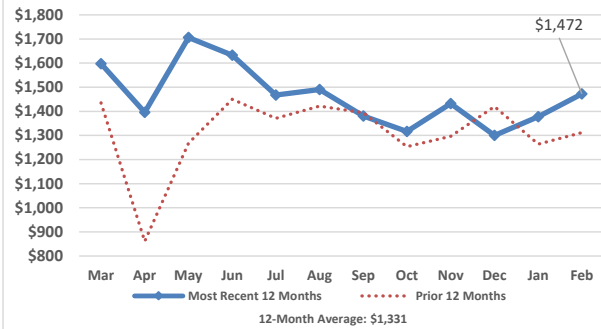
Total Medical Services Recipients



Total Expenditures per Enrollee



Total Expenditures per Recipient



Medicaid Budget

SFY	State	Federal	Total
2021 Actual	\$329,057,240	\$700,305,560	\$1,029,362,800
2022 Actual	\$372,704,332	\$927,421,749	\$1,300,126,081
2023 Budget	\$489,936,399	\$813,917,742	\$1,303,854,141

CHIP Budget

SFY	State	Federal	Total
2021 Actual	\$7,424,433	\$25,877,280	\$33,301,713
2022 Actual	\$9,142,861	\$27,849,678	\$36,992,539
2023 Budget	\$12,195,054	\$28,536,574	\$40,731,628

Total Medical Services Budget

SFY	State	Federal	Total
2021 Actual	\$336,481,673	\$726,182,840	\$1,062,664,513
2022 Actual	\$381,847,193	\$955,271,427	\$1,337,118,620
2023 Budget	\$502,131,453	\$842,454,316	\$1,344,585,769

Federal Medical Assistance Percentage

Regular FMAP

	SFY2021	SFY2022	SFY2023
Federal	58.12%	58.59%	57.23%
State	41.88%	41.41%	42.77%

CHIP FMAP

	SFY2021	SFY2022	SFY2023
Federal	73.56%	71.01%	70.06%
State	26.44%	28.99%	29.94%

Change in Medical Services Enrollees

