

SOUTH DAKOTA DEPARTMENT OF CORRECTIONS



Incarceration Fund Task Force
July 26th, 2022



AGENDA

- Prison Facilities
 - History
 - Setup
 - Programs
 - Cost
 - Staffing
 - Population
- Population Trends
 - 10 year look
- Recidivism
- Recommendations
 - DLR Group Report Recommendations
 - DOC Recommendations
 - Gaps in Services

PRISON FACILITIES

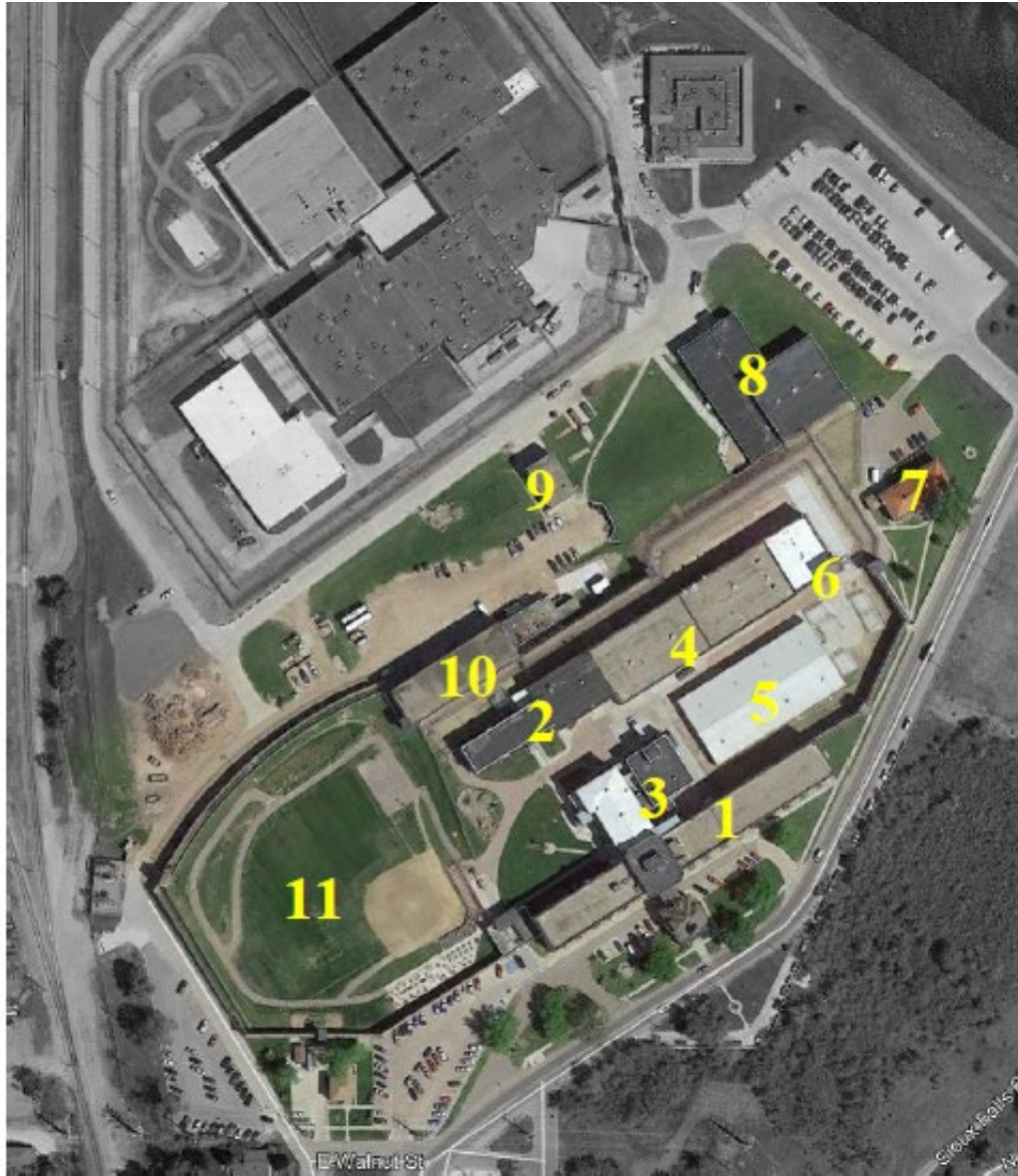


SOUTH DAKOTA STATE PENITENTIARY



- **History:** Constructed as a territorial prison in 1881 and became the state penitentiary in 1889 when SD was granted statehood.
- **Custody:** Houses male, high-medium custody inmates in Sioux Falls
- **Programs:** Education, institutional support, prison industries
- **Cost:** \$29,332,426 (JPA and SDSP are included in same budget center)
- **Staffing:** 170 FTE
- **Inmate Population:** 679

SOUTH DAKOTA STATE PENITENTIARY



1. Hill Housing
2. School
3. Dining, health services, kitchen
4. Pheasantland Industries #1
5. Pheasantland Industries #2
6. Restrictive Housing
7. Training Academy
8. Rec Building
9. Maintenance Building
10. Warehouse
11. Rec Yard

CORRECTIONS

JAMESON PRISON ANNEX (JPA)



- **History:** Main facility opened in 1993, Unit D added in 2006, health services expansion in 2021
- **Custody:** Houses male, high-medium and maximum security offenders on the campus at South Dakota State Penitentiary in Sioux Falls
- **Programs:** Education, mental health, chemical dependency, sex offender treatment
- **Cost:** \$29,332,426 (JPA and SDSP are included in same budget center)
- **Staffing:** 143 FTE
- **Inmate Population:** 512

JAMESON PRISON ANNEX (JPA)



1. Housing units
2. Production Building

CORRECTIONS

SIoux FALLS MINIMUM CENTER



- **History:** Constructed at the same time as JPA and opened in 1993
- **Custody:** Houses male, minimum custody offenders on the campus at South Dakota State Penitentiary in Sioux Falls
- **Programs:** Work release, community service, institutional support
- **Cost:** \$1,547,286
- **Staffing:** 14 FTE
- **Inmate Population:** 92

STYX FALLS MINIMUM CENTER



1. Housing unit

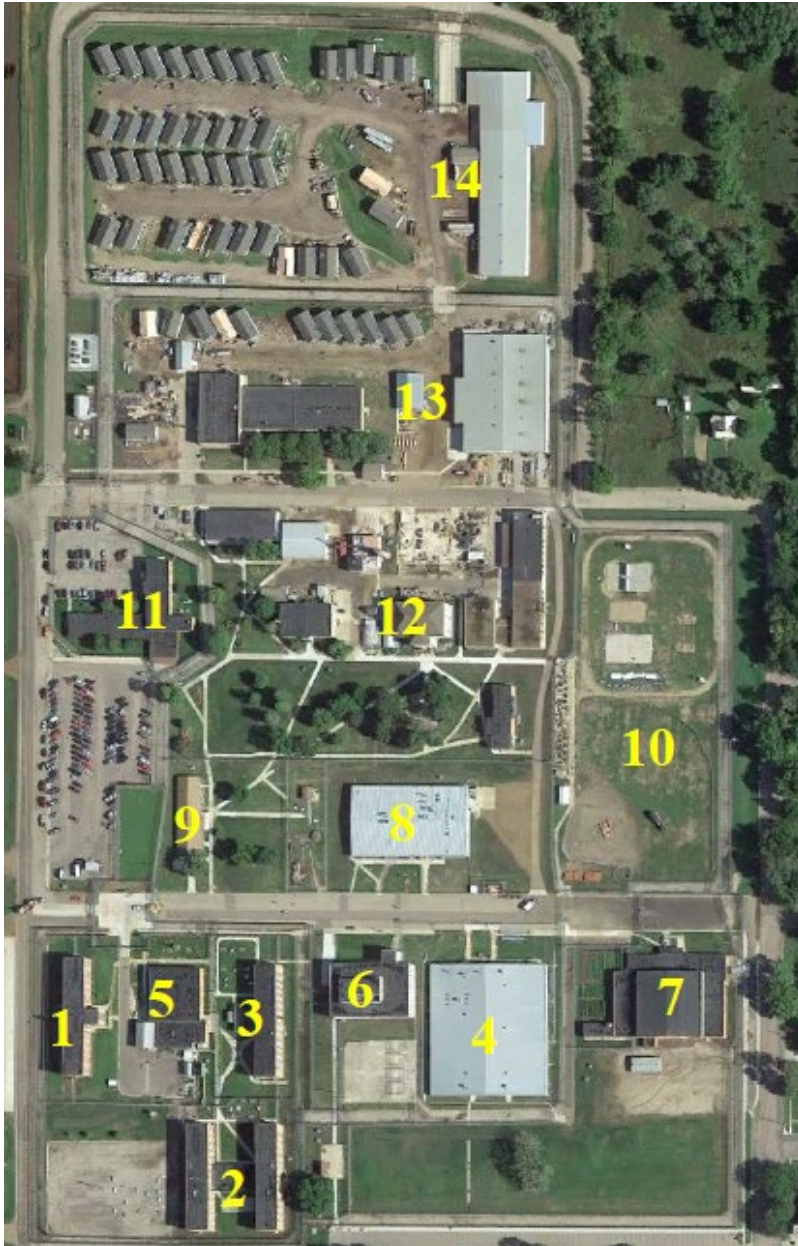
CORRECTIONS

MIKE DURFEE STATE PRISON



- **History:** Originally designed and constructed as the Southern State Normal School in 1881; changed to USD at Springfield until it closed in 1984. Repurposed as female facility in 1984; became co-ed in 1985; transitioned to all-male facility in 1997.
- **Custody:** Houses male, low-medium custody offenders in Springfield
- **Programs:** Education, vocational, prison industries, chemical dependency, sex offender treatment
- **Cost:** \$17,044,493
- **Staffing:** 154 FTE Staffing analysis underway
- **Inmate Population:** 1,028

MIKE DURFEE STATE PRISON



1. Housing
2. Housing
3. Housing
4. Housing
5. Food services/kitchen
6. Library
7. Armory
8. Dining Hall
9. Health services
10. Rec Yard
11. Administration
12. School/classrooms
13. Vocational programs
14. Governor's House Program

CORRECTIONS

YANKTON MINIMUM CENTER



- **History:** Constructed in 1938; opened in early 1970's as minimum-security facility
- **Custody:** Houses male, minimum custody offenders on the campus at the Human Service Center (HSC) in Yankton
- **Programs:** Community service, work release, chemical dependency, education
- **Cost:** \$2,226,298
- **Staffing:** 27 FTE (Insufficient staffing pattern)
- **Inmate Population:** 265

YANKTON MINIMUM CENTER



1. Housing unit

CORRECTIONS

RAPID CITY MINIMUM CENTER



- **History:** Building was acquired in 2000 and repurposed from a commercial warehouse to minimum facility; opened in 2010
- **Custody:** Houses male, minimum custody offenders in Rapid City
- **Programs:** Community service, work release, chemical dependency, education
- **Cost:** \$3,299,380
- **Staffing:** 28 FTE (Insufficient staffing pattern)
- **Inmate Population:** 285

RAPID CITY MINIMUM CENTER



1. Housing unit

CORRECTIONS

SOUTH DAKOTA WOMEN'S PRISON



- **History:** Opened in 1995 as a multi-agency Solem Public Safety Center, including DOC Administration
- **Custody:** Houses female, low-medium through maximum custody levels of offenders in Pierre
- **Programs:** Education, chemical dependency, mother/infant program, prison industries
- **Cost:** \$5,508,493
- **Staffing:** 51 FTE (Significantly understaffed staffing pattern)
- **Inmate Population:** 214

SDWP UNIT E



- **History:** Unit E was added to the SDWP campus in 1999 as an annex to the main facility to provide dormitory style housing
- **Custody:** Houses female, low-medium and minimum custody levels of offenders on the campus of SDWP in Pierre
- **Programs:** Shares services with SDWP
- **Cost:** \$816,904
- **Staffing:** 8 FTE (Insufficient staffing pattern)
- **Inmate Population:** 92

PIERRE MINIMUM CENTER



- **History:** Building was donated in 2013 to the SDWP campus; previously a crime lab and training facility for the highway patrol which was vacated due to structural issues.
- **Custody:** Houses female, minimum custody levels of offenders on the campus of SDWP in Pierre
- **Programs:** Work release, prison industries, education, chemical dependency treatment
- **Cost:** \$1,580,626
- **Staffing:** 16 FTE (Insufficient staffing pattern)

SOUTH DAKOTA WOMEN'S PRISON



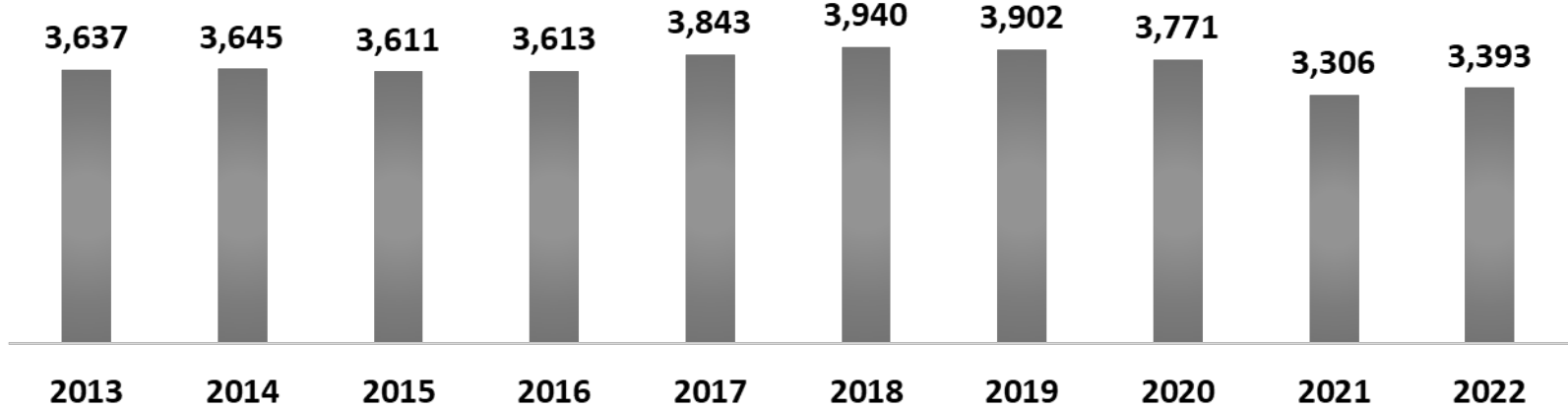
1. SDWP Housing
2. Mother/Baby Unit
3. Unit E Housing
4. Administration
5. Minimum Center Housing
6. Classrooms, industries, and programs
7. Maintenance Building

POPULATION TRENDS

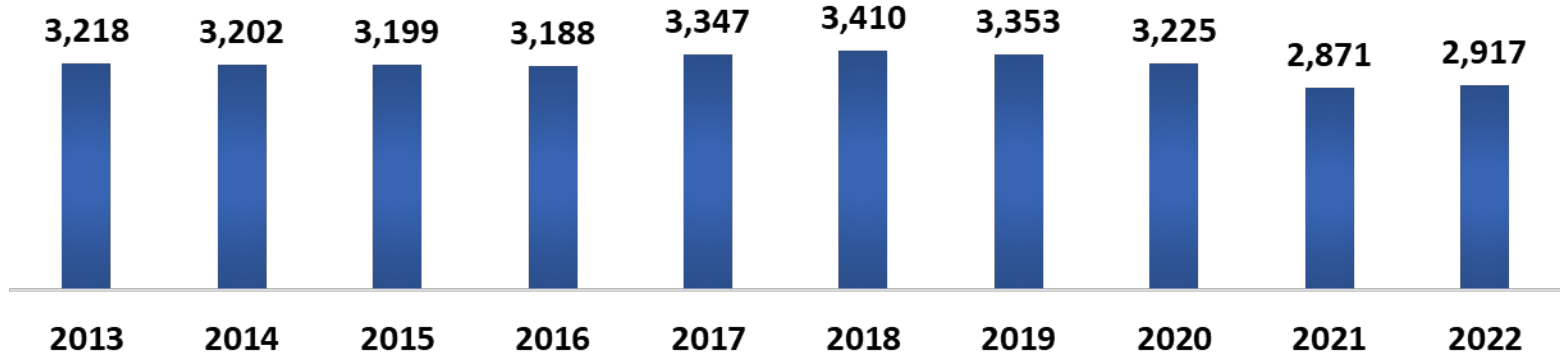


AVERAGE DAILY PRISON POPULATION

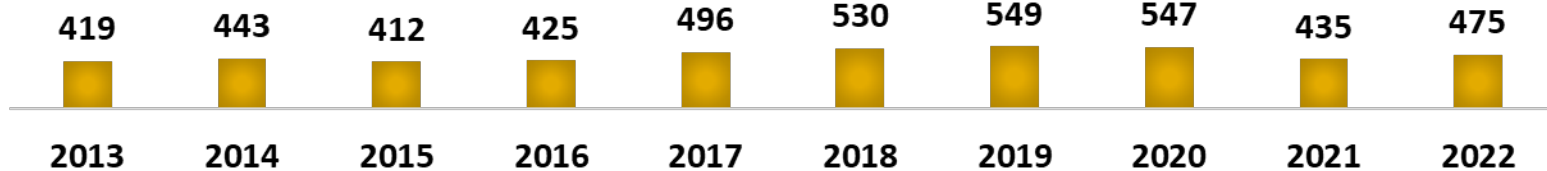
Total



Male



Female

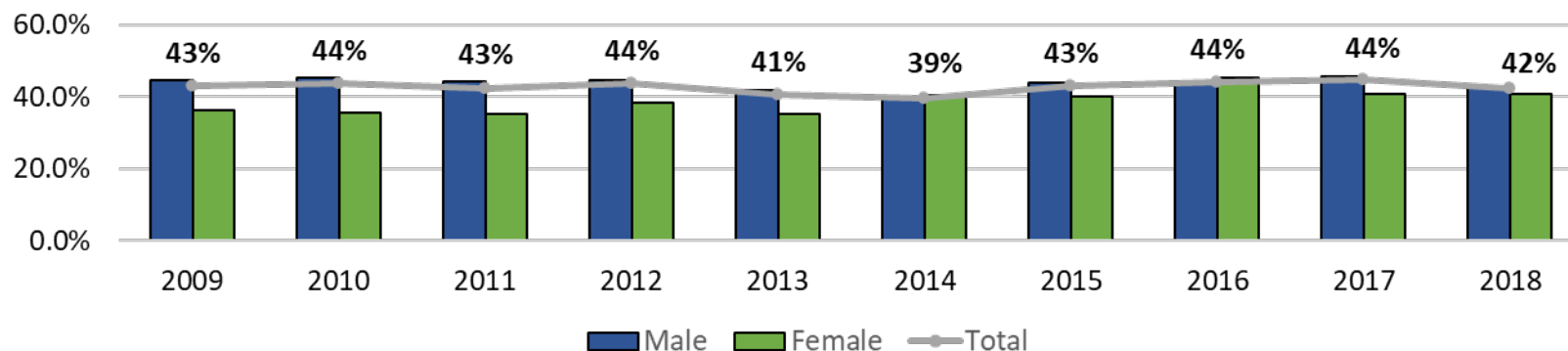


CORRECTIONS

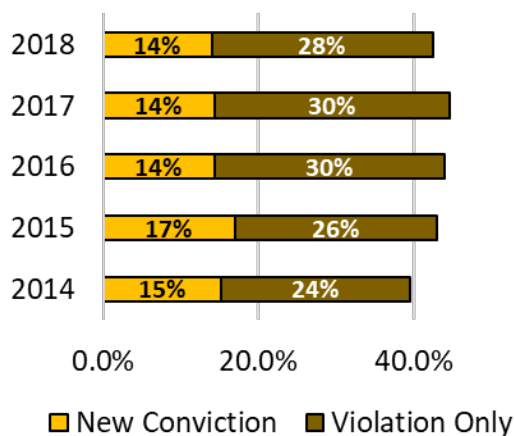
RECIDIVISM



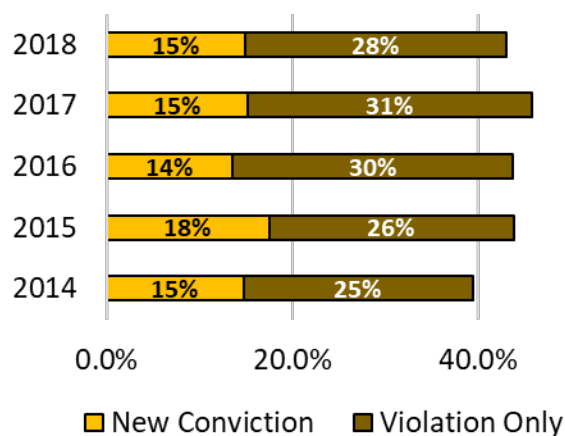
- Adult recidivism looks at the offender's status **three-years** from their release from prison to supervision or discharge status.
- Recidivists include any admissions to prison for a **new felony conviction** or for a **violation** of parole or suspended sentence supervision.



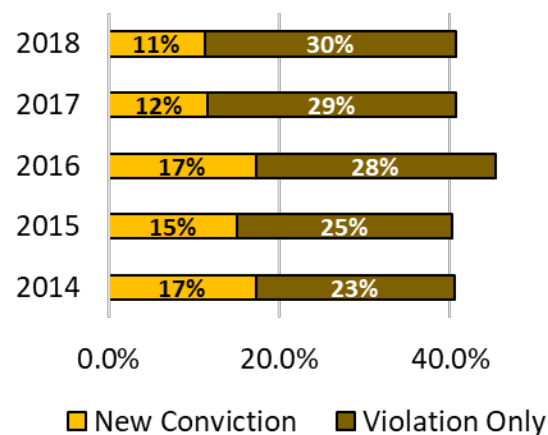
Total by Type



Male by Type



Female by Type



RECOMMENDATIONS



DLR GROUP RECOMMENDATIONS

The following matrix indicates the impact of each of the previously identified projects and, specifically how they address the issues identified in Section 5 of this report.

#	Project Title	General Issues Addressed											*Est. Proj. Budget
		Reduce Inmate Density	Staffing / Operational Efficiencies	Specialty Population Accommodations	Inmate Integration / Connectivity	Deconcentrate Inmate Populations	Support Services Space Efficiency	Programs / Recreation Space	Administration / Staff Space Efficiency	Facility Infrastructure Efficiency	Address Codes and Standards Issues	Reduce Security Risks / Contraband	
1.A	Construct a new 1,372-bed Multi-Custody Correctional Facility	✓	✓	✓	✓	✓	✓	✓	✓	✓	✓	✓	\$ 338,537,475
2.A	Intake Remodel at the Jameson Annex		✓			✓		✓	✓		✓		\$ 2,846,999
2.B	Infill Courtyard with Gym and Programs at the Jameson Annex					✓	✓	✓					\$ 3,149,365
2.C	Re-Purpose vacated Medical Space at the Jameson Annex					✓	✓	✓					\$ 1,584,899
4.A	Construct a new 100-bed Female Community Work Center in Sioux Falls	✓			✓	✓	✓	✓					\$ 23,012,028
4.B	Construct a new 300-bed Male Community Work Center on the existing State Penitentiary Complex	✓			✓		✓	✓			✓		\$ 37,760,552
5.A	Construct a new 200-bed Male Community Work Center on the grounds of the Human Services Center in Yankton	✓	✓	✓			✓	✓	✓		✓	✓	\$ 28,012,008
5.B	Remodel/Expansion of the existing Male Community Work Center on the grounds of the Human Services Center in Yankton	✓	✓				✓	✓	✓		✓	✓	\$ 13,248,688
6.A	Construct a new Kitchen at the Mike Durfee State Prison	✓	✓				✓			✓		✓	\$ 8,128,530
6.B	Construct a new 300-bed Male Low-Medium Housing Unit at the Mike Durfee State Prison	✓	✓	✓					✓	✓		✓	\$ 43,373,802
7.A	Demolish existing Community Work Center/Training Building at the Women's Prison								✓	✓		✓	\$ 802,466
7.B	Remodel Unit 'E' for the Community Work Center at the Women's Prison	✓					✓			✓			\$ 1,373,239
7.C	Construct a new 250-bed Female Minimum-Security Unit at the Women's Prison	✓		✓	✓		✓	✓			✓		\$ 41,055,769
7.D	Re-purpose the Women's Center for Opportunity for Maintenance and Training at the Women's Prison							✓	✓				\$ 2,871,559
7.E	Expand the Medical Component at the Women's Prison		✓	✓			✓		✓				\$ 1,065,180
8.A	Construct a new 100-bed Female Community Work Center in Rapid City	✓			✓	✓		✓					\$ 18,780,733
8.B	Construct a new 200-bed Male Low-Medium Security Unit at the Rapid City Community Work Center	✓			✓			✓					\$ 41,522,609
8.C	Expand the existing Special Housing Unit from 2 to 6 cells at the Rapid City Community Work Center	✓	✓				✓						\$ 1,076,806
Total													\$ 608,202,707

CORRECTIONS

DOC FACILITY RECOMMENDATIONS

- Construct 200 bed female facility in Rapid City
 - SB 53 approved the land purchase and design
- Construct a male facility to replace the South Dakota State Penitentiary
- Place fences around the minimum centers in Yankton, Sioux Falls, and Rapid City.
 - Contracts in place for these projects
- Create one point of entry at each facility
 - Structure will be needed at SF Minimum Center/JPA
- Expand the medical services area at the SD Women's Prison
 - SB 33 approved funding for this project – construction to begin Fall 2023
 - ARPA funding application in progress

GAPS IN SERVICES

- Addiction Treatment
- Mental Health Treatment
- Community Re-Entry and Resources
- Staffing Analysis for SDWP, Yankton Minimum Center, and Rapid City Minimum Center indicate insufficient staffing patterns for population
- Training personnel

SOUTH DAKOTA DEPARTMENT OF CORRECTIONS



QUESTIONS?

