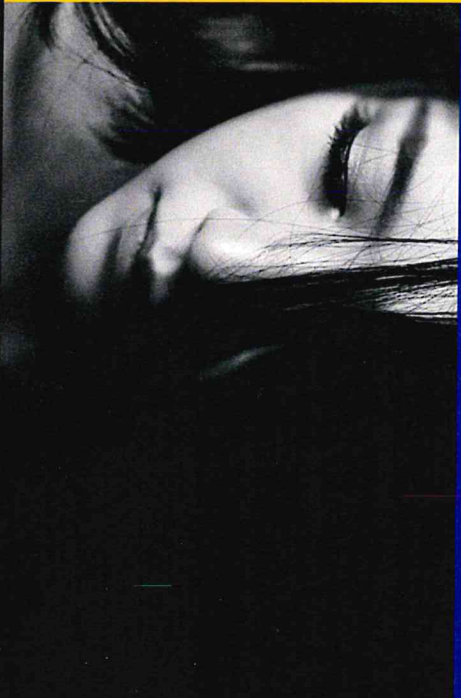
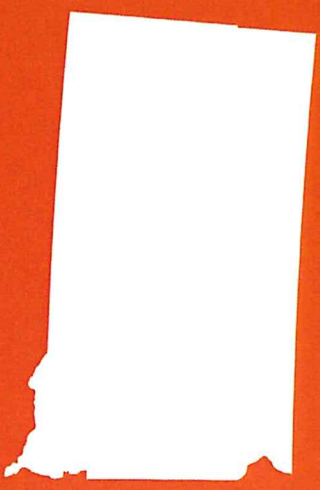




Victim's of Crime Act
VOCA

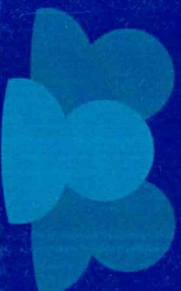


Essential in the
continuation and
advancement of Victim
Services in South Dakota



THE NEED

In 2020, **15,417** people reported to South Dakota victim service agencies requesting relief from abuse



THE PEOPLE

AGE	Number Impacted
0-12	5,203
13-17	1,267
18-24	1,374
25-59	6,532
60+	361
Unknown	671

THE SERVICES



Advocacy
91,101
+321% YOY



Protection Order Assistance
2,304
+4,800% YOY



Financial Assistance
11,406
+7% YOY



Hotline Calls
11,827
+45% YOY




Shelter Nights
98,760
+62% YOY

	Domestic Violence	Sexual Assault	Trafficking	Stalking	Children Impacted by DV	
						TOTAL
2016	5,460	526	N/A	149	3,141	9,276
2017	4,957	627	N/A	202	2,937	8,723
2018	5,243	528	N/A	178	2,736	8,685
2019	4,629	590	4	127	2,689	8,039
2020	7,921	2,768	189	258	2,134	13,270

PEOPLE ASSISTED BY VOCA FUNDING

	Shelter Nights	Advocacy*	Protection Order Assistance*	Financial Assistance*	Hotline Calls*
2016	74,079	52,476	N/A	12,744	10,743
2017	68,881	33,366	N/A	13,441	8,638
2018	75,399	34,648	N/A	14,895	10,356
2019	61,056	28,367	48	10,693	8,182
2020	98,760	91,101	2,304	11,486	11,827

VOCA FUNDED VICTIM SERVICES



Implications of VOCA FUNDING CUTS FOR SERVICE PROVIDERS

The cuts from VOCA have affected our agency by cutting our personnel, which affects our direct service. We have had to cut our Occupational therapist hours in half and as well as cut a part time advocate position. VOCA also has also impacted counseling and legal services, our community prevention services and resources as well as any extra programs we hoped to provide to our survivors.

-Shelter Executive Director


The timing of this cut is devastating. We count on about 46% of our total budget coming from VOCA Grant funds.

We are hoping and praying that we can do some fundraising later this year but there are no promises that the virus will not flare up and we will have to cancel once again. The survivors are still coming to our shelters and our programs. If we have to cut services because of VOCA cuts, would you suggest we cut food or transportation or support groups, or staff to care for our victims? Or should we not pay the utilities in our shelters? Where do WE make the cuts?

- Shelter Executive Director

The VOCA cuts will impact our ability to maintain the facility and needs for our clients.

- Shelter Executive Director



Implications of VOCA FUNDING CUTS FOR SERVICE PROVIDERS

The shelter will review staffing in January, but as of today, we will not have the funds needed to maintain our current staff due to the VOCA cuts. We may have to reduce our direct client services staff by 25% in March. Also, if the VOCA funds are not increased for 2023, we may have to reduce staff again by 25% in July as we cannot continue to operate in the negative. We are trying to reduce other expenses to maintain staff, but with other expenses increased (fuel, electricity, etc.), it's been very difficult.


- Shelter Executive Director

Because we cannot hire additional program staff due to VOCA funding cuts, our current staff, per National guidelines, can only supervise 30 volunteers working on 45 cases. We have two full-time staff members who manage volunteers, meaning 60 volunteers and 90 cases. We have 60 volunteers who have helped 110 children on 58 cases. With these numbers, we will soon have a waiting list. We have not had a waiting list in years, and the only way to prevent this is by hiring/training additional staff members.

-Court Program Director

We are already stretched thin and are getting by to the best of our abilities, especially since our numbers are up substantially over the last two years. Our small community needs our shelter and our services. If VOCA should choose to cut our funding even further, I'm not sure what that would mean for our future.

- Shelter Executive Director



Implications of VOCA FUNDING CUTS FOR SERVICE PROVIDERS

Without adding additional staff, we cannot increase our caseload or children served simply because National mandates state that a full-time employee can only oversee 30 active volunteers or a maximum of 45 cases. From 2020 - 2021 the number of children needing a CASA volunteer increased by 22.449 percent. We currently have two full-time staff that manage volunteers & cases. We have 60 volunteers, so without additional staff, we cannot serve and offer hope to more children who have been abused and neglected.

- Court Program Director

We cannot continue to lose funding at a time when fundraising is still affected by the COVID 19 pandemic. We were able to hold only 1 fundraiser of the usual 4 in 2021. The combination of these two issues is REALLY very difficult for us to maintain staff and services as other prices are now increasing. Our fuel for transportation, for example, has already increased since November of 2021 and that will greatly affect the funds available going forward. We were reduced in funding by 52% in VOCA cuts and that is just an insurmountable reduction at this time. If the cuts continue, we will also need to look at services offerings and may need to cut staff again and reduce coverage time in the

evenings to offset this reduction.


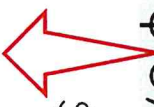
- Shelter Executive Director

We would be restricted on the ability to expand services to meet the unmet needs in our communities. Our training and development could be greatly impacted which is required as by our accreditation standards. Some trainings could not be conducted if the funds are not available to support travel and mileage in delivering those trainings.

- Advocacy & Prevention Program Director

South Dakota

VCCA AWARD HISTORY

2018 AWARD	2019 AWARD	2020 AWARD	2021 AWARD
\$ 9,213,724.00	\$ 6,524,592.00	\$ 4,978,035.00	\$ 3,364,009.00
	 \$2,689,132.00	 \$1,546,557.00	 \$1,614,026.00

STATE		2020 VOCA AWARD	2021 VOCA AWARD
South Dakota	\$	4,978,035.00	3,364,009.00
North Dakota	\$	4,367,738.00	2,992,097.00
Nebraska	\$	10,066,513.00	6,702,943.00
Iowa	\$	16,103,233.00	10,627,929.00
Minnesota	\$	28,390,503.00	18,611,603.00
Montana	\$	5,785,585.00	3,959,395.00
Wyoming	\$	3,362,222.00	2,364,284.00

Neighboring State Award Comparisons

SOUTH DAKOTA VOCA FUNDING CUTS

The Impact By Agency

Victim Service Provider	VOCA Award 2021	VOCA Award 2022	LOSS
7TH CIRCUIT COURT CASA PROGRAM	\$ 56,600.00	\$ 37,869.33	\$ 18,730.67
AVERA ST MARYS	\$ 47,000.00	\$ 32,752.00	\$ 14,248.00
BEACON CENTER	\$ 500,973.87	\$ 463,384.46	\$ 37,589.41
BRIDGES AGAINST DOMESTIC	\$ 67,910.80	\$ 54,407.49	\$ 13,503.31
BROOKINGS DOMESTIC ABUSE SHELTER	\$ 188,517.50	\$ 97,975.10	\$ 90,542.40
CALL TO FREEDOM INC	\$ 939,609.75	\$ 757,450.30	\$ 182,159.45
CASA FIRST CIRCUIT	\$ 210,695.00	\$ 168,700.00	\$ 41,995.00
CATHOLIC FAMILY SERVICES - Rapid City	\$ 41,000.00	\$ 20,541.00	\$ 20,459.00
CATHOLIC FAMILY SERVICES - Sioux Falls	\$ 40,000.00	\$ 28,220.00	\$ 11,780.00
CHILDREN'S INN	\$ 532,380.00	\$ 393,894.17	\$ 138,485.83
CHILDREN'S HOME SOCIETY OF SD	\$ 278,945.00	\$ 229,048.00	\$ 49,897.00

SOUTH DAKOTA VOCA FUNDING CUTS

The Impact By Agency

Victim Service Provider	VOCA Award 2021	VOCA Award 2022	LOSS
COMMUNITIES AGAINST VIOLENCE	\$ 44,400.00	\$ 31,630.00	\$ 12,770.00
CRISIS INTERVENTION SHLTR SVC	\$ 302,684.00	\$ 244,118.00	\$ 58,566.00
DOMESTIC VIOLENCE NETWORK INC	\$ 92,787.00	\$ 77,320.00	\$ 15,467.00
DOMESTIC VIOLENCE SAFE OPTION	\$ 66,321.00	\$ 57,734.00	\$ 8,587.00
EAST CENTRAL CASA	\$ 86,275.00	\$ 68,458.00	\$ 17,817.00
EAST RIVER LEGAL SERVICES	\$ 1,047,552.00	\$ 611,861.00	\$ 435,691.00
FAMILY CRISIS CENTER	\$ 102,603.00	\$ 73,829.00	\$ 28,774.00
JAN MANOLIS FAMILY SAFE CENTER	\$ 64,000.00	\$ 56,234.00	\$ 7,766.00
LUTHERAN SOCIAL SERVICES OF SD	\$ 93,429.00	\$ 67,268.00	\$ 26,161.00
MISSOURI SHORES DOMESTIC	\$ 173,522.00	\$ 124,041.00	\$ 49,481.00
MISSOURI VALLEY CRISIS CENTER	\$ 169,564.00	\$ 115,726.39	\$ 53,837.61

SOUTH DAKOTA VOCA FUNDING CUTS

The Impact By Agency

Victim Service Provider	VOCA Award 2021	VOCA Award 2022	LOSS
MITCHELL AREA SAFEHOUSE INC	\$ 132,561.00	\$ 64,504.00	\$ 68,057.00
NATIVE AMERICAN COMMUNITY BD	\$ 70,474.00	\$ 41,043.00	\$ 29,431.00
NORTHERN HILLS AREA CASA PROGRAM	\$ 86,088.00	\$ 75,794.00	\$ 10,294.00
ONE HEART	\$ 363,716.00	\$ 220,759.00	\$ 142,957.00
PENNINGTON COUNTY	\$ 99,624.00	\$ 60,957.00	\$ 38,667.00
RAPID CITY -- CITY OF	\$ 119,166.00	\$ 87,119.00	\$ 32,047.00
RIVER CITY DOMESTIC VIOLENCE CENTER	\$ 462,196.00	\$ 397,835.00	\$ 64,361.00
SACRED HEART CENTER	\$ 51,000.00	\$ 37,765.00	\$ 13,235.00
SAFE HARBOR	\$ 340,348.00	\$ 93,159.00	\$ 247,189.00
SIOUX FALLS AREA CASA PROGRAM	\$ 179,478.00	\$ 104,834.00	\$ 74,644.00
SOUTH DAKOTA NETWORK AGAINST FAMILY VIOLENCE AND SEXUAL ASSAULT	\$ 110,802.00	\$ 66,083.00	\$ 44,719.00

SOUTH DAKOTA VOCA FUNDING CUTS

The Impact By Agency

Victim Service Provider	VOCA Award 2021	VOCA Award 2022	LOSS
SOUTHEAST CASA PROGRAM	\$ 130,973.00	\$ 93,449.00	\$ 37,524.00
THE COMPASS CENTER	\$ 421,477.00	\$ 203,679.00	\$ 217,798.00
VICTIMS OF VIOLENCE	\$ 254,762.00	\$ 230,029.00	\$ 24,733.00
WACANGA INC	\$ 48,577.00	\$ 72,614.00	\$ 24,037.00
WELLSPRING INC	\$ 100,311.00	\$ 54,281.00	\$ 46,030.00
WHITE BUFFALO CALF WOMEN'S SOCIETY	\$ 361,791.00	\$ 216,420.00	\$ 145,371.00
WHOLENESS CENTER	\$ 44,378.00	\$ 36,714.00	\$ 7,664.00
WINNER RESOURCE CENTER FOR FAMILIES	\$ 115,960.00	\$ 92,756.00	\$ 23,204.00
WOMEN ESCAPING A VIOLENT ENVIRONMENT	\$ 156,500.00	\$ 127,991.00	\$ 28,509.00
YOUTH & FAMILY SERVICES INC	\$ 97,558.00	\$ 71,680.00	\$ 25,878.00

Prepared by The South Dakota Network Against Family Violence and Sexual Assault (SDNAFVSA)



About SDNAFVSA

- A state-level, non-profit agency comprised of 86-member agencies and individuals dealing with the concerns of domestic violence and sexual assault victims.
- Provides training and technical assistance to its member programs through quarterly meetings, training and annual conferences addressing the issues of domestic violence, sexual assault, dating violence and stalking.
- Involved in several projects related to domestic violence and sexual assault including but not limited to law enforcement training, sexual assault response team coordination, and services for rural and disabled victims and survivors.

SDNAFVSA Membership

- Aberdeen Police Department
- Agape United Foundation
- Artemis House – Victims of Violence Intervention Program, Inc.
- Beacon Center
- Beadle County State's Attorney's Office
- Bridges Against Domestic Violence
- Brookings County State's Attorney's Office
- Brookings Domestic Abuse Shelter
- Brown County State's Attorney's Office
- Call to Freedom
- Center for the Prevention of Child Maltreatment
- Central South Dakota Child Assessment Center
- Children's Home Society – Child Advocacy Center
- Children's Inn
- Children's Advocacy Centers of South Dakota
- Child's Voice
- Clay County State's Attorney's Office
- Communication Service for the Deaf
- Communities Against Violence and Abuse
- Coteau des Prairies Health Care System
- Disability Rights South Dakota
- Domestic Violence Network

SDNAFVSA Membership

Continued

- Domestic Violence Safe Option Services
- East River Legal Services
- Ellsworth Sexual Assault Prevention & Response Office
- Fallout Shelter
- Fall River County/Oglala Lakota County State's Attorney's Office
- Family Crisis Center
- Family Visitation Center
- First Circuit CASA Program
- Flandreau Santee Sioux Tribe: Family Violence Prevention Program
- Great Plains Tribal Chairmen's Health Board
- Helpline Center
- I CARE
- Jan Manolis Family Safe Center
- LSS of South Dakota
- Maggie's House
- Meade County State's Attorney's Office
- Missouri Shores Domestic Violence Center
- Missouri Valley Crisis Center
- Mitchell Area Domestic Violence SART
- Mitchell Area Safehouse
- Monument Health Regional Hospital SART
- Native Women's Health Care
- Northern State University

SDNAFVSA Membership

Continued

- Local Individuals and Survivors
- Pennington County Sheriff's Office
- Pennington County State's Attorney's Office
- Resolutions Counseling & Meditation
- Restoring Hope
- River City Domestic Violence Center
- Sacred Heart Center Family Violence Services Program
- Safe Harbor
- Sioux Falls CASA
- South Dakota Division of Criminal Investigation
- South Dakota Highway Patrol Crash Assistance Program
- The Compass Center
- The Wholeness Center
- Treasured Lives
- Union County State's Attorney's Office
- Volunteers of America - Dakotas
- Wac'ang'a Inc
- Watertown Police Department
- Where All Women Are Honored
- White Buffalo Calf Women's Society, Inc.
- Wiconi Wawokiyá, Inc.
- Winner Resource Center for Families
- Working Against Violence, Inc. (WAVI)
- Yankton Police Department
- Youth and Family Services
- Zimbelman Evaluations

Contact SDNAFVSA

2520 E, River Ridge Pl Suite
200 Sioux Falls, SD 57103

(605) 731-0041



Together, we are
The Network.[™]