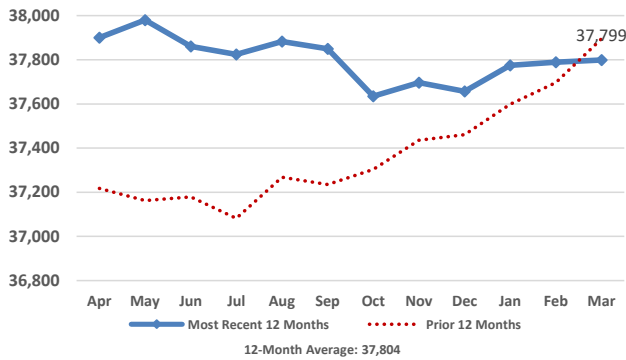


# Medical Services Data and Trends

March 2019



## Adult Medicaid Enrollment



## Monthly Enrollment Data

| Eligibility Category        | Enrollees      | Monthly Change | Yearly Change  |
|-----------------------------|----------------|----------------|----------------|
| Aged/Blind Adults           | 7,322          | 26             | 59             |
| Disabled Adults             | 16,389         | (65)           | (143)          |
| Pregnant Women              | 1,014          | 3              | 6              |
| Parents/Caretaker Relatives | 13,074         | 46             | (18)           |
| Medicaid Children           | 62,838         | (185)          | (1,700)        |
| CHIP Children               | 15,924         | (102)          | (293)          |
| <b>Total Enrollees</b>      | <b>116,561</b> | <b>(277)</b>   | <b>(2,089)</b> |

Children that moved from Medicaid to CHIP this month: 565  
Children that moved from CHIP to Medicaid this month: 581

## Monthly Expenditure Data

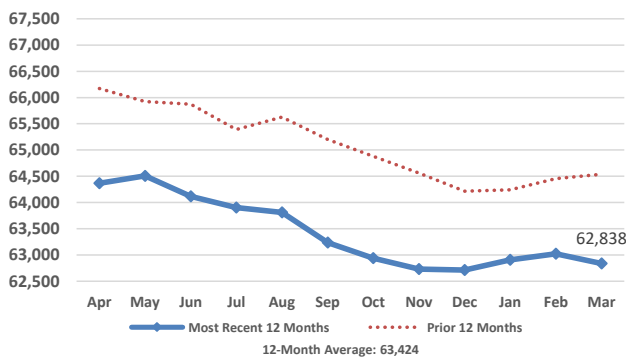
|                              | Medicaid     | CHIP        | Total        |
|------------------------------|--------------|-------------|--------------|
| Enrollees                    | 100,637      | 15,924      | 116,561      |
| Recipients*                  | 55,629       | 6,917       | 62,546       |
| Recipients as % of Enrollees | 55%          | 43%         | 54%          |
| Expenditures**               | \$66,467,259 | \$2,789,663 | \$69,256,922 |
| Expenditures per Enrollee    | \$660        | \$175       | \$594        |
| Expenditures per Recipient   | \$1,195      | \$403       | \$1,107      |

\* Recipient is an enrolled individual that had at least one medical service paid for during the month.  
\*\* Does not include premiums for Medicare Part A, Part B, and Part D.

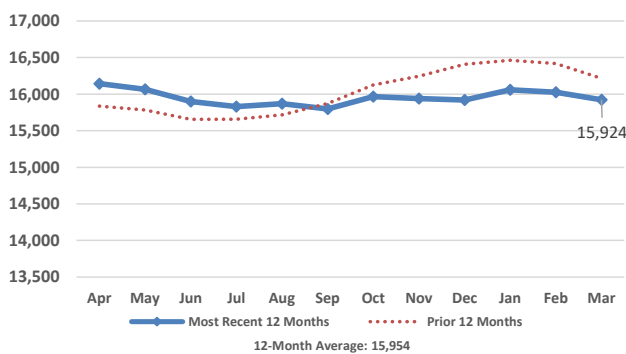
## Payments for Medicare Part A, B, & D Premiums

|                            | Part A    | Part B      | Part D      |
|----------------------------|-----------|-------------|-------------|
| Persons                    | 1,391     | 18,003      | 12,315      |
| Payment                    | \$586,899 | \$2,437,351 | \$1,792,239 |
| Average Payment per Person | \$422     | \$135       | \$146       |

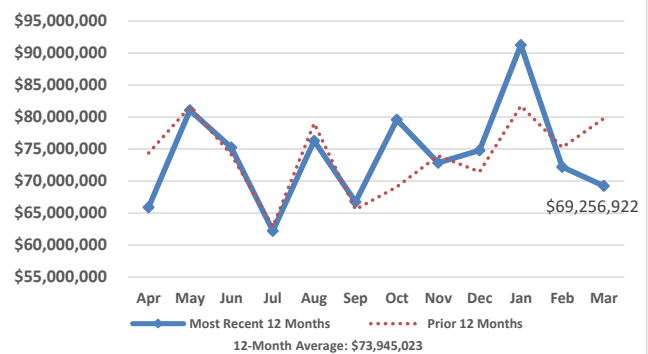
## Child Medicaid Enrollment



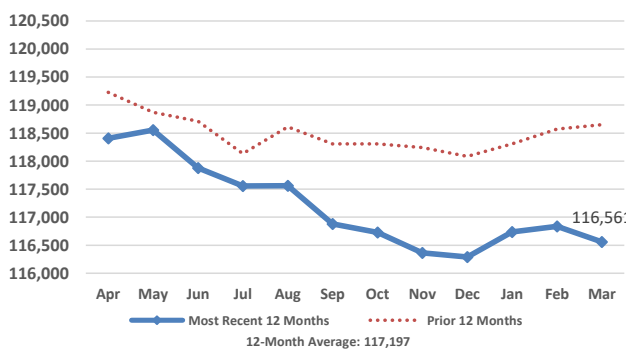
## CHIP Enrollment



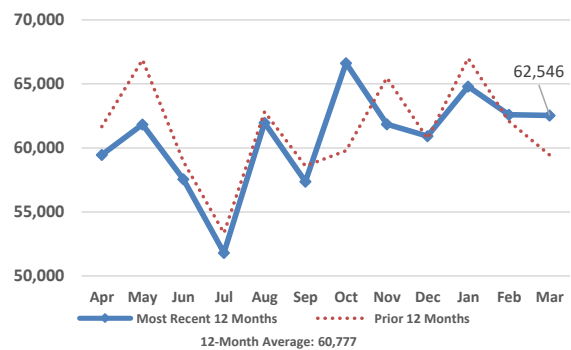
## Total Medical Services Expenditures



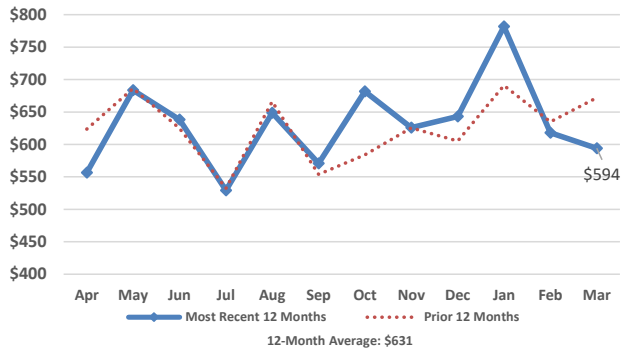
## Total Medical Services Enrollment



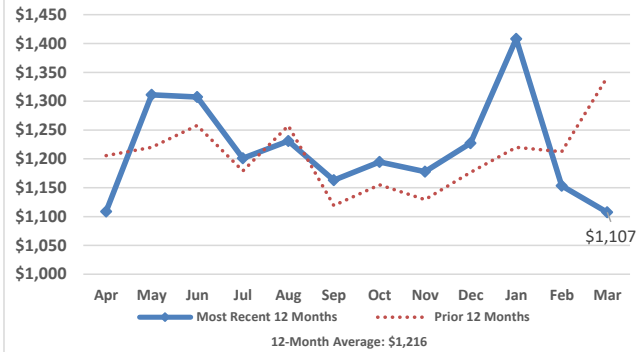
## Total Medical Services Recipients



### Total Expenditures per Enrollee



### Total Expenditures per Recipient



### Medicaid Budget

| SFY         | Enrollment | State         | Federal       | Total           |
|-------------|------------|---------------|---------------|-----------------|
| 2017 Actual | 104,049    | \$377,530,942 | \$524,267,061 | \$901,798,003   |
| 2018 Actual | 102,235    | \$371,580,450 | \$545,692,260 | \$917,272,710   |
| 2019 Budget | 103,484    | \$392,198,909 | \$656,849,925 | \$1,049,048,834 |

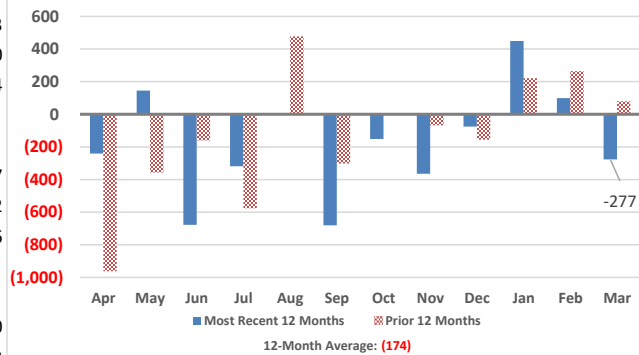
### CHIP Budget

| SFY         | Enrollment | State       | Federal      | Total        |
|-------------|------------|-------------|--------------|--------------|
| 2017 Actual | 15,570     | \$2,700,989 | \$27,441,048 | \$30,142,037 |
| 2018 Actual | 16,498     | \$2,718,769 | \$29,893,633 | \$32,612,402 |
| 2019 Budget | 15,936     | \$2,494,439 | \$30,588,307 | \$33,082,746 |

### Total Medical Services Budget

| SFY         | Enrollment | State         | Federal       | Total           |
|-------------|------------|---------------|---------------|-----------------|
| 2017 Actual | 119,619    | \$380,231,931 | \$551,708,109 | \$931,940,040   |
| 2018 Actual | 118,733    | \$374,299,219 | \$575,585,893 | \$949,885,112   |
| 2019 Budget | 119,420    | \$394,693,348 | \$687,438,232 | \$1,082,131,580 |

### Change in Medical Services Enrollees



### Federal Medical Assistance Percentage

|                     | SFY2017 | SFY2018 | SFY2019 | SFY2020 |
|---------------------|---------|---------|---------|---------|
| <b>Regular FMAP</b> |         |         |         |         |
| Federal             | 54.11%  | 55.24%  | 56.37%  | 57.39%  |
| State               | 45.89%  | 44.76%  | 43.63%  | 42.61%  |
| <b>CHIP FMAP</b>    |         |         |         |         |
| Federal             | 90.88%  | 91.67%  | 92.46%  | 84.55%  |
| State               | 9.12%   | 8.33%   | 7.54%   | 15.45%  |

### South Dakota Income Eligibility - Calendar Year 2019

| Family Size | Aged/Blind/Disabled (Single) |         | Aged/Blind/Disabled (Couple) |          | Pregnant Women | Child Medicaid | CHIP |
|-------------|------------------------------|---------|------------------------------|----------|----------------|----------------|------|
|             | %FPL: 40% - 59%              | 74%     | 83%                          | 138%     | 182%           | 209%           |      |
| 1           | \$7,380                      | \$9,492 | X                            | \$17,236 | \$22,732       | \$26,104       |      |
| 2           | \$9,276                      | X       | \$14,124                     | \$23,336 | \$30,776       | \$35,342       |      |
| 3           | \$10,620                     | X       | X                            | \$29,435 | \$38,821       | \$44,580       |      |
| 4           | \$11,904                     | X       | X                            | \$35,535 | \$46,865       | \$53,818       |      |
| 5           | \$13,236                     | X       | X                            | \$41,635 | \$54,909       | \$63,055       |      |
| 6           | \$14,568                     | X       | X                            | \$47,734 | \$62,954       | \$72,293       |      |
| 7           | \$15,876                     | X       | X                            | \$53,834 | \$70,998       | \$81,531       |      |
| 8           | \$17,160                     | X       | X                            | \$59,933 | \$79,043       | \$90,769       |      |

### Medical Services Expenditures and Enrollees

